

Reserved for County Recorder's use.



Doc ID: 011992650001 Type: GEN
Recorded: 08/16/2023 at 09:12:12 AM
Fee Amt: \$7.00 Page 1 of 1
Black Hawk County Iowa
SANDIE L. SMITH RECORDER

File **2024-00002270**

Jeffrey P. Helland, 6109 Chancellor Drive, Cedar Falls, Iowa 50613-6916, (319)-266-0161

UNITED STATES PUBLIC LAND SURVEY CORNER CERTIFICATE
OF

LAND SURVEY MONUMENTS SITUATED IN SECTION NO. 17, TOWNSHIP NO. 88 NORTH, RANGE
NO. 11 WEST OF THE FIFTH PRINCIPAL MERIDIAN, BLACK HAWK COUNTY, IOWA.
PREVIOUSLY RECORDED IN #2016-00006978

(SHOW REASON FOR PREPARING THIS CERTIFICATE, THE EVIDENCE AND DETAILED PROCEDURES USED IN ESTABLISHING THE
CORNER POSITIONS AND MONUMENTATION FOUND OR PLACED.)

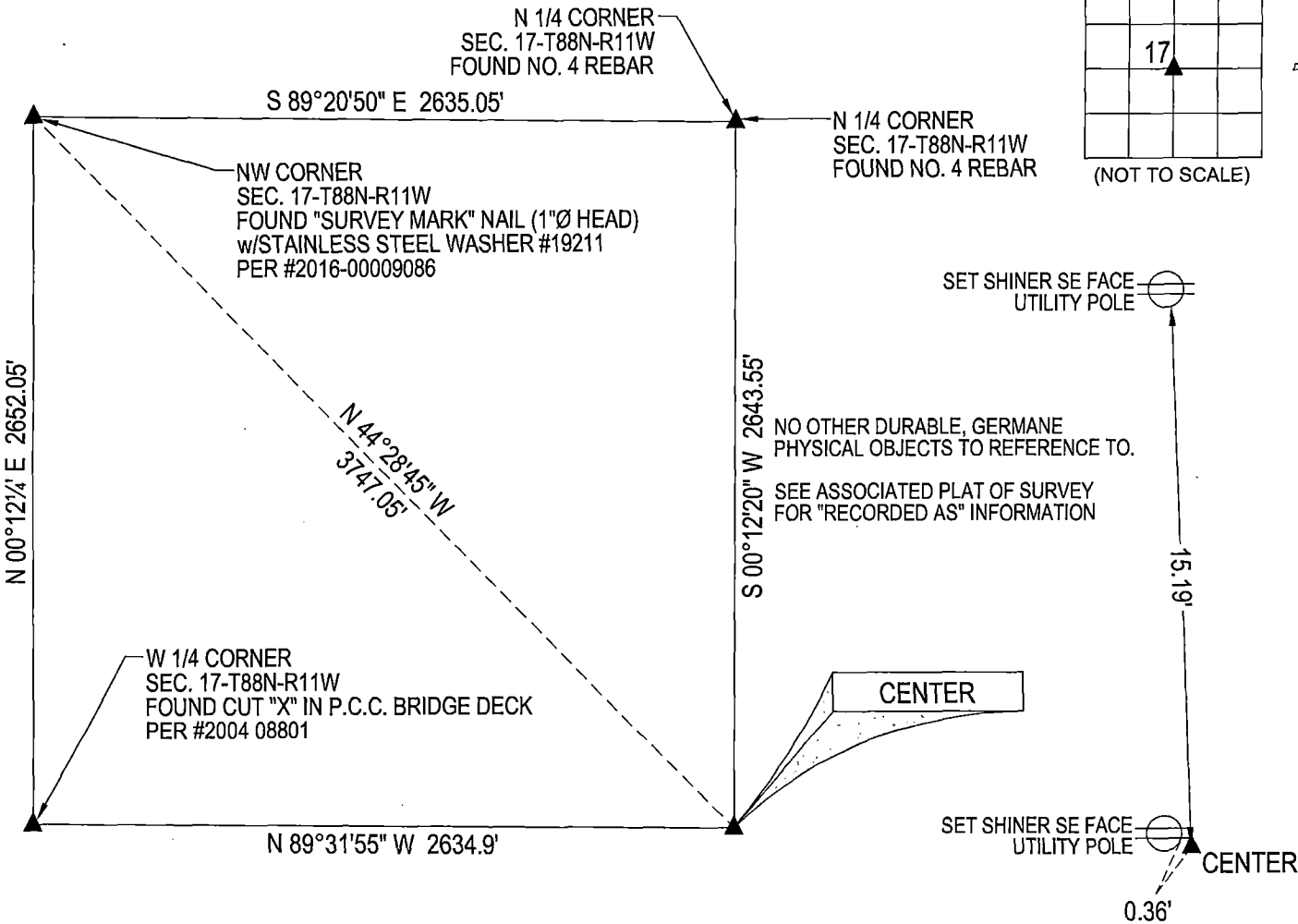
MONUMENT DESCRIPTION AND REMARKS:

MONUMENTATION AND REFERENCE TIES HAVE CHANGED. SURVEY COMPLETED IN THE NW OF SEC. 17-T88N-R11W.

→ **CENTER:** USPLSCC RECORDED IN #2016-00006978 DATED 10/08/2015 CALLS FOR [SET NO. 4 REBAR (24" LONG)
w/MAROON PLASTIC CAP #21096 ON LINE BETWEEN THE N 1/4 CORNER AND THE S 1/4 CORNER & ONLINE BETWEEN THE
W 1/4 CORNER AND THE E 1/4 CORNER. CORNER FALLS IN EAST-WEST FENCE.] SEARCH AREA w/METAL DETECTOR
AND FOUND NO. 4 REBAR DISTURBED BY INSTALLATION OF NEW UTILITY POLE 0.4'± DEEP. SET NO. 4 REBAR (2' LONG)
w/OPC #16264 AT THE DISTANCE-DISTANCE INTERSECTION FROM THE N 1/4 CORNER AND THE W 1/4 CORNER PER
USPLSCC #2016-00006978 AND UTILIZED AS CORNER.

PLAN VIEW

(SHOW A MINIMUM OF THREE REFERENCE TIES TO DURABLE PHYSICAL OBJECTS, RELEVANT MONUMENTS AND PHYSICAL
CONDITIONS THAT WILL ENABLE RECOVERY OF THE CORNER.)

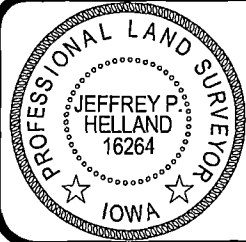


(BEARINGS ARE ASSUMED)



HELLAND ENGINEERING & SURVEYING, LTD.
6109 Chancellor Drive
Cedar Falls, Iowa 50613-6916
(319)-266-0161

SHINER = 4d. NAIL & 1 5/16"Ø METAL SHINER DRAWN BY: JPH
BRASS TAG = 4d. NAIL & 13/16"Ø BRASS TAG
OPC = PLASTIC CAP (O=ORANGE, R=RED, Y=YELLOW)
(00") RECORDED AS FILE NAME: 23-182-29.DWG



I hereby certify that this land surveying document was prepared
and the related survey work was performed by me or under my
direct personal supervision and that I am a duly licensed
Professional Land Surveyor under the laws of the State of Iowa.
Jeffrey P. Helland 8/15/2023
Jeffrey P. Helland
License Number 16264
My license renewal date is December 31, 2023.
All pages or sheets are covered by this seal except:

LIST CORNERS TO BE INDEXED		
CORNER	SECTION / TOWNSHIP / RANGE	
CENTER	17	88N 11W