

UNITED STATES PUBLIC LAND SURVEY CORNER CERTIFICATE OF

LAND SURVEY MONUMENTS SITUATED IN SECTION NO. 16, TOWNSHIP NO. 88 NORTH, RANGE
NO. 11 WEST OF THE FIFTH PRINCIPAL MERIDIAN, BLACK HAWK COUNTY, IOWA.

PREVIOUSLY RECORDED IN N/A

(SHOW REASON FOR PREPARING THIS CERTIFICATE, THE EVIDENCE AND DETAILED PROCEDURES USED IN ESTABLISHING THE CORNER POSITIONS AND MONUMENTATION FOUND OR PLACED.)
MONUMENT DESCRIPTION AND REMARKS:

W 1/4 CORNER:

BLACK HAWK COUNTY ENGINEER'S REFERENCE TIES SHOWS A SYMBOL FOR A **CONCRETE MONUMENT**. W.P.A. CHAINING NOTES DATED 7/10/39 CALL FOR "C.M.". FOUND CONCRETE MONUMENT w/BRASS CAP. SET NO. 4 REBAR (WITNESS MONUMENT) 0.3' TO THE SW.

SW CORNER:

BLACK HAWK COUNTY ENGINEER'S REFERENCE TIES SHOWS A SYMBOL FOR A **CONCRETE MONUMENT**. W.P.A. CHAINING NOTES DATED 5/11/39 CALL FOR "C.M.". PLAT OF SURVEY DATED 3/15/05 CALLS FOR "F. 2" G.P.". FOUND 80d. NAIL OVER GAS PIPE.

S 1/4 CORNER:

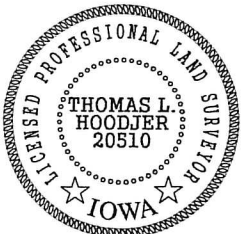
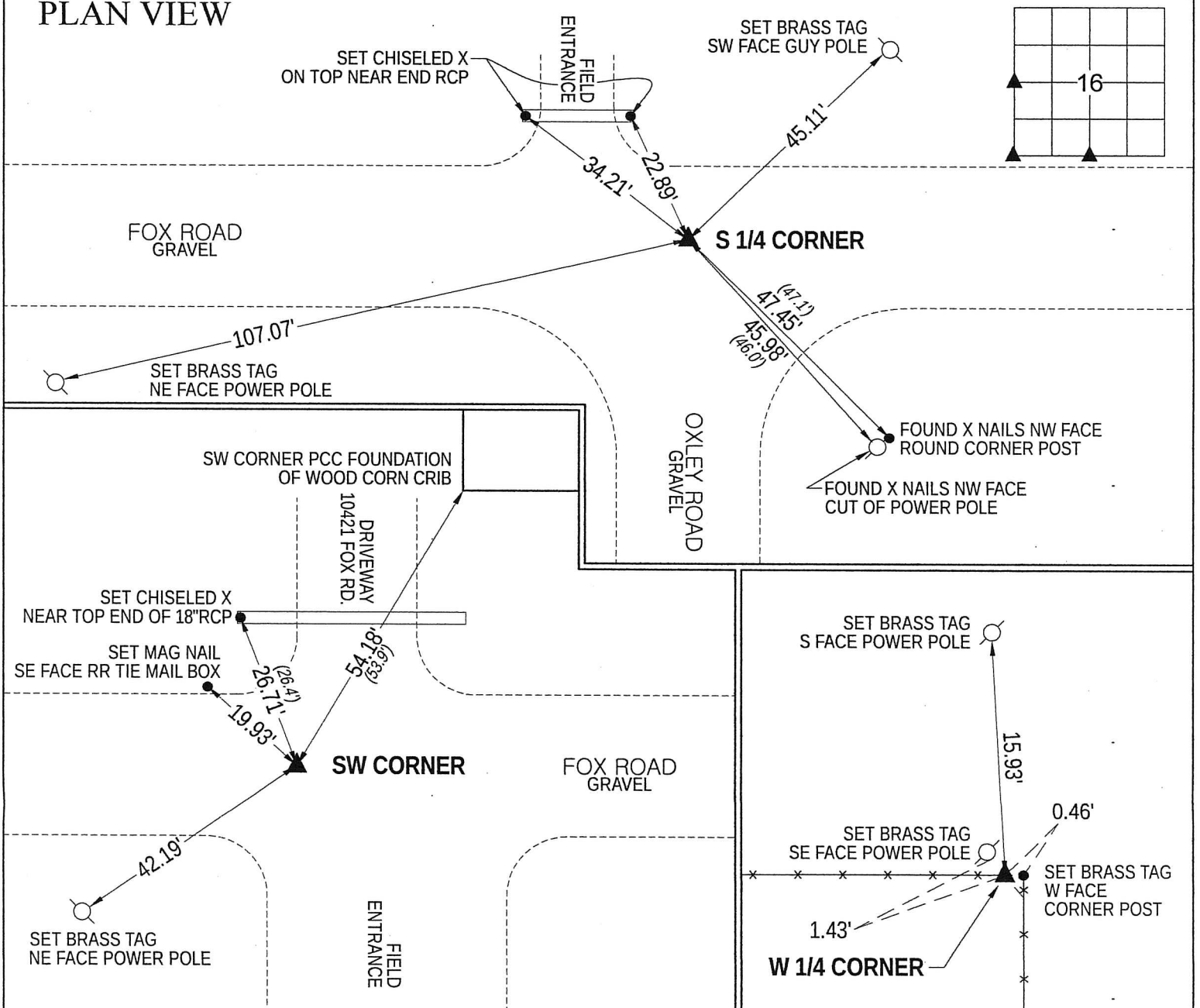
BLACK HAWK COUNTY ENGINEER'S REFERENCE TIES SHOWS A SYMBOL FOR A **CONCRETE MONUMENT**. W.P.A. CHAINING NOTES DATED 5/11/39 CALL FOR "C.M.". FOUND CONCRETE MONUMENT w/BRASS CAP 1.7' DEEP. SET NO. 4 REBAR (1.5' LONG) w/BUE PLASTIC CAP #20510 OVER SAID CONCRETE MONUMENT.

THIS USPLSCC IS BEING PREPARED FOR THESE CORNERS BECAUSE THERE ARE NO USPLSCC'S ON FILE.

PLEASE SEE PLAT OF SURVEY IN THE SW 1/4 16-88-11 FOR BEARINGS AND DISTANCES TO LOCAL SECTION CORNERS.

(SHOW A MINIMUM OF THREE REFERENCE TIES TO DURABLE PHYSICAL OBJECTS, RELEVANT MONUMENTS AND PHYSICAL CONDITIONS THAT WILL ENABLE RECOVERY OF THE CORNER.)

PLAN VIEW



I hereby certify that this land surveying document was prepared and the related survey work was performed by me or under my direct personal supervision and that I am a duly licensed Land Surveyor under the laws of the State of Iowa.

Thomas L. Hoodjer
THOMAS L. HOODJER
License Number 20510
My license renewal date is December 31, 2014.
All pages or sheets are covered by this seal except:

LIST CORNERS TO BE INDEXED
CORNER SEC-TWP-RNG

W 1/4	16-88-11
SW	16-88-11
S 1/4	16-88-11

