



Doc ID: 005499880001 Type: GEN
Kind: CORNER
Recorded: 06/18/2014 at 10:37:26 AM
Fee Amt: \$7.00 Page 1 of 1
Black Hawk County Iowa
JUDITH A MCCARTHY RECORDER

File 2014-00022452

Michael R. Fagle, P.L.S. AECOM, 501 Sycamore St., Suite 222, Waterloo, Iowa 50703 I-319-232-6531

UNITED STATES PUBLIC LAND SURVEY CORNER CERTIFICATE
OF

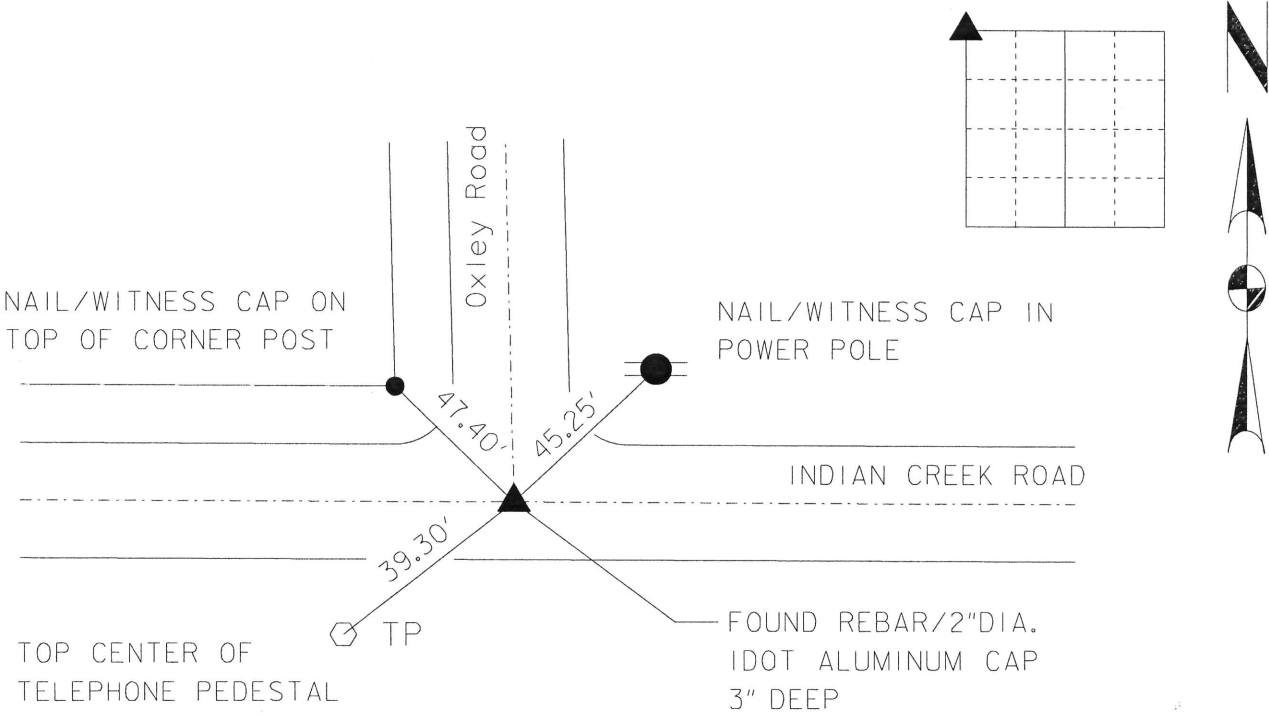
Land Survey Monuments situated in Section 16, Township 88 North,
Range 11 West, of the Fifth Principal Meridian, BLACK HAWK
County, Iowa. Previously recorded in IDOT Section Corner Tie Sheets U.S. Hwy. 20 Project
in County Recorder's Office. (Book, Page, Document Number, etc.)

(Show reason for preparing this certificate, the evidence and detailed procedures used in establishing the corner positions and monumentation found or placed.)

Monument Description and Remarks:
Found rebar with 2" dia. IDOT aluminum cap, 3" deep.

PLAN - VIEW

(Show a minimum of three reference ties to durable physical objects, relevant monuments and physical conditions that will enable recovery of the corner.)



ALL DEMENSION ARE MEASURED DIRECT

	<p>I hereby certify that this Land Surveying document was prepared by me or under my direct personal supervision and that I am a duly Licensed Land Surveyor under the laws of the State of Iowa.</p> <p><u>Michael R. Fagle</u> <u>6-18-2014</u> MICHAEL R. FAGLE Date</p> <p>License number 8505</p> <p>My license renewal date is December 31, 2014</p> <p>Pages or sheets covered by this seal: THIS SHEET</p>	<p>List Corners to be Indexed</p> <table><tr><th>Corners</th><th>Section</th><th>Twp</th><th>Range</th></tr><tr><td>Northwest</td><td>16</td><td>T 88 N</td><td>R 11 W</td></tr></table>	Corners	Section	Twp	Range	Northwest	16	T 88 N	R 11 W
Corners	Section	Twp	Range							
Northwest	16	T 88 N	R 11 W							