

PROOF *gm*

FILED FOR RECORD JUL 12, 2004, AT 3:00 P.M. FEE N/C

COMPARED *at**Atkins & Sons*

BLACK HAWK COUNTY RECORDER

BLACK HAWK COUNTY ENGINEER

PREPARED BY: BLACK HAWK COUNTY ENGINEERS OFFICE
316 E. FIFTH STREET, ROOM 211 WATERLOO, IOWA 50703PH.# (319) 833-3008
FAX# (319) 833-3139SLSI 9-94
CERT 12-96

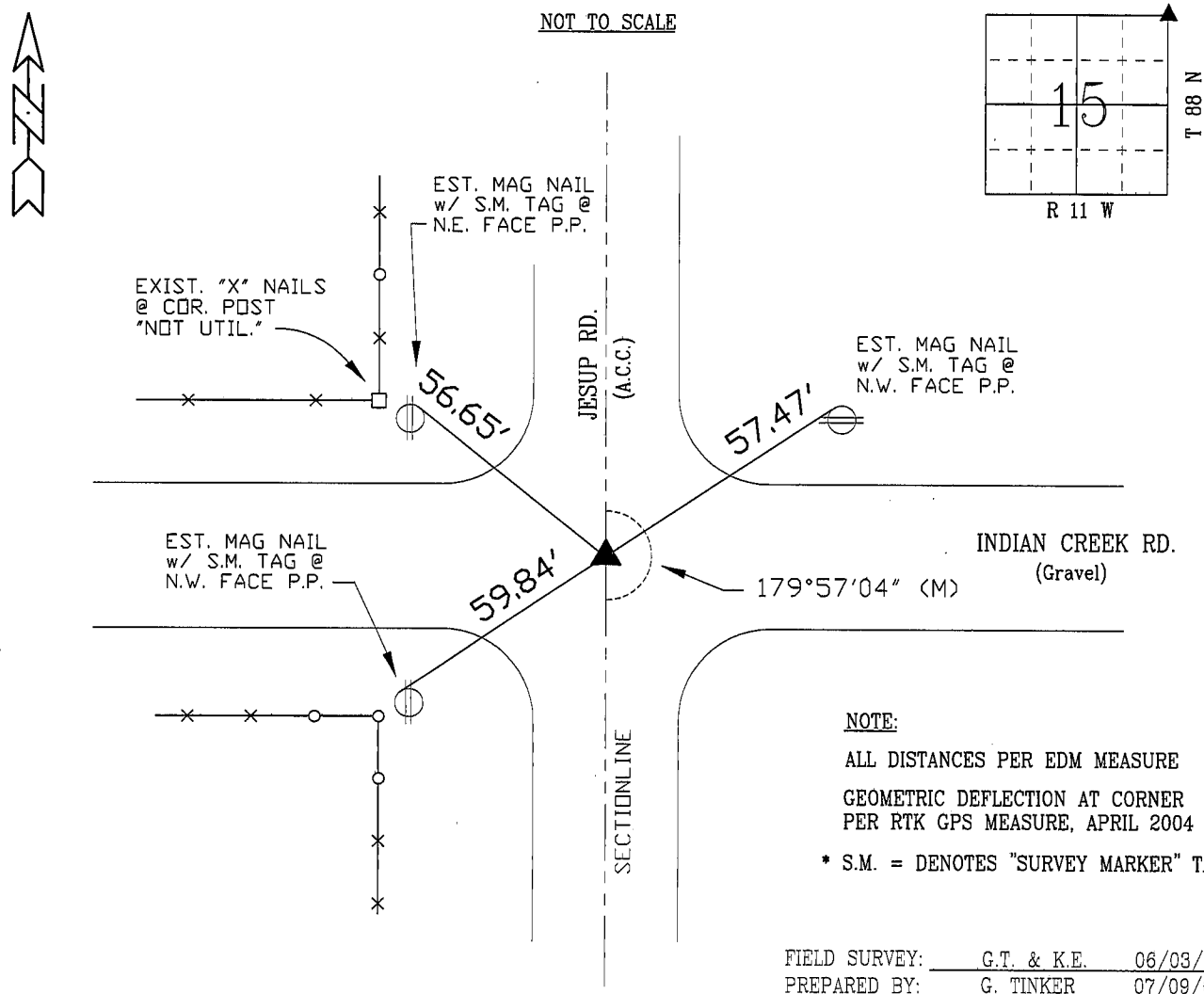
UNITED STATES PUBLIC LAND SURVEY CORNER CERTIFICATE OF
Land Survey Monuments situated in Section 15, Township 88 N,
Range 11 W, of the Fifth Principal Meridian, BLACK HAWK County, Iowa.
Previously recorded in Misc. Book 325, Page 262, in County Recorder's Office.

(Show reason for preparing this certificate, the evidence and detailed procedures used in establishing the corner positions and monumentation found or placed.)

Monument Description and Remarks: N.E. CORNER SECT. 15-88-11
FND. #4 RBR. PRIOR TO RESURFACING. PREV. RECORD TIES NOT UTIL. FOR
UPDATED RECORD DUE TO HEIGHT "+" OF RESURFACING. TEMP. REF. AND
UPDATED TIES AS DENOTED, AND RE-EST #5 REBAR x 5" L. FLUSH w/ ACC
@ C.L. INTERSECTION.
CORNER UPDATED DUE TO A.C.C. RESURFACING PROJECT, MAY 2004.

PLAN - VIEW

(Show a minimum of three reference ties to durable physical objects, relevant monuments and physical conditions that will enable recovery of the corner.)



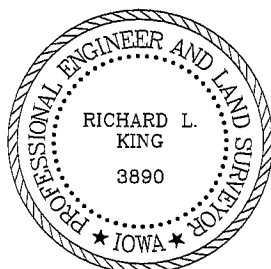
NOTE:

ALL DISTANCES PER EDM MEASURE
GEOMETRIC DEFLECTION AT CORNER
PER RTK GPS MEASURE, APRIL 2004

* S.M. = DENOTES "SURVEY MARKER" TAG

FIELD SURVEY: G.T. & K.E. 06/03/04
PREPARED BY: G. TINKER 07/09/04

CERTIFICATION



I hereby certify that this land surveying document was prepared and the related survey work was performed by me or under my direct personal supervision and that I am a duly licensed Land Surveyor under the laws of the State of Iowa.

Richard L. King *7/9/04*
Richard L. King (date)

License Number 3890

My license renewal date is December 31, 2005

Pages or sheets covered by this seal:

This Land Corner Certificate Only.

LIST CORNERS TO BE INDEXED

| Corner | Section | Township | Range |
|-----------|---------|----------|-------|
| N.E. COR. | 15 | 88 N | 11 W |
| N.W. COR. | 14 | 88 N | 11 W |
| S.E. COR. | 10 | 88 N | 11 W |
| S.W. COR. | 9 | 88 N | 11 W |