

Jeffrey P. Helland, 1107 Technology Parkway, Cedar Falls, Iowa 50613-6951, (319)-266-0161

# UNITED STATES PUBLIC LAND SURVEY CORNER CERTIFICATE OF

LAND SURVEY MONUMENTS SITUATED IN SECTION NO. 15, TOWNSHIP NO. 88 NORTH, RANGE  
NO. 11 WEST OF THE FIFTH PRINCIPAL MERIDIAN, BLACK HAWK COUNTY, IOWA.  
PREVIOUSLY RECORDED IN N/A

(SHOW REASON FOR PREPARING THIS CERTIFICATE, THE EVIDENCE AND DETAILED PROCEDURES USED IN ESTABLISHING THE  
CORNER POSITIONS AND MONUMENTATION FOUND OR PLACED.)

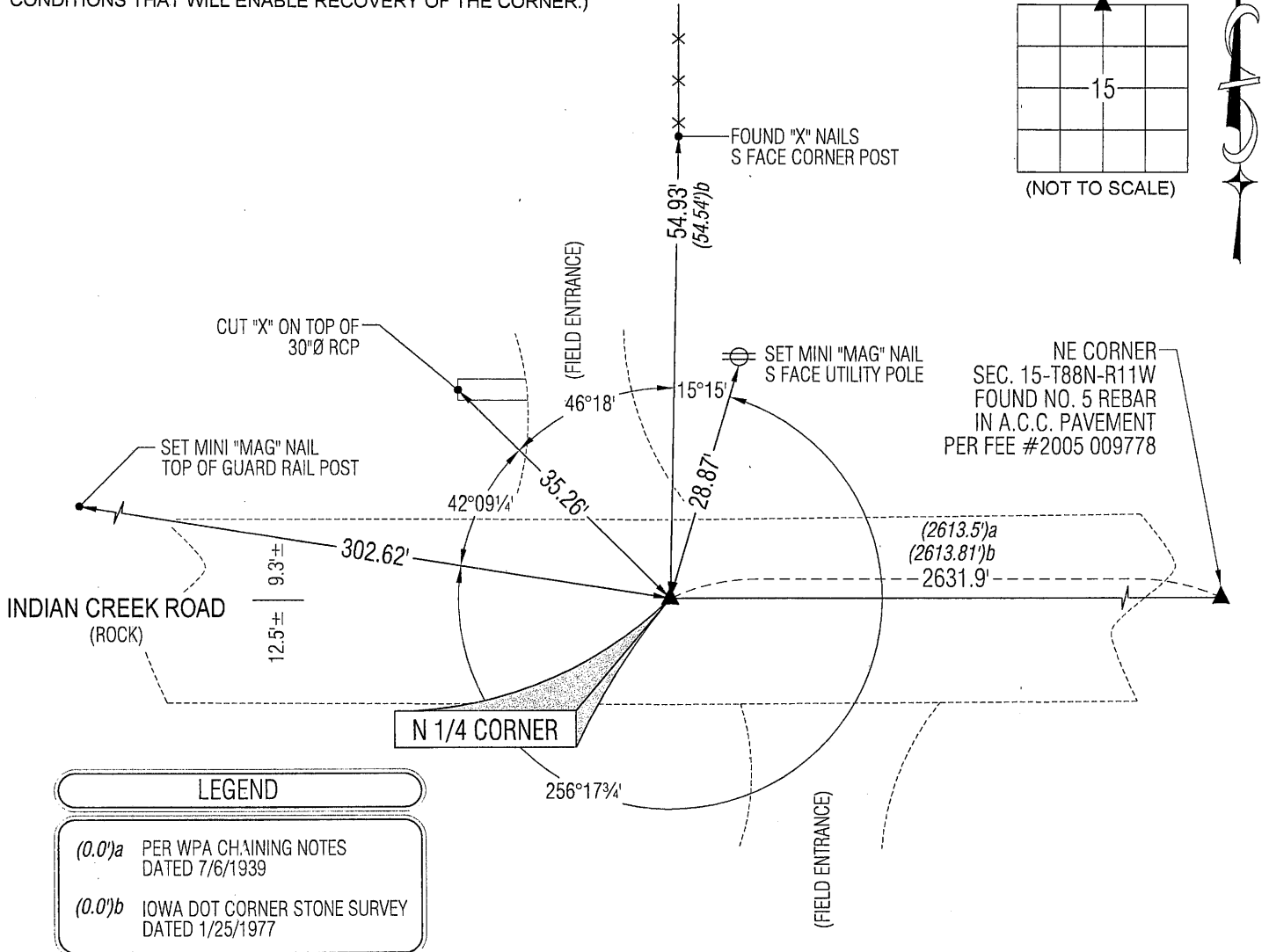
## MONUMENT DESCRIPTION AND REMARKS:

NO USPLSCC ON FILE. SURVEY COMPLETED IN THE NE 1/4 OF SEC. 15-T88N-R11W.

→ **N 1/4 CORNER:** WPA CHAINING NOTES DATED 7/6/1939 CALLS FOR [FOUND: IRON BAR 1/2" x 24" LONG AND 40 PY SPIKE.  
LOWERED EVIDENCE AND SET C.M. ON TOP 12" DEEP.]. BLACK HAWK COUNTY ENGINEER'S TIES DATED 6/15/1944 CALLS  
FOR [STANDARD CONCRETE MONUMENT]. IOWA DOT CORNER STONE SURVEY DATED 1/25/1977 CALLS FOR [FOUND STD.  
CONC. MON.]. FOUND STANDARD CONCRETE MONUMENT WITH BRASS CAP & STRONG MAGNETIC SOUNDING ON NORTH  
SIDE OF MONUMENT 0.3' DEEP.

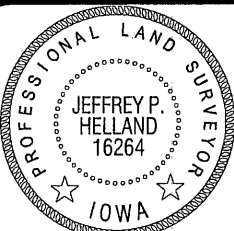
## PLAN VIEW

(SHOW A MINIMUM OF THREE REFERENCE TIES TO DURABLE PHYSICAL OBJECTS, RELEVANT MONUMENTS AND PHYSICAL  
CONDITIONS THAT WILL ENABLE RECOVERY OF THE CORNER.)



HELLAND ENGINEERING & SURVEYING, LTD.  
1107 Technology Parkway  
Cedar Falls, Iowa 50613-6951  
(319)-266-0161

SHINER = 8d NAIL & 1 5/16"Ø METAL SHINER  
BRASS TAG = 8d NAIL & 13/16"Ø BRASS TAG  
OPC = PLASTIC CAP (O=ORANGE, R=RED, Y=YELLOW)  
(00) RECORDED AS FILE NAME: 13-209-28.DWG



I hereby certify that this land surveying document was prepared  
and the related survey work was performed by me or under my  
direct personal supervision and that I am a duly licensed  
Professional Land Surveyor under the laws of the State of Iowa.  
*Jeffrey P. Helland* 10/4/13  
Jeffrey P. Helland  
License Number 16264  
My license renewal date is December 31, 2013.  
All pages or sheets are covered by this seal except:

LIST CORNERS TO BE INDEXED			
CORNER	SECTION	TOWNSHIP	RANGE
N 1/4 CORNER	15	88N	11W
S 1/4 CORNER	10	88N	11W