

Michael R. Fagle, P.L.S.

AECOM, 501 Sycomore St., Suite 222, Waterloo, Iowa 50703

I-319-232-6531

UNITED STATES PUBLIC LAND SURVEY CORNER CERTIFICATE  
OF

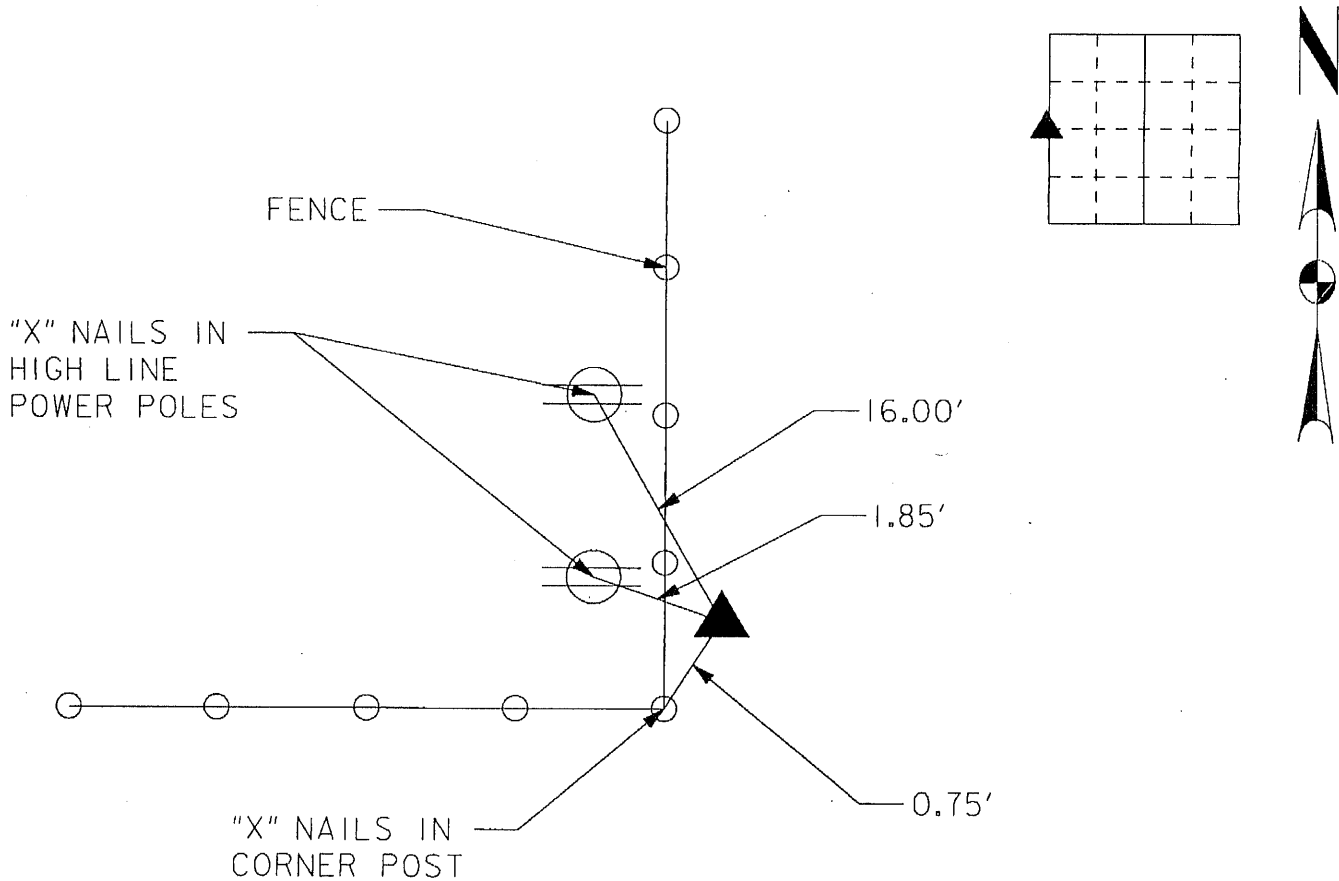
Land Survey Monuments situated in Section 13, Township 88 North,  
Range 11 West, of the Fifth Principal Meridian, BLACK HAWK  
County, Iowa. Previously recorded in \_\_\_\_\_  
in County Recorder's Office. (Book, Page, Document Number, etc.)

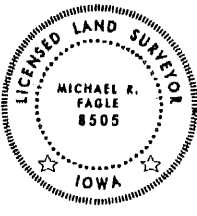
(Show reason for preparing this certificate, the evidence and detailed procedures used in establishing the corner positions and monumentation found or placed.)

Monument Description and Remarks: FOUND STANDARD CONCRETE MONUMENT  
FLUSH WITH GROUND.

PLAN - VIEW

(Show a minimum of three reference ties to durable physical objects, relevant monuments and physical conditions that will enable recovery of the corner.)





I hereby certify that this Land Surveying document was prepared by me or under my direct personal supervision and that I am a duly Licensed Land Surveyor under the laws of the State of Iowa.

Michael R. Fagle 1-05-2011  
MICHAEL R. FAGLE Date  
License number 8505  
My license renewal date is December 31, 2012  
Pages or sheets covered by this seal:  
THIS SHEET

List Corners to be Indexed			
Corners	Section	Twp	Range
WEST 1/4 CORNER	13	T 88 N	R 11 W

X 900 RS