

Doc ID: 004594940001 Type: GEN
Kind: CORNER
Recorded: 10/04/2011 at 12:41:09 PM
Fee Amt: \$7.00 Page 1 of 1
Black Hawk County Iowa
JUDITH A MCCARTHY RECORDER
File 2012-00006016

* Paul H. Helland, 1107 Technology Parkway, Cedar Falls, Iowa 50613-6951, (319)-266-0161

UNITED STATES PUBLIC LAND SURVEY CORNER CERTIFICATE OF

LAND SURVEY MONUMENTS SITUATED IN SECTION NO. 13, TOWNSHIP NO. 88 NORTH, RANGE
NO. 11 WEST OF THE FIFTH PRINCIPAL MERIDIAN, BLACK HAWK COUNTY, IOWA.
PREVIOUSLY RECORDED IN N/A

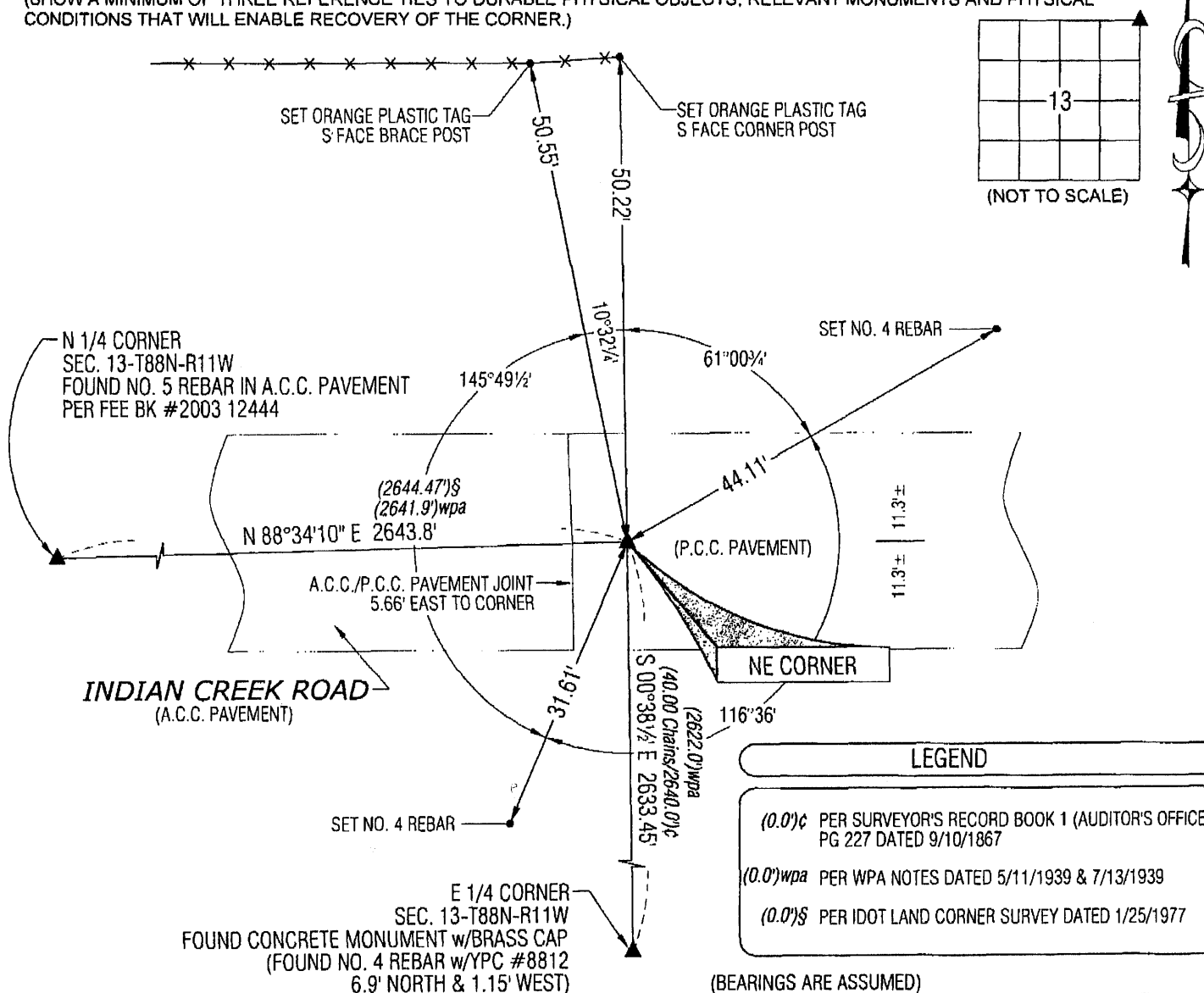
(SHOW REASON FOR PREPARING THIS CERTIFICATE, THE EVIDENCE AND DETAILED PROCEDURES USED IN ESTABLISHING THE
CORNER POSITIONS AND MONUMENTATION FOUND OR PLACED.)

MONUMENT DESCRIPTION AND REMARKS:

USPLSCC BOOK 2 PAGE 135 REFERENCE TIES HAVE CHANGED. SURVEY COMPLETED IN THE NE 1/4 OF SEC. 13-T88N-R11W.
→ **NE CORNER:** AUDITOR'S SURVEYOR RECORD BOOK 1 PAGE 227 DATED 9/10/1867 CALLS FOR [STONE]. BLACK HAWK
COUNTY ENGINEER'S REFERENCE TIES DATED 7/13/1939 CALLS FOR [FOUND LIME STONE 16"x8"x3" AND LATH 19" LONG
POINTED. LOWERED EVIDENCE AND SET C.M. ON TOP 12" DEEP]. IDOT LAND CORNER SURVEY DATED 1/25/1977 CALLS FOR
[FOUND IRON PIN OVER STD. CONC. MON.]. PLAT OF SURVEY FILE #2003 0026 DATED 12/17/2002 CALLS FOR [RESET
FROM HWY PLANS]. USPLSCC BOOK 2 PAGE 135 DATED 12/20/2002 CALLS FOR [MONUMENT LIKELY OBLITERATED WHEN
PCC PAVEMENT WAS PLACED. CUT "+", SET PK IN CL]. FOUND CUT "+" AND A P-K NAIL IN THE CENTERLINE JOINT OF
P.C.C. PAVEMENT. SAID NAIL IS 5.66' EAST OF A.C.C. AND P.C.C. CHANGE. UTILIZED SAID P-K NAIL AS CORNER.

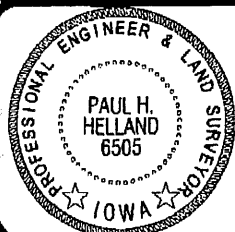
PLAN VIEW

(SHOW A MINIMUM OF THREE REFERENCE TIES TO DURABLE PHYSICAL OBJECTS, RELEVANT MONUMENTS AND PHYSICAL
CONDITIONS THAT WILL ENABLE RECOVERY OF THE CORNER.)



HES HELLAND ENGINEERING & SURVEYING, LTD.
1107 Technology Parkway
Cedar Falls, Iowa 50613-6951
(319)-266-0161

SHINER = 8D NAIL & 1 5/16" Ø METAL SHINER
BRASS TAG = 8D NAIL & 13/16" Ø BRASS TAG
OPC = PLASTIC CAP (O=ORANGE, R=RED, Y=YELLOW)
(00) RECORDED AS FILE NAME: 11-217C2.DWG



I hereby certify that this land surveying document was prepared
and the related survey work was performed by me or under my
direct personal supervision and that I am a duly licensed Land
Surveyor under the laws of the State of Iowa.
Paul H. Helland
License Number 6505
My license renewal date is December 31, 2011.
All pages or sheets are covered by this seal except:

LIST CORNERS TO BE INDEXED			
CORNER	SECTION	TOWNSHIP	RANGE
NE CORNER	13	88N	11W
SE CORNER	12	88N	11W
SW CORNER	18	88N	10W
NW CORNER	19	88N	10W