

Paul H. Helland, 1107 Technology Parkway, Cedar Falls, Iowa 50613-6951, (319)-266-0161

UNITED STATES PUBLIC LAND SURVEY CORNER CERTIFICATE
OF

LAND SURVEY MONUMENTS SITUATED IN SECTION NO. 13, TOWNSHIP NO. 88 NORTH, RANGE NO. 11 WEST OF THE FIFTH PRINCIPAL MERIDIAN, BLACK HAWK COUNTY, IOWA.
PREVIOUSLY RECORDED IN N/A

(SHOW REASON FOR PREPARING THIS CERTIFICATE, THE EVIDENCE AND DETAILED PROCEDURES USED IN ESTABLISHING THE CORNER POSITIONS AND MONUMENTATION FOUND OR PLACED.)

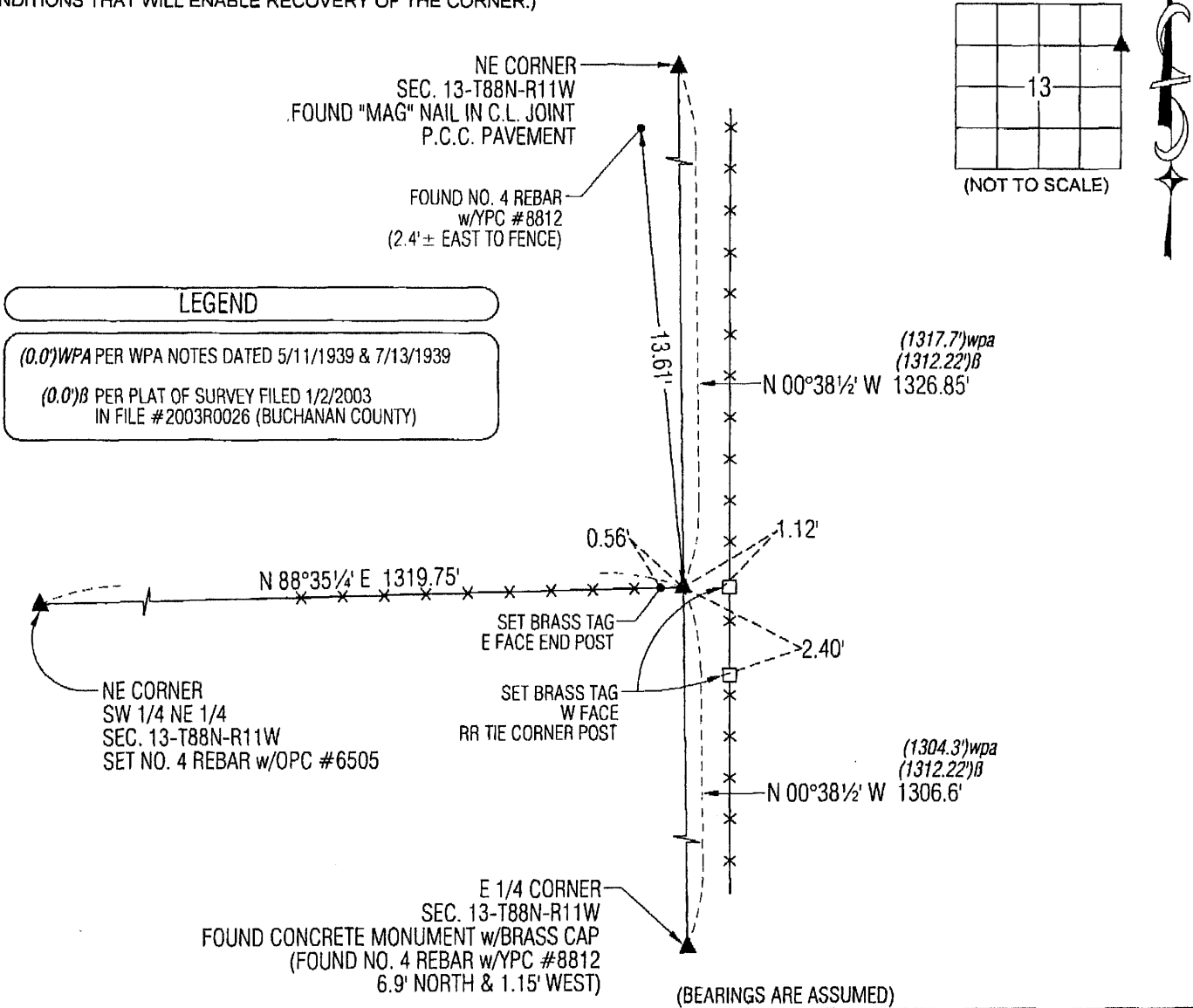
MONUMENT DESCRIPTION AND REMARKS:

NO USPLSCC ON FILE. SURVEY COMPLETED IN THE NE 1/4 OF SEC. 13-T88N-R11W.

NE CORNER OF SE 1/4 NE 1/4: NO BLACK HAWK OR BUCHANAN COUNTY ENGINEER'S REFERENCE TIES AVAILABLE. WPA NOTES DATED 7/13/1939 CALLS FOR [3/4 1/4 FC. RUN. E & W]. PLAT OF SURVEY FILED 1/2/2003 IN FILE #2003R0026 (BUCHANAN COUNTY) CALLS FOR [SET 1/2"Ø REBAR & CAP #8812]. FOUND NO. 4 REBAR w/YPC #8812 WHICH IS 13.61' NORTH OF THE INTERSECTION OF EXISTING FENCES (N.S. & E) AND 2.4'± WEST OF N-S FENCELINE. SET NO. 4 REBAR w/OPC #6505 ON A STRAIGHT LINE BETWEEN THE NE CORNER AND E 1/4 CORNER OF SECTION 13 AND IN LINE WITH THE FENCE RUNNING WEST. UTILIZED SAID OPC #6505 AS CORNER.

PLAN VIEW

(SHOW A MINIMUM OF THREE REFERENCE TIES TO DURABLE PHYSICAL OBJECTS, RELEVANT MONUMENTS AND PHYSICAL CONDITIONS THAT WILL ENABLE RECOVERY OF THE CORNER.)



HES

HELLAND ENGINEERING & SURVEYING, LTD.
1107 Technology Parkway
Cedar Falls, Iowa 50613-6951
(319)-266-0161

PAUL H. HELLAND
6505

I hereby certify that this land surveying document was prepared and the related survey work was performed by me or under my direct personal supervision and that I am a duly licensed Land Surveyor under the laws of the State of Iowa.
Paul H. Helland 10/4/11
Paul H. Helland
License Number 6505
My license renewal date is December 31, 2011.
All pages or sheets are covered by this seal except:

SHINER = 8D NAIL & 1 5/16"Ø METAL SHINER
BRASS TAG = 8D NAIL & 13/16"Ø BRASS TAG
OPC = PLASTIC CAP (O=ORANGE, R=RED, Y=YELLOW)
(00') RECORDED AS FILE NAME: 11-217C3.DWG

LIST CORNERS TO BE INDEXED

CORNER	SECTION	TOWNSHIP	RANGE
NE COR. SE 1/4 NE 1/4	13	88N	11W
SE COR. NE 1/4 NE 1/4	13	88N	11W
SW COR. NW 1/4 NW 1/4	18	88N	10W
NW COR. SW 1/4 NW 1/4	18	88N	10W

17m)