



Doc ID: 004594930001 Type: GEN  
Kind: CORNER  
Recorded: 10/04/2011 at 12:40:47 PM  
Fee Amt: \$7.00 Page 1 of 1  
Black Hawk County Iowa  
JUDITH A MCCARTHY RECORDER

File 2012-00006015

Paul H. Helland, 1107 Technology Parkway, Cedar Falls, Iowa 50613-6951, (319)-266-0161

# UNITED STATES PUBLIC LAND SURVEY CORNER CERTIFICATE OF

LAND SURVEY MONUMENTS SITUATED IN SECTION NO. 13, TOWNSHIP NO. 88 NORTH, RANGE  
NO. 11 WEST OF THE FIFTH PRINCIPAL MERIDIAN, BLACK HAWK COUNTY, IOWA.  
PREVIOUSLY RECORDED IN BOOK 2 PAGE 133 (BUCHANAN COUNTY RECORDER'S OFFICE)

(SHOW REASON FOR PREPARING THIS CERTIFICATE, THE EVIDENCE AND DETAILED PROCEDURES USED IN ESTABLISHING THE  
CORNER POSITIONS AND MONUMENTATION FOUND OR PLACED.)

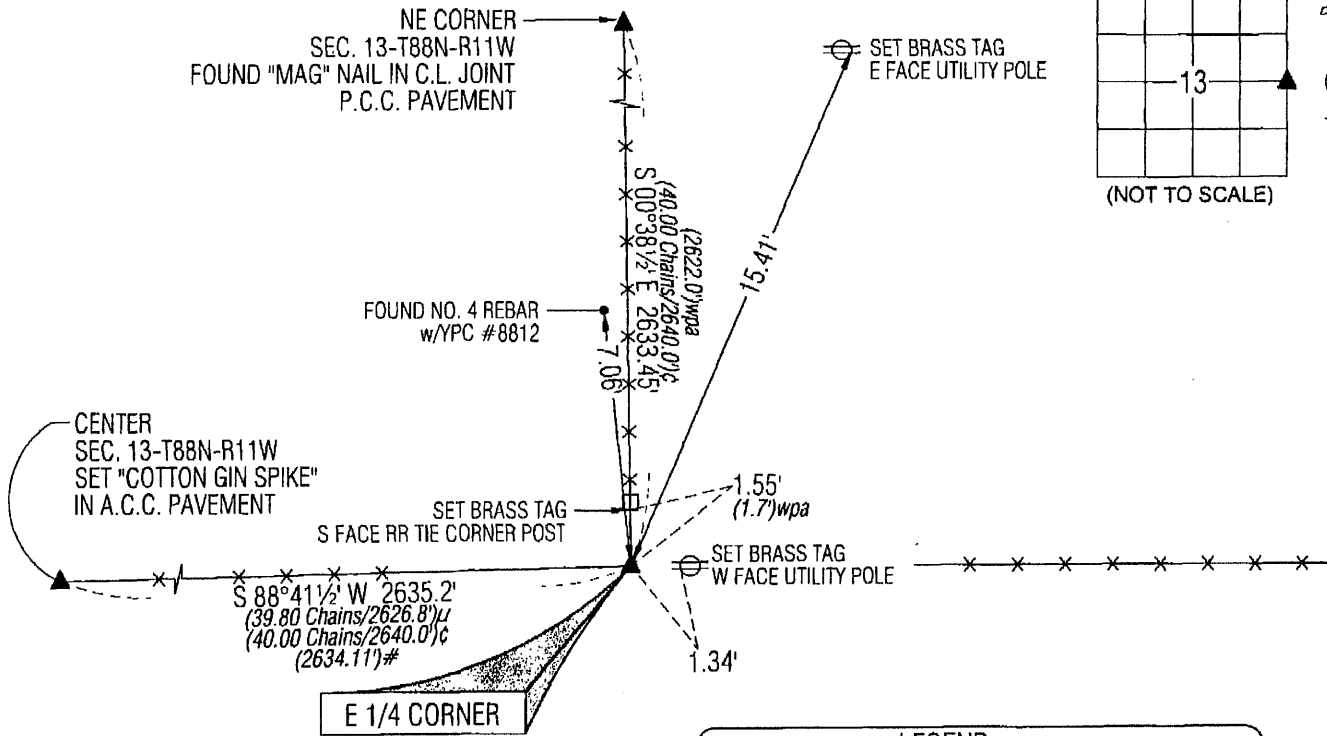
### MONUMENT DESCRIPTION AND REMARKS:

USPLSCC BOOK 2 PAGE 133 MONUMENTATION AND REFERENCE TIES HAVE CHANGED. SURVEY COMPLETED IN THE NE 1/4  
OF SEC. 13-T88N-R11W.

→ **E 1/4 CORNER:** WPA NOTES DATED 7/13/1939 CALLS FOR [FOUND NIGGERHEAD 14"x13"x5". LOWERED EVIDENCE AND  
SET C.M. ON TOP 12" DEEP]. PLAT OF SURVEY FILE #2003 0026 DATED 12/17/2002 CALLS FOR [RESET FROM 1939 BLACK  
HAWK CO. SURVEY NOTES]. BUCHANAN COUNTY USPLSCC BOOK 2 PAGE 133 DATED 12/26/2002 CALLS FOR [PLACED 1/2"  
DIA. REBAR WITH YPC #8812. SEARCH EXTENSIVELY BY EXCAVATING - SEARCH UNSUCCESSFUL]. PLAT OF SURVEY FILE  
#2011-00012101 DATED 12/11/2010 CALLS FOR [FND. 1/2" REBAR/YELLOW PLASTIC CAP NO. 8812 FROM RECORD TIES].  
AFTER A BRIEF SEARCH OF THE AREA, A CONCRETE MONUMENT WITH BRASS CAP WAS FOUND (0.3' DEEP) CORRESPONDING  
TO WPA NOTES. ALSO FOUND A NO. 4 REBAR w/YPC #8812 6.9' NORTH & 1.15' WEST OF SAID MONUMENT PER BOOK 2 PG  
133. UTILIZED SAID CONCRETE MONUMENT AS CORNER.

### PLAN VIEW

(SHOW A MINIMUM OF THREE REFERENCE TIES TO DURABLE PHYSICAL OBJECTS, RELEVANT MONUMENTS AND PHYSICAL  
CONDITIONS THAT WILL ENABLE RECOVERY OF THE CORNER.)



### LEGEND

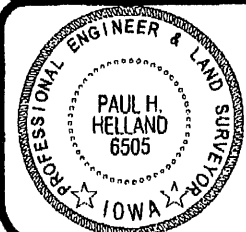
- (0.0')c PER SURVEYOR'S RECORD BOOK 1 (AUDITOR'S OFFICE)  
PG 227 DATED 9/10/1867
- (0.0')u PER GEORGE MILLER COUNTY SURVEYOR'S RECORD
- (0.0')WPA PER WPA NOTES DATED 5/11/1939 & 7/13/1939
- (0.0')# PER PLAT OF SURVEY FILED 12/14/2010-00012101

(BEARINGS ARE ASSUMED)



HELLAND ENGINEERING & SURVEYING, LTD.  
1107 Technology Parkway  
Cedar Falls, Iowa 50613-6951  
(319)-266-0161

SHINER = 8D NAIL & 1 5/16"Ø METAL SHINER  
BRASS TAG = 8D NAIL & 13/16"Ø BRASS TAG  
OPC = PLASTIC CAP (O=ORANGE, R=RED, Y=YELLOW)  
(00') RECORDED AS FILE NAME: 11-217C1.DWG



I hereby certify that this land surveying document was prepared  
and the related survey work was performed by me or under my  
direct personal supervision and that I am a duly licensed Land  
Surveyor under the laws of the State of Iowa.  
*Paul H. Helland*  
Paul H. Helland  
License Number 6505  
My license renewal date is December 31, 2011.  
All pages or sheets are covered by this seal except:

LIST CORNERS TO BE INDEXED			
CORNER	SECTION	TOWNSHIP	RANGE
E 1/4 CORNER	13	88N	11W
W 1/4 CORNER	18	88N	11W