

Paul H. Helland, 1107 Technology Parkway, Cedar Falls, Iowa 50613-6951, (319)-266-0161

UNITED STATES PUBLIC LAND SURVEY CORNER CERTIFICATE  
OF

LAND SURVEY MONUMENTS SITUATED IN SECTION NO. 13, TOWNSHIP NO. 88 NORTH, RANGE NO. 11 WEST OF THE FIFTH PRINCIPAL MERIDIAN, BLACK HAWK COUNTY, IOWA.  
PREVIOUSLY RECORDED IN N/A

(SHOW REASON FOR PREPARING THIS CERTIFICATE, THE EVIDENCE AND DETAILED PROCEDURES USED IN ESTABLISHING THE CORNER POSITIONS AND MONUMENTATION FOUND OR PLACED.)

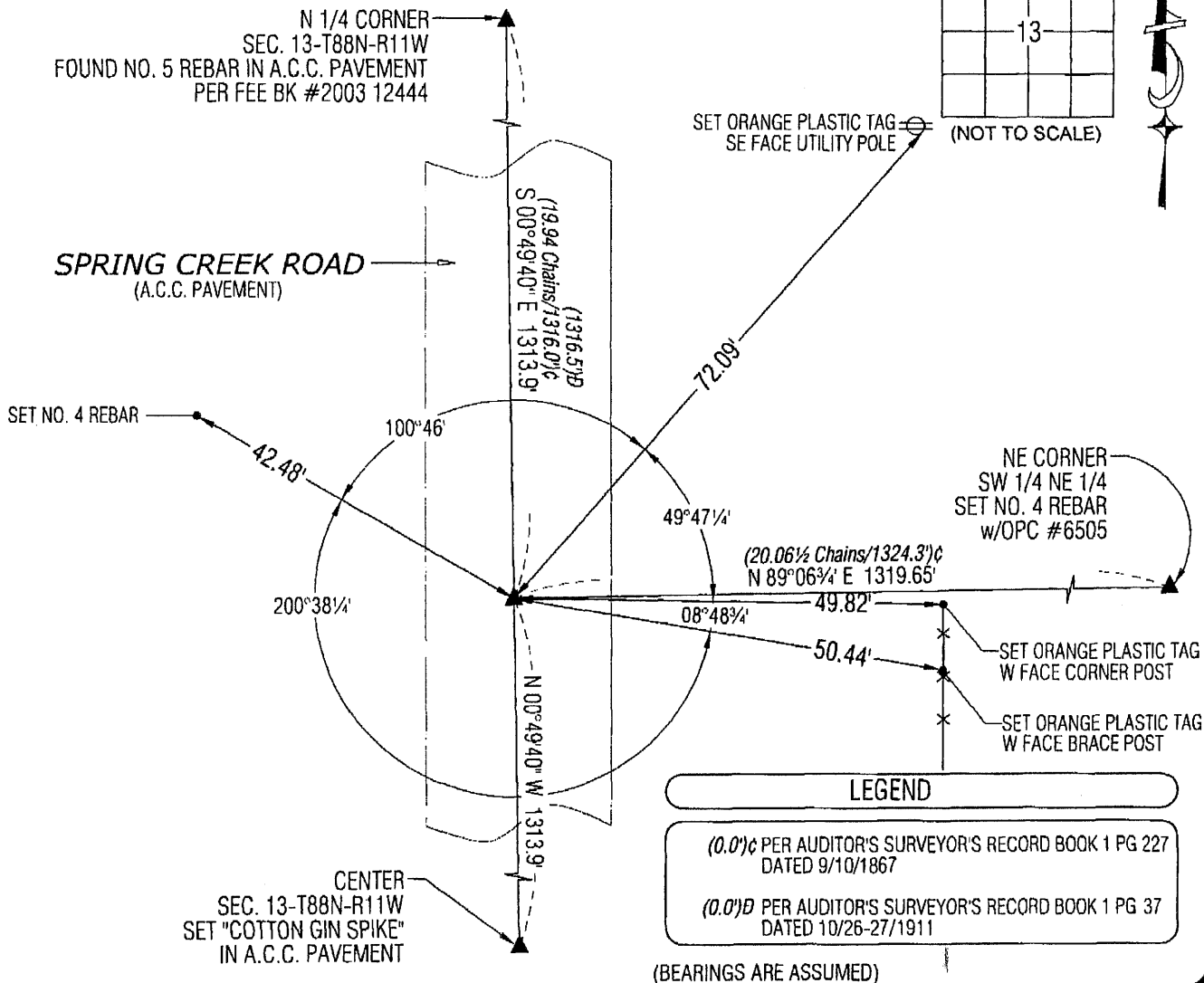
MONUMENT DESCRIPTION AND REMARKS:

NO USPLSCC ON FILE. SURVEY COMPLETED IN THE NE 1/4 OF SEC. 13-T88N-R11W.

NE CORNER OF SE 1/4 NW 1/4: NO BLACK HAWK COUNTY ENGINEER'S REFERENCE TIES AVAILABLE. AUDITOR'S SURVEY RECORD BOOK 1 PAGE 227 DATED 9/10/1867 CALLS FOR [STONE]. SET "MAG" NAIL IN A.C.C. AT THE MIDPOINT OF A STRAIGHT LINE BETWEEN THE N 1/4 CORNER AND CENTER OF SECTION 13. UTILIZED SAID "MAG" NAIL AS CORNER.

PLAN VIEW

(SHOW A MINIMUM OF THREE REFERENCE TIES TO DURABLE PHYSICAL OBJECTS, RELEVANT MONUMENTS AND PHYSICAL CONDITIONS THAT WILL ENABLE RECOVERY OF THE CORNER.)



HELLAND ENGINEERING & SURVEYING, LTD.  
1107 Technology Parkway  
Cedar Falls, Iowa 50613-6951  
(319)-266-0161

SHINER = 8D NAIL & 1 5/16"Ø METAL SHINER  
BRASS TAG = 8D NAIL & 13/16"Ø BRASS TAG  
OPC = PLASTIC CAP (O=ORANGE, R=RED, Y=YELLOW)  
(00') RECORDED AS FILE NAME: 11-217C4.DWG

LIST CORNERS TO BE INDEXED

| CORNER                | SECTION | TOWNSHIP | RANGE |
|-----------------------|---------|----------|-------|
| NE COR. SE 1/4 NW 1/4 | 13      | 88N      | 11W   |
| SE COR. NE 1/4 NW 1/4 | 13      | 88N      | 11W   |
| SW COR. NW 1/4 NE 1/4 | 13      | 88N      | 11W   |
| NW COR. SW 1/4 NE 1/4 | 13      | 88N      | 11W   |

I hereby certify that this land surveying document was prepared and the related survey work was performed by me or under my direct personal supervision and that I am a duly licensed Land Surveyor under the laws of the State of Iowa.  
*Paul H. Helland* 10/4/11  
Paul H. Helland  
License Number 6505  
My license renewal date is December 31, 2011.  
All pages or sheets are covered by this seal except: