

SC
Misc
INDEX
MARGIN
PROOF
COMPARE

BLACK HAWK COUNTY IOWA:SS
FILED FOR RECORD Feb 6 -,1998 AT
4:00 P M., AND RECORDED IN BOOK 328
OF Misc PAGE 924
Thomas S. Ross RECORDER
FEE n/c
ENGINEERS OFFICE

15332

County Assessor

PAUL H. HELLAND, 1107 TECHNOLOGY PARKWAY, CEDAR FALLS, IOWA 50613, (319)-266-0161

UNITED STATES PUBLIC LAND SURVEY CORNER CERTIFICATE OF

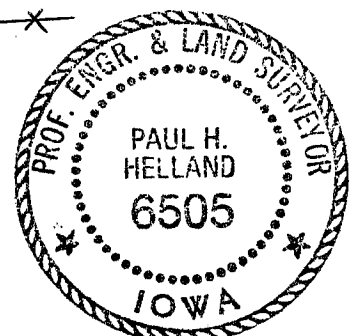
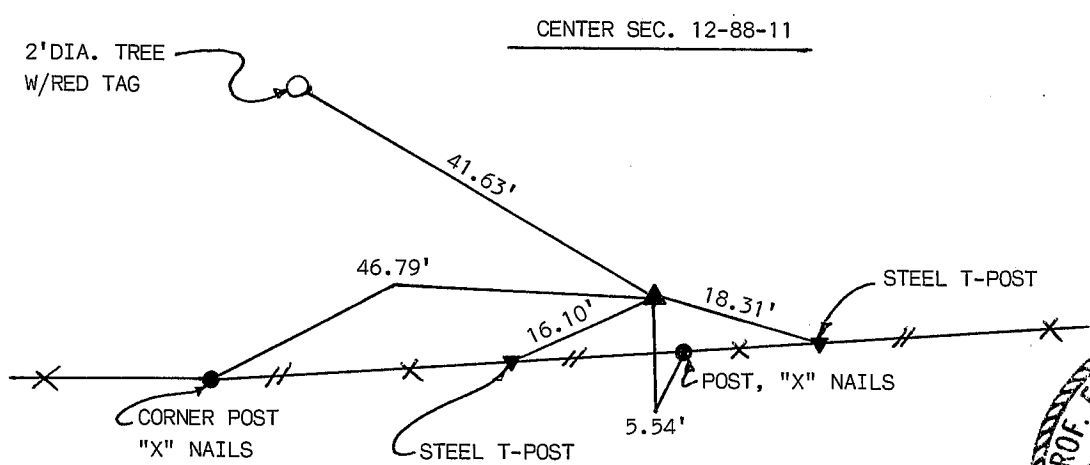
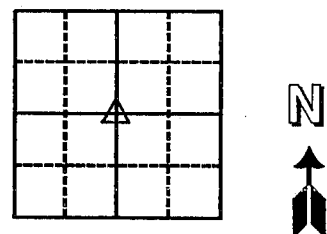
Land Survey Monuments situated in Section 12, Township 88, Range 11, of the Fifth Principal Meridian, BLACK HAWK County, Iowa.
Previously recorded in Book , Page .

(Show reason for preparing this certificate, the evidence and detailed procedures used in establishing the corner positions and monumentation found or placed.)

Monument Description and Remarks: SURVEY DONE IN SW 1/4 NE 1/4 SEC. 12-88-11
CENTER - FOUND I.D.O.T. MARKER 0.2' DEEP, W/CAP READING "IOWA D.O.T. HWY DIV. LAND CORNER,
DO NOT DISTURB"

PLAN - VIEW

(Show a minimum of three reference ties to durable physical objects, relevant monuments and physical conditions that will enable recovery of the corner.)



97-298

I HEREBY CERTIFY THAT THIS PLAT, MAP, SURVEY OR REPORT WAS MADE BY ME OR UNDER MY DIRECT PERSONAL SUPERVISION AND THAT I AM A DULY REGISTERED LAND SURVEYOR UNDER THE LAWS OF THE STATE OF IOWA.
Paul H. Helland DATE 2/6/98
PAUL H. HELLAND, P.E. & R.L.S. IOWA REGISTRATION NO. 6505
MY REGISTRATION EXPIRES DECEMBER 31, 1997
HELLAND ENGINEERING & SURVEYING, LTD.
1107 TECHNOLOGY PARKWAY
CEDAR FALLS, IOWA 50613
319-266-0161

List Corners to be Indexed

Corners	Section	Twp	Range
CENTER	12	88	11