

2025-00646  
RECORDED: 01/14/2025 01:36:28 PM  
RECORDING FEE: \$7.00  
IOWA E-FILING FEE: \$3.13  
COMBINED FEE: \$10.13  
REVENUE TAX: \$0.00  
SANDIE L. SMITH, RECORDER  
BLACK HAWK COUNTY, IOWA

Prepared / Return To: Matthew A. Kofa, P.L.S., VJ Engineering, 1501 Technology Parkway, Suite 100, Cedar Falls, Iowa, 50613, (319) 266-5829

United States Public Land Survey Corner Certificate of

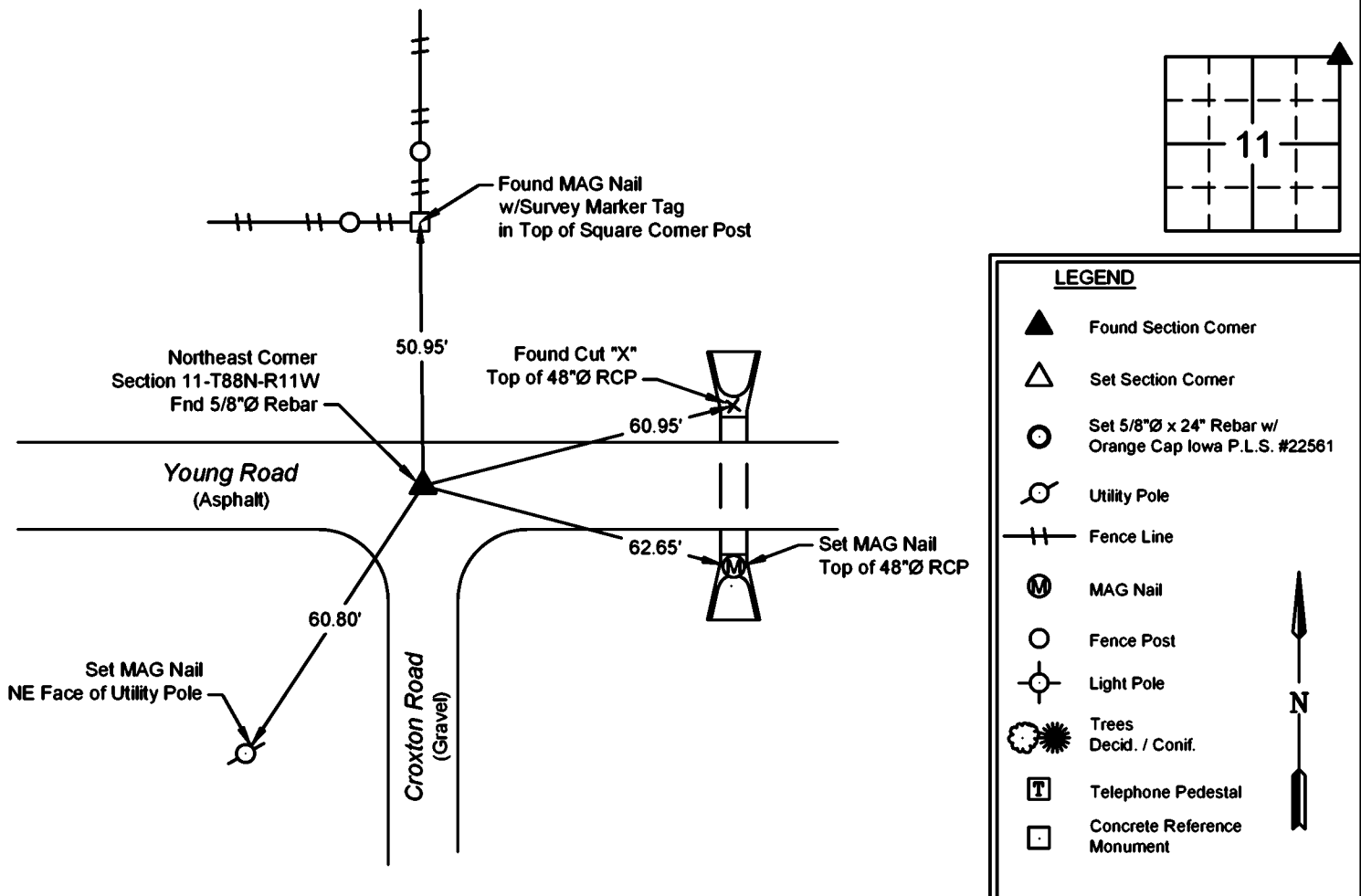
Land Survey Monuments situated in Section No. 11, Township No. 88 North, Range No. 11 West, of the Fifth Principal Meridian, Black Hawk County, Iowa Previously recorded in Document No. Fee Book #2005-00983

Show reason for preparing this certificate, the evidence and detailed procedures used in establishing the corner positions and monumentation found or placed.

Monument Description and Remarks: Northeast Corner -- Section 11-T88N-R11W  
Previous corner certificate calls out setting a 5/8"Øx5" rebar at the corner. Searched area as indicated and found 5/8"Ø rebar flush with the surface of the asphalt road, used found 5/8"Ø rebar as the corner.  
This corner certificate is being prepared to update the reference ties.

PLAN - VIEW

(Show a minimum of three reference ties to durable physical objects, relevant monuments and physical conditions that will enable recovery of the corner.)



I hereby certify that this land surveying document was prepared and the related survey work was performed by me or under my direct personal supervision and that I am a duly licensed Land Surveyor under the laws of the State of Iowa.

Matthew A. Kofa, P.L.S.  
License Number 22561  
My license renewal date is December 31, 2026  
Pages or sheets covered by this seal: 1 of 1

List Corner to be Indexed

Corner	Section	Twp	Range
NE	11	88N	11W
NW	12	88N	11W
SE	02	88N	11W
SW	01	88N	11W



VJ Engineering  
1501 Technology Parkway  
Cedar Falls, Iowa - 319-266-5829

Section Corner  
Reference Ties

file no.  
248120  
drawn by  
ME  
date  
01/13/25