

[illegible]

Kyle J. Helland, 6109 Chancellor Drive, Cedar Falls, Iowa 50613-6916, (319)-266-0161

UNITED STATES PUBLIC LAND SURVEY CORNER CERTIFICATE OF

LAND SURVEY MONUMENTS SITUATED IN SECTION NO. 11, TOWNSHIP NO. 88 NORTH, RANGE
NO. 11 WEST OF THE FIFTH PRINCIPAL MERIDIAN, BLACK HAWK COUNTY, IOWA.
PREVIOUSLY RECORDED IN FEE BOOK # 2005 00977

(SHOW REASON FOR PREPARING THIS CERTIFICATE, THE EVIDENCE AND DETAILED PROCEDURES USED IN ESTABLISHING THE CORNER POSITIONS AND MONUMENTATION FOUND OR PLACED.)

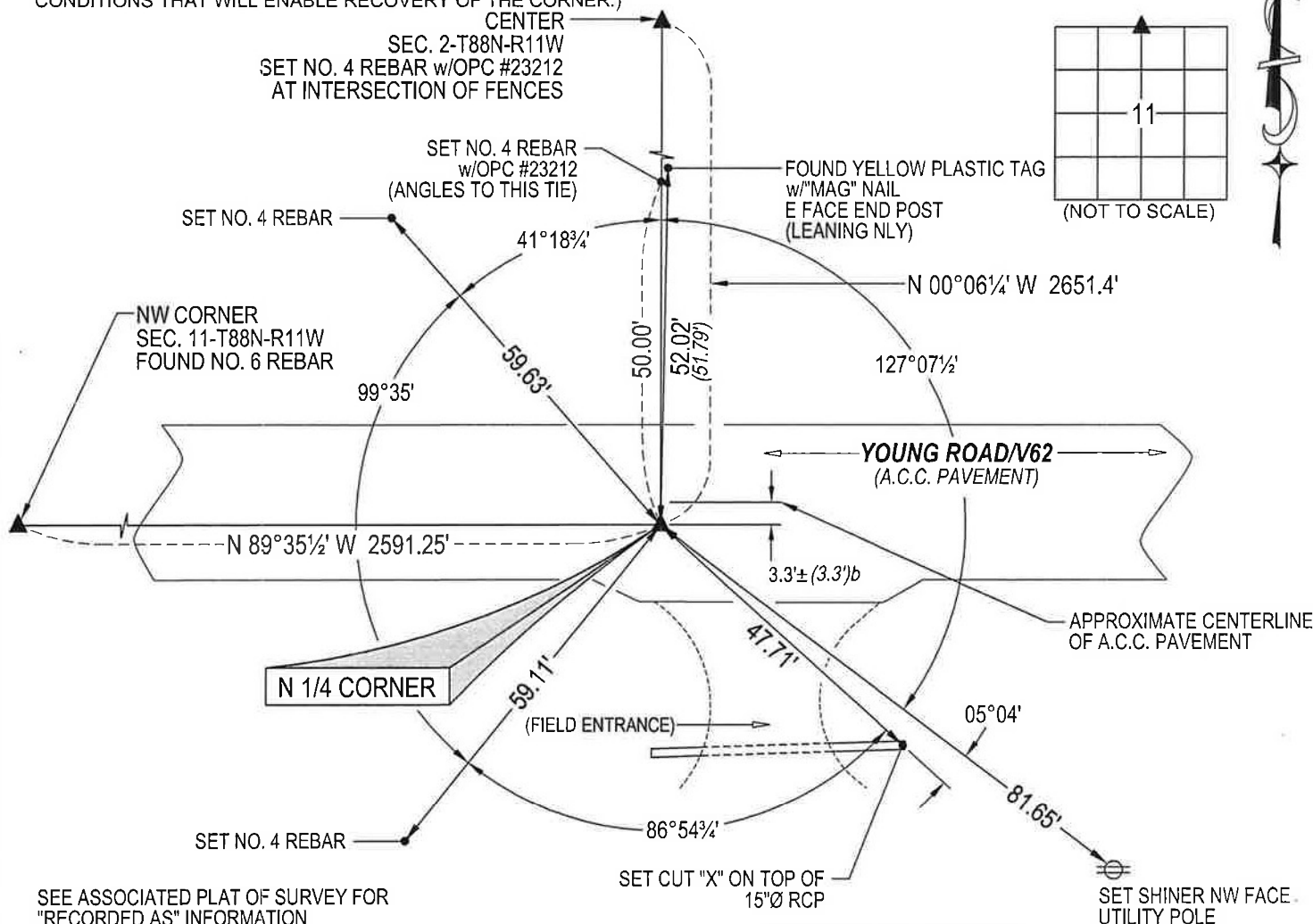
MONUMENT DESCRIPTION AND REMARKS:

ONLY ONE REFERENCE TIE REMAINS. SURVEY COMPLETED IN THE SW 1/4 OF SEC. 2-T88N-R11W.

→ **N 1/4 CORNER:** WPA NOTES PAGE 28 DATED 07/05/1939 CALLS FOR [FOUND LIME STONE 18"x11½"x4" IRON BAR 1"x20¾" LONG, AND REMNANT OF A WOODSTAKE. LOWERED EVIDENCE AND SET C.M. ON TOP 12" DEEP.]. IDOT LAND CORNER SURVEY DATED 01/25/1977 CALLS FOR [FOUND IRON PIN IN A.C.]. PLAT OF SURVEY BOOK 320 PAGE 620 DATED 05/22/1996 CALLS FOR [FOUND 5/8" REBAR]. USPLSCC FEE BOOK # 2005 00977 DATED 07/12/2004 CALLS FOR [FOUND #5 RBR. PRIOR TO RESURFACING. RE-EST. #5 REBAR x 5" L. FLUSH w/ ACC @ 3.3' SOUTH OF C.L. ACC JOINT AND ALIGNED w/ FENCE NORTH AND SOUTH.] FOUND NO. 5 REBAR FLUSH IN A.C.C. PAVEMENT AND UTILIZED AS THE CORNER.

PLAN VIEW

(SHOW A MINIMUM OF THREE REFERENCE TIES TO DURABLE PHYSICAL OBJECTS, RELEVANT MONUMENTS AND PHYSICAL CONDITIONS THAT WILL ENABLE RECOVERY OF THE CORNER.)



SEE ASSOCIATED PLAT OF SURVEY FOR
"RECORDED AS" INFORMATION

(BEARINGS ARE ASSUMED)

HELLAND ENGINEERING & SURVEYING, LTD.
6109 Chancellor Drive
Cedar Falls, Iowa 50613-6916
(319)-266-0161

BRASS TAG = 4d. NAIL & 13/16"Ø BRASS TAG DRAWN BY: JPH
SHINER = 1"Ø STEEL SHINER w/MASONRY NAIL
OPC = PLASTIC CAP (O=ORANGE, R=RED, Y=YELLOW)
(00') RECORDED AS FILE NAME: 22-261-24.DWG

I hereby certify that this land surveying document was prepared and the related survey work was performed by me or under my direct personal supervision and that I am a duly licensed Professional Land Surveyor under the laws of the State of Iowa.

Kyle J. Holland 12/1/31
 License Number 23212
 My license renewal date is December 31, 2023.
 All pages or sheets are covered by this seal except:

LIST CORNERS TO BE INDEXED

CORNER	SECTION	TOWNSHIP	RANGE
N 1/4 CORNER	11	88N	11W
S 1/4 CORNER	2	88N	11W