

PRANGE SURVEYING 3304 PANTHER LANE CEDAR FALLS IA 50613

Prepared by Dennis R. Prange, L.S., Prange Surveying, 3304 Panther Lane, Cedar Falls, Iowa 50613, (319) 277-4935

UNITED STATES PUBLIC LAND SURVEY CORNER CERTIFICATE OF

Land Survey Monuments situated in Section No. 10, Township No. 88 North, Range No. 11 West, of the Fifth Principal Meridian, Black Hawk County, Iowa.
Previously recorded in Book N/A on Page N/A in the office of the County Recorder.
(book, page, document number, etc.)

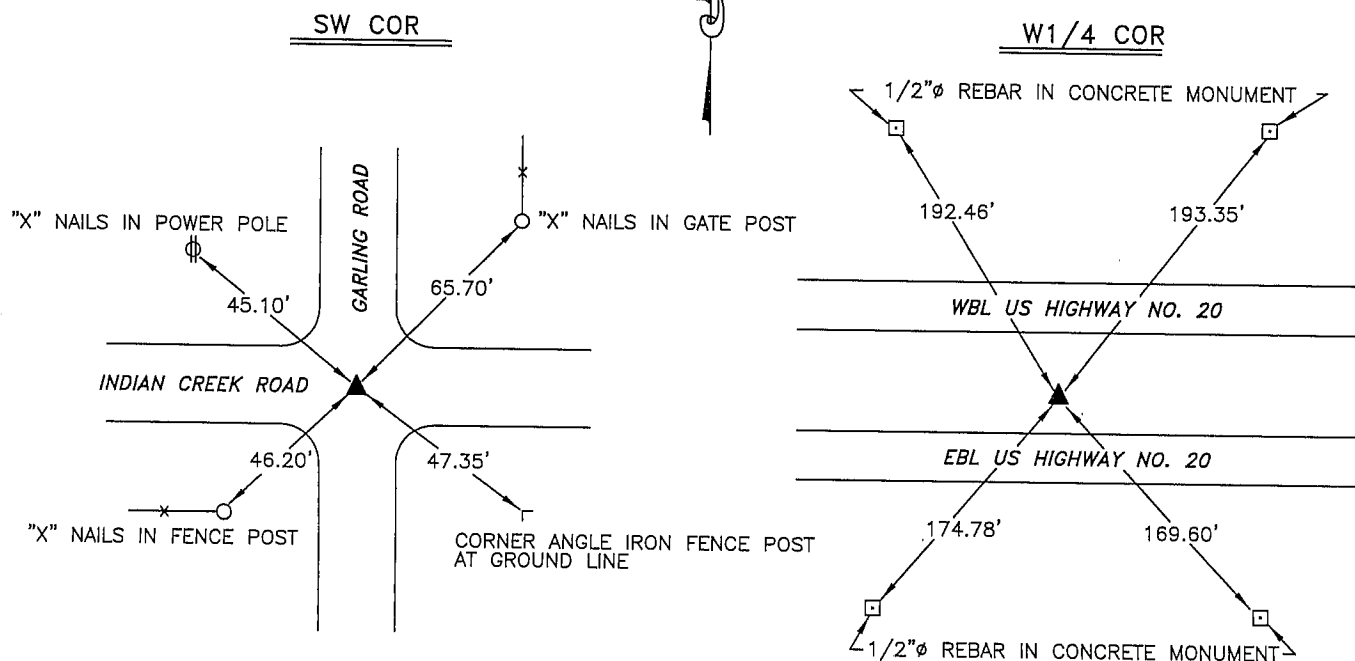
(Show reason for preparing this certificate, the evidence and detailed procedures used in establishing the corner positions and monumentation found or placed.)

Monument Description and Remarks: Southwest Corner Section 10-88-11 - Found
4" X 4" concrete monument 27" deep - Set 1/2"Ø rebar w/cap no. 10040 above.
West 1/4 Corner Section 10-88-11 - Found Iowa D.O.T. capped pin 6" deep in
median of U.S. Highway No. 20.

PLAN - VIEW

(Show a minimum of three reference ties to durable physical objects, relevant monuments and physical conditions that will enable recovery of the corner.)

NOT TO SCALE



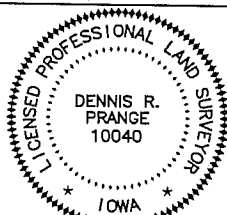
NOTE: ALL MEASUREMENTS ARE HORIZONTAL DISTANCE

I hereby certify that this land surveying document was prepared by me or under my direct personal supervision and that I am a duly licensed Professional Land Surveyor under the laws of the State of Iowa.

Signed: Dennis R. Prange
Dennis R. Prange, L.S. Iowa License No. 10040

Date: July 6, 2005

SEAL



My License renewal date is December 31, 2006.
Pages or sheets covered by this seal: this page only

Corners	List Corners to be Indexed	Section	Twp	Range
SW COR.	10	88	11	
W1/4 COR	10	88	11	

Drawn by: DRP

Checked by: