

SC
MISC
INDEX VS
MARGIN
PROOF or
COMPARE

FILED FOR RECORD Feb 5, 2001 AT
1:00 P M., AND RECORDED IN BOOK 341
OF MISC PAGE 797
Christina L. Jess RECORDER
FEE 1-5.00/
PAUL HELLAND

015518

Paul H. Helland, 1107 Technology Parkway, Cedar Falls, Iowa 50613-6951, (319)-266-0161

UNITED STATES PUBLIC LAND SURVEY CORNER CERTIFICATE
OF

LAND SURVEY MONUMENTS SITUATED IN SECTION NO. 10, TOWNSHIP NO. 88 NORTH, RANGE
NO. 11 WEST OF THE FIFTH PRINCIPAL MERIDIAN, BLACK HAWK COUNTY, IOWA.
PREVIOUSLY RECORDED IN BOOK, PAGE.

(SHOW REASON FOR PREPARING THIS CERTIFICATE, THE EVIDENCE AND DETAILED PROCEDURES USED IN ESTABLISHING THE
CORNER POSITIONS AND MONUMENTATION FOUND OR PLACED.)

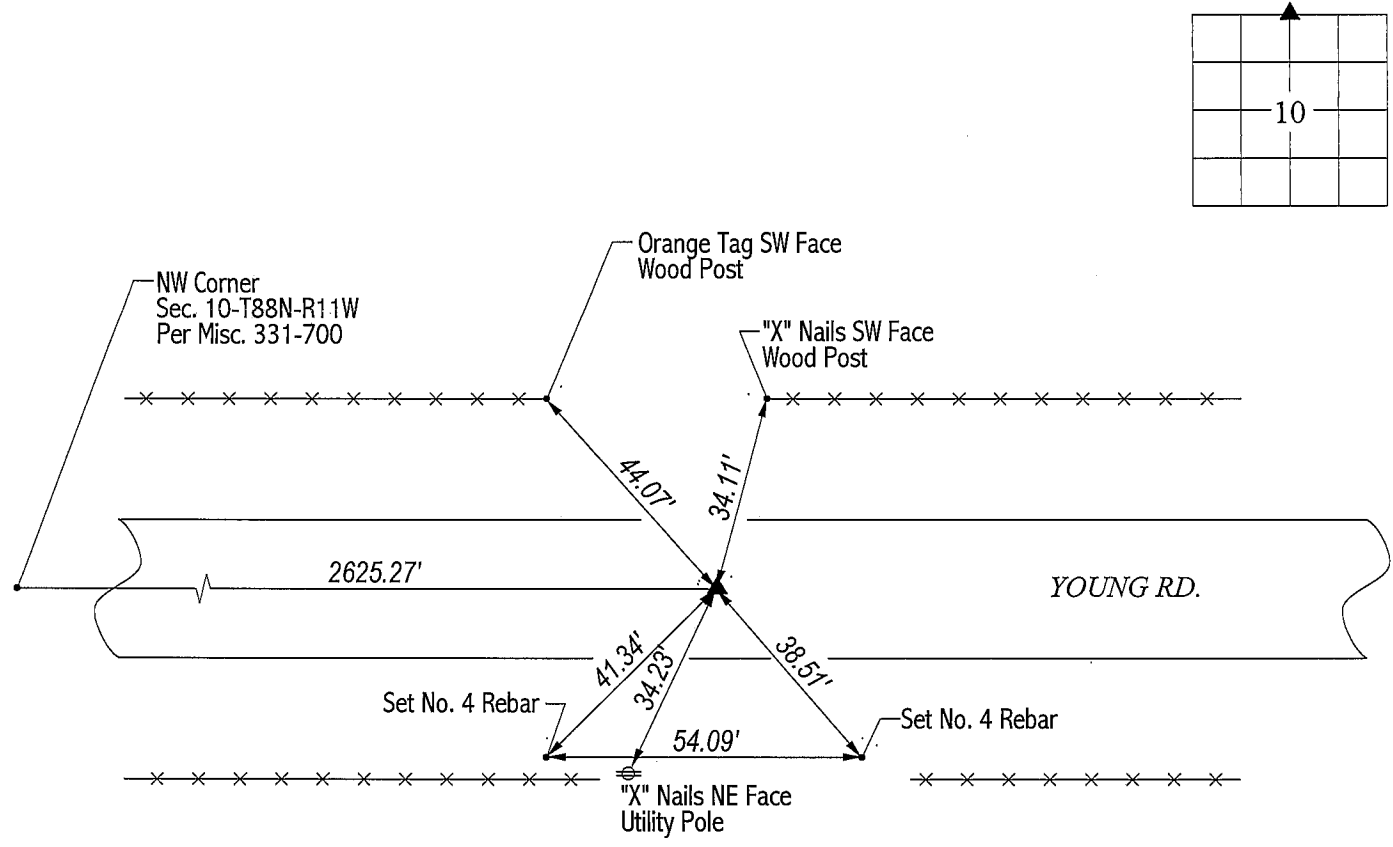
MONUMENT DESCRIPTION AND REMARKS:

SURVEY DONE IN NW 1/4 OF SEC. 10-T88N-R11W.

N 1/4 CORNER: County ties dated 7/5/1941 call for a concrete monument 2624.3 feet East of the NW Corner of said Sec. 10.
IDOT Land Corner Survey #16757 calls for an "iron" set over a standard concrete monument (24" deep). Found No. 4 rebar
0.2' deep per ties on IDOT Land Corner Survey #16757. Distance between NW Corner & N 1/4 Corner per IDOT Land
Corner Survey #16757 is 2625.47', distance measured is 2625.27'.

PLAN VIEW

(SHOW A MINIMUM OF THREE REFERENCE TIES TO DURABLE PHYSICAL OBJECTS, RELEVANT MONUMENTS AND PHYSICAL
CONDITIONS THAT WILL ENABLE RECOVERY OF THE CORNER.)

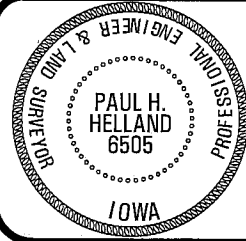


N 1/4 CORNER



HELLAND ENGINEERING & SURVEYING, LTD.
1107 Technology Parkway
Cedar Falls, Iowa 50613-6951
(319)-266-0161

FILE NAME: 01-112CC.DRG



I hereby certify that this land surveying document was prepared
and the related survey work was performed by me or under my
direct personal supervision and that I am a duly licensed Land
Surveyor under the laws of the State of Iowa.
Paul H. Helland 2/1/01
Paul H. Helland
License Number 6505
My license renewal date is December 31, 2001.
All pages or sheets are covered by this seal except:

LIST CORNERS TO BE INDEXED			
CORNER	SECTION	TOWNSHIP	RANGE
N 1/4 CORNER	10	88N	11W