

MISC INDEX MARGIN PROOF COMPARE

BLACK HAWK COUNTY IOWA: SS  
Filed for record Sep 28, 1998, at  
4:00 P.M. and recorded in Book 331  
of MISC Page 700.  
Recorder  
Fee n/c  
ENGINEER'S OFFICE

7238

County Assessor

PREPARED BY: BLACK HAWK COUNTY ENGINEERS OFFICE  
316 E. FIFTH STREET, ROOM 211 WATERLOO, IOWA 50703

PH.# (319) 291-2419  
FAX# (319) 291-2461

SLSI 9-94  
CERT 12-96

UNITED STATES PUBLIC LAND SURVEY CORNER CERTIFICATE OF  
Land Survey Monuments situated in Section 9, Township 88 N,  
Range 11 W, of the Fifth Principal Meridian, BLACK HAWK County, Iowa.  
Previously recorded in Misc. Book N/A, Page N/A, in County Recorder's Office.

(Show reason for preparing this certificate, the evidence and detailed procedures used in establishing the corner positions and monumentation found or placed.)

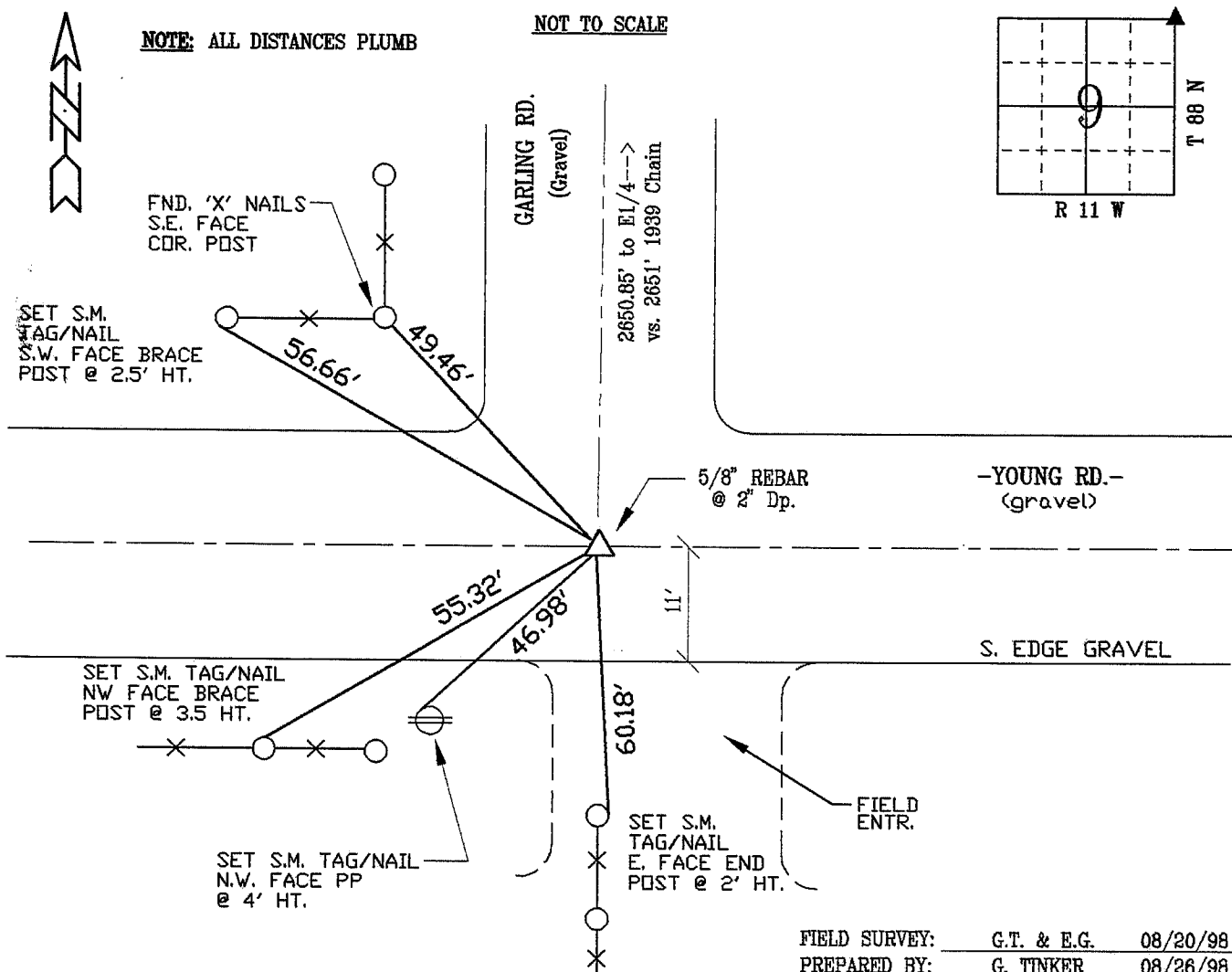
Monument Description and Remarks: FOUND 5/8" REBAR LOC. 2" DP. @ CL  
INTERSECTION OF YOUNG AND GARLING ROADS.

NO RECORD COUNTY TIES FOUND.

CORNER RETIED TO EST. R.O.W. LINE TO NORTH ALONG GARLING RD.

### PLAN - VIEW

(Show a minimum of three reference ties to durable physical objects, relevant monuments and physical conditions that will enable recovery of the corner.)

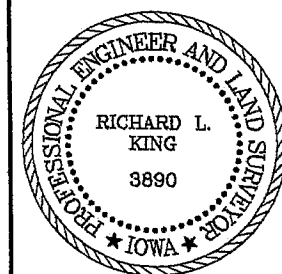


### CERTIFICATION

#### LIST CORNERS TO BE INDEXED

Corner	Section	Township	Range
N.E. COR.	9	88 N	11 W

BOOK 331 PAGE 700



I hereby certify that this land surveying document was prepared and the related survey work was performed by me or under my direct personal supervision and that I am a duly licensed Land Surveyor under the laws of the State of Iowa.

*Richard L. King* 9/25/98 (date)  
Richard L. King

License Number 3890

My license renewal date is December 31, 1999

Pages or sheets covered by this seal:

This Land Corner Certificate Only.