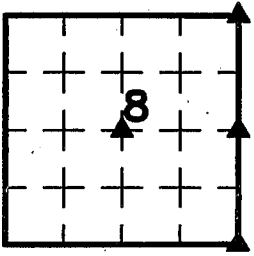


Scott A. Steinfadt LS, Ryken Engineering, 711 Park Avenue, Ackley, Iowa 50601 - Ph. 641-847-3273 - Fax 641-847-2303

UNITED STATES PUBLIC LAND SURVEY CORNER CERTIFICATE
OF

Land Survey Monuments situated in Section **8**, Township **88** North,
Range **11** West, of the Fifth Principal Meridian, **Black Hawk County, Iowa**,
Previously recorded in (see below) in County Recorder's Office
NE Corner, E $\frac{1}{4}$ Corner, SE Corner and Center - Not Applicable



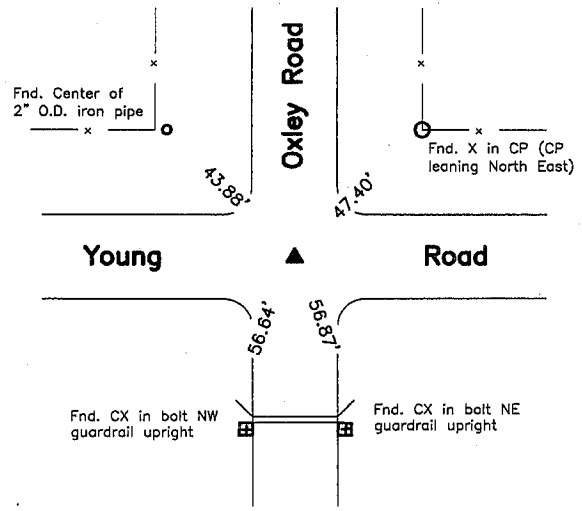
These corners were used for a survey in this section for Jaime Lynn and Robert Michael Foxen. Basis of bearing for this corner cert. can be found on the associated plot of survey filed in the Co. Rec's Office for this section.

Legend

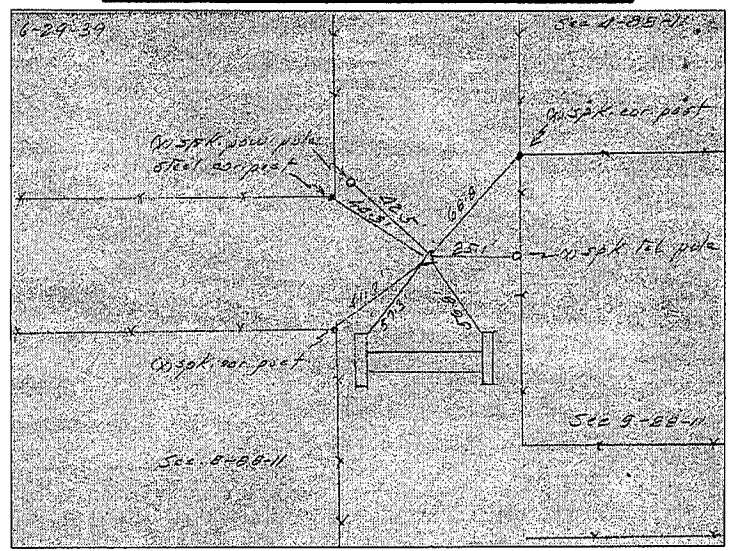
- | | | |
|---|--|------------------------------------|
| BC = Nail with Bottle Cap | ID = Inside Diameter | R/W = Iron ROW Rail |
| BP = Brace Post | OD = Outside Diameter | SFP = Steel 'T' Post |
| CP = Corner Post | PP = Power Pole | SW = Nail with Square Metal Washer |
| CMP = Corrugated Metal Pipe | PW = Nail with Plastic Washer | TP = Telephone Pedestal |
| CM = 4" Sq Concrete Monument with | RCP = Reinforced Concrete Pipe | TW = Nail with Round Metal Washer |
| 1/2"Ø iron rod in center (tie to rerod) | RH = Red Head (Nail in wire) | WFP = Wood Fence Post |
| CX = Cut 'X' | ROW = Right of Way | X = X Nails |
| GP = Gate Post | RW = Nail with Reflective Round Washer | |



NE Corner



CO ENGR'S RECORD TIES

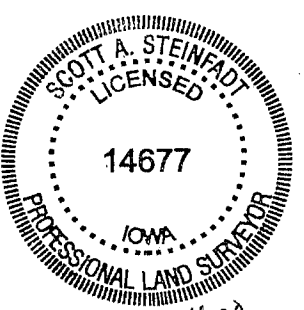


Monument Description, Remarks, and Plan View:

NE Corner - History of Corner =
1866, Apr. 6 - County Auditor's John Ball Survey Book Page 24 indicates usage of corner, but not type of monumentation.
1868, Aug. 5 - "Stone & Bone" per County Auditor's John Ball Survey Book Page 333.
No Date - County Engineer's Secondary Road Plans indicate usage of corner, but not type of monumentation.
1939, Jun. 29 - "Found Iron pipe 2" x 22" long set CM 12" underground" per County Engineers Fox Township Corner Ties Book #1 Page 20.
1971, Oct. 13 - "FOUND STD. CONC MONU; S.C.M. 45" deep; I.P. 2" deep" per Land Corner Survey for Iowa Highway Commission Proj. NO. F-520-6(7)--20-07.
1976, Sep. 1 - "Found Iron Pin 2" Deep over Std. Conc. Mon." per Iowa DOT District 2 Field Book Page 11.
1977, Jan. 25 - "Found iron pin 2" deep over std. conc. mon" per Corner Stone Survey made for IDOT Project FN-520-6(5)--21-07.
2003, Jul. 29 - "FOUND 1/2 INCH I.PIN W/OUT ID. CAP" per County Recorder's Book 2004 04259.
Previous County Engineer's ties indicate that corner is monumented with "Found Iron Pipe. 2" x 22" long. Set CM 12" deep" with ties as shown above.

Corner Recovery =
Searched area with a metal detector and excavated a 1.0'Ø x 0.7' deep hole at magnetic reading. Found a 1/2"Ø x 2.8' iron rerod, 0.4' deep. Tied out and removed rerod and probed down rerod hole and hit nothing to 5.0' deep. Probed on all sides of excavated hole and hit concrete monument on East side of rerod, 3.7' deep. Continued excavating to 3.8' deep and found a 4" x 4" brass capped concrete monument stamped '4', '5', '8' and '9', 3.7' deep. Top of rerod was over monument, rerod was leaning slightly and probe just missed top of monument. Set a pink plastic cased magnet on East side of concrete monument below top for locating purposes only. Monuments found are 1.5' North of apparent centerline of traveled surface of gravel road East - West and in apparent centerline of traveled surface of gravel road North - South. Location of monument found matches that of record, monuments found match that of record and record ties are within reason. Therefore, reset 1/2"Ø x 2.8' iron rerod over concrete monument to raise up monumentation and used it as the correct corner. Rerod is 0.4' deep. All ties are plumb distance.

This certificate is being prepared because there are no certificates on file for this corner.

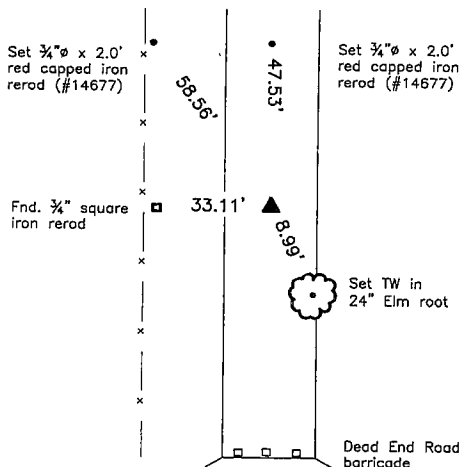


I hereby certify that this land surveying document was prepared and the related survey work was performed by me or under my direct personal supervision and that I am a duly licensed Land Surveyor under the laws of the State of Iowa.
Scott A Steinfadt PLS
SCOTT A. STEINFADT, LS
Date: 06/16/2009 License number: 14677
My license renewal date is December 31, 2010
Pages or sheets covered by this seal: 1, 2, & 3

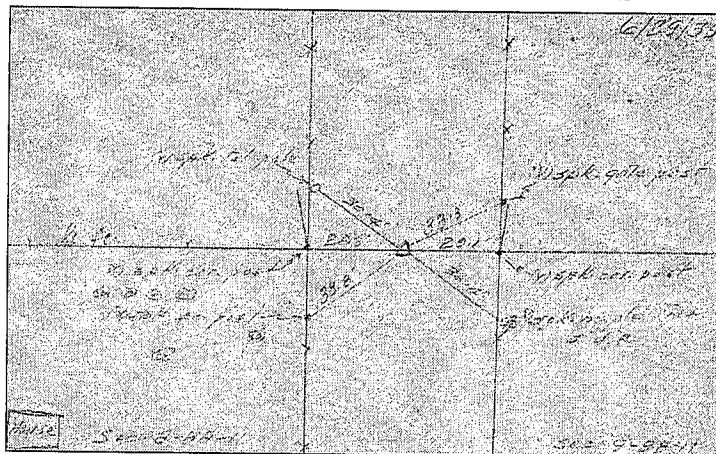
List Corners to be Indexed			
Corners	Section	Twp	Range
NE Corner	8	T88N	R11W
E $\frac{1}{4}$ Corner	8	T88N	R11W
SE Corner	8	T88N	R11W
Center	8	T88N	R11W

4 19255 24.00
(17.00)

E 1/4 Corner



CO ENGR'S RECORD TIES



Monument Description, Remarks, and Plan View:

E 1/4 Corner - History of Corner =

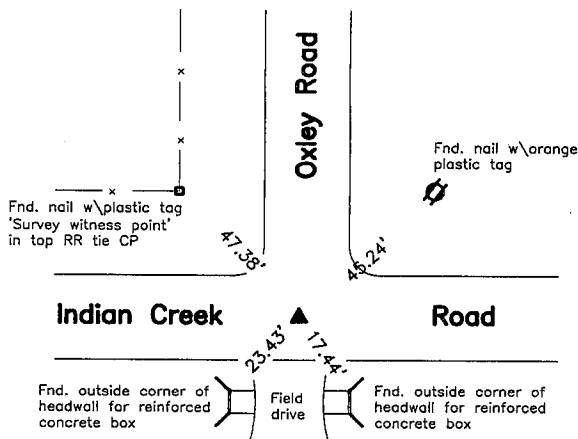
- 1866, Apr. 6 - County Auditor's John Ball Survey Book Page 24 indicates usage of corner, but not type of monumentation.
- 1868, Aug. 5 - "Old Mou" per County Auditor's John Ball Survey Book Page 333.
- No Date - County Engineer's Secondary Road Plans indicate usage of corner, but not type of monumentation.
- 1939, Jun. 29 - "Found Iron Bar 1/2" x 24" long Set C.M. 12" underground" per County Engineer's Fox Township Corner Ties Book #1, Page 47.
- 1971, Oct. 13 - "FOUND STD. CONC MONU; S.C.M. 31" deep; I.P. 2" deep" per Land Corner Survey for Iowa Highway Commission PROJ. NO. F-520-6(7)--20-07.
- 1976, Sep. 1 - "Found Iron Pin 2" Deep over Std Conc Mon" per Iowa DOT District 2 Office Field Book Page 10.
- 1977, Jan. 25 - "Found iron pin 2" deep over std. conc. mon" per Corner Stone Survey made for IDOT Proj. fn-520-6(5)--21-07.
- 1978, Apr. 7 - County Recorder's Deed Book 535 Page 929 indicates usage of corner but not type of monumentation.
- 1986, Apr. 3 - "SET PIPE W/ALUM CAP ORANGE POST N. SIDE" per Iowa DOT Proj. FN-520-6(21)--20-07 as-built plans.
- Previous Co Engr's ties indicate that corner is monumented with "Dug found nothing: chaining will not work - Set Iron Bar midway between fences" and "Found Iron Bar 1/2" x 24 Set CM 12" deep" with ties as shown above.

Corner Recovery =

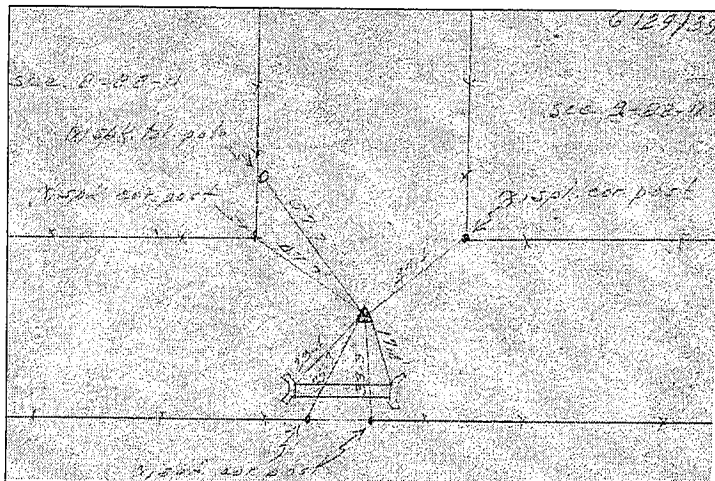
Searched area and found 1" O.D. aluminum capped iron pipe stamped 'IOWA - D.O.T. HWY. DIV. LAND CORNER DO NOT DISTURB', 0.3' exposed. Monument found is 34.0'± East of fenceline North - South. Location of monument found matches that of record and monument found matches that of record. Therefore, used 1" O.D. aluminum capped iron pipe 0.3' exposed as the correct corner. All ties are plumb distance unless indicated otherwise.

This certificate is being prepared because there are no certificates on file for this corner.

SE Corner



CO ENGR'S RECORD TIES



Monument Description, Remarks, and Plan View:

SE Corner - History of Corner =

- 1868, Aug. 5 - "Stone " per County Auditor's John Ball Survey Book Page 333.
- No Date - County Engineer's Secondary Road Plans indicate usage of corner, but not type of monumentation.
- 1939, Jun. 29 - "Found Lime stone 12" x 9" x 5" and Iron Bar 1" x 22" Long. Lowered evidence and set CM on top 12" deep" per County Engineer's Fox Township Corner Tie Book 1 Page 20.
- 1971, Oct. 13 - "FOUND STD. CONC MONU, S.C.M. 17" deep" per Land Corner Survey for Iowa Highway Commission PROJ. NO. F-520-6(7)--20-07.
- 1976, Sep. 1 - "Found Spike over STD Conc Mon." per IDOT District 2 Office Field Book Page 10.
- 1977, Jan. 25 - "Found spk. over std. conc. mon" per Corner Stone Survey made for Iowa DOT Proj. No. FN-520-6(5)--21-07.
- 1995, Aug. 8 - "FOUND NAIL" per County Recorder's Book 317 Page 024.

Previous County Engineer's ties indicate that corner is monumented with "Found lime stone 12" x 9" x 5" and Iron Bar 1" x 22" long. Lowered evidence and Set CM on top 12" deep and Stone & Iron Bar" on April 10 - 1933.

Current County Engineer's Ties indicate corner is monumented with "CM" with ties as shown above

Corner Recovery =

Searched area with a metal detector and excavated a 1.0'Ø x 0.5' deep hole at magnetic reading and found a bent 60d iron spike, 0.3' deep. Tied out straight portion of spike and removed. Continued excavating to 1.6' deep and found a 4" x 4" brass capped concrete monument stamped '8', '9', '16' and '17', 1.4' deep. Monument found is in apparent centerline of traveled surface of gravel road East - West and 2.0'± West of apparent centerline of traveled surface of gravel road North. Location of monument found matches that of record, monuments found match that of record and record ties are within reason. Therefore, set a 3/4"Ø x 1.1' aluminum capped iron rered (#14677) stamped '8', '9', '16', and '17' on center of brass capped concrete monument, 0.3' deep to raise up monumentation and used it as the correct corner. All ties are plumb distance.

This certificate is being prepared because there are no certificates on file for this corner.

Legend

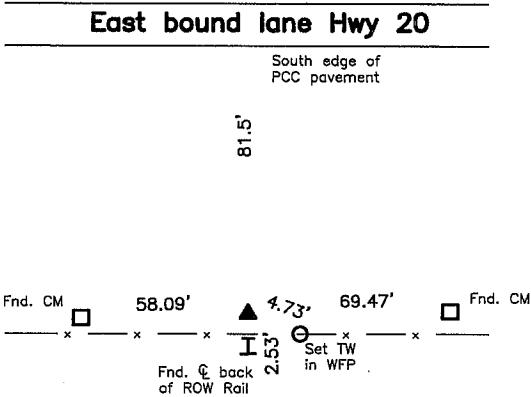
BC = Nail with Bottle Cap
BP = Brace Post
CP = Corner Post
CMP = Corrugated Metal Pipe
CM = 4" Sq Concrete Monument with
1/2"Ø iron rered in center (tie to rered)
CX = Cut 'X'
GP = Gate Post

ID = Inside Diameter
OD = Outside Diameter
PP = Power Pole
PW = Nail with Plastic Washer
RCP = Reinforced Concrete Pipe
RH = Red Head (Nail in wire)
ROW = Right of Way
RW = Nail with Reflective Round Washer

R/W = Iron ROW Rail
SFP = Steel "T" Post
SW = Nail with Square Metal Washer
TP = Telephone Pedestal
TW = Nail with Round Metal Washer
WFP = Wood Fence Post
X = X Nails



Center



Monument Description, Remarks, and Plan View:

Center. -- History of Corner =

- 1866, April. 6 - "Mound" per County Auditor's John Ball Survey Book Page 24.
- 1976, Sep. 23 - "Found Granite Stone 6" Deep" per Iowa DOT District 2 Office Field Book Page 9.
- 1977, Jan. 25 - "Found granite stone 6" deep" per Corner Stone Survey made for Iowa DOT Proj. No. FN-520-6(5)--21-07.
- 1977, Oct. 7 - County Recorder's Book 535 Pages 72, 613 and 964 indicates usage of corner but not type of monumentation.
- 1986, Apr. 3 - "GRANITE STONE 6" DEEP. ORANGE POST EAST SIDE" per Iowa DOT AS-BUILT Plans for Proj. No. FN-520-6(5)--35-07.

Previous and current Co Engr's ties do not indicate that corner is monumented.

Corner Recovery =

Searched area visually and excavated a 1.5'Ø x 1.2' deep hole at T-post with orange plastic sleeve and found a 9" x 12" bluish gray granite stone with high point, 0.9' deep matching IDOT reference ties. Set mag nail in high point of stone and placed a pink plastic cased magnet on North side of stone below high point for locating purposes only. Monument found is 81.5' South of South edge of PCC pavement East - West and 1.2' North of fenceline East - West. Location of monument found matches that of record, monument found matches that of record and record ties are within reason. Therefore, used Mag nail in high point of bluish gray granite stone as the correct corner. All ties are plumb distance.

This certificate is being prepared because there are no certificates on file for this corner.

Legend

BC = Nail with Bottle Cap	ID = Inside Diameter	R/W = Iron ROW Rail
BP = Brace Post	OD = Outside Diameter	SFP = Steel 'T' Post
CP = Corner Post	PP = Power Pole	SW = Nail with Square Metal Washer
CMP = Corrugated Metal Pipe	PW = Nail with Plastic Washer	TP = Telephone Pedestal
CM = 4" Sq Concrete Monument with	RCP = Reinforced Concrete Pipe	TW = Nail with Round Metal Washer
1/2"Ø Iron rerod in center (tie to rerod)	RH = Red Head (Nail in wire)	WFP = Wood Fence Post
CX = Cut 'X'	ROW = Right of Way	X = X Nails
GP = Gate Post.	RW = Nail with Reflective Round Washer	

