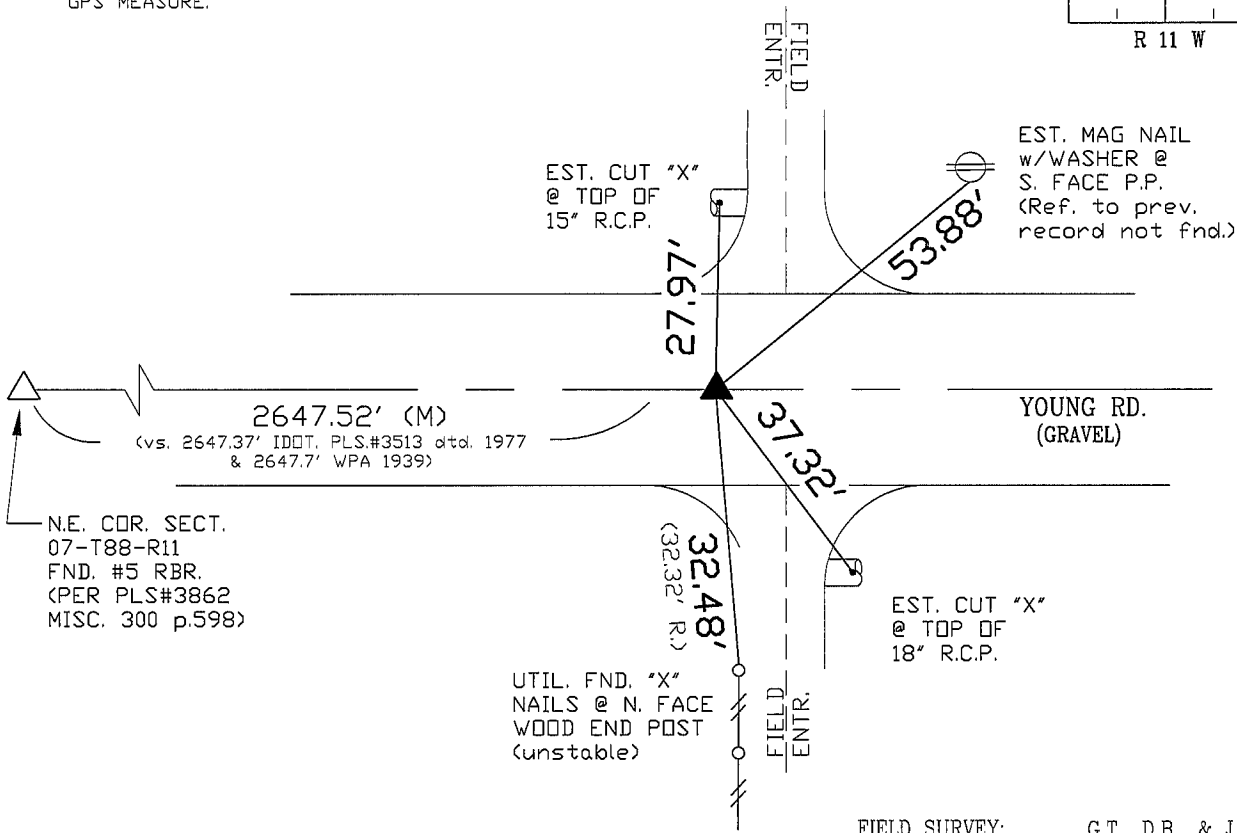
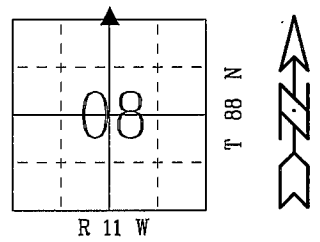


PREPARED BY: BLACK HAWK COUNTY ENGINEERS OFFICE
316 E. FIFTH STREET, ROOM 211 WATERLOO, IOWA 50703
PH.# (319) 833-3008
FAX.# (319) 833-3139
SLST 9-94
BHCO 03-09

UNITED STATES PUBLIC LAND SURVEY CORNER CERTIFICATE OF
Land Survey Monuments situated in Section 08 , Township 88 N ,
Range 11 W , of the Fifth Principal Meridian, BLACK HAWK County, Iowa.
Previously recorded in Misc. Book 300 , Page 600 , in County Recorder's Office.
(Show reason for preparing this certificate): The corner monument has been Replaced or Modified, per Ia. Code 355.11(1)(c)
(Evidence and detailed procedures used in establishing the corner position(s) and monumentation found or placed.)
Monument Description and Remarks: N. 1/4 COR. FOUND 5/8"x±30"L. REBAR BENT TO EAST AT ±8" DEEP. EXCAVATED TO ±12" DEEP TO PLUMB/TRUED REF. OF FND. RBR., AND TEMP. REFERENCED LOCATION. PULLED FND. BAR AND PROBED LOCATION, WITH NO SOLID OBJECT NOTED AT LOCATION TO ±36" DEEP vs. IDOT COR. STONE SURVEY DTD. 1977 CALLS FOR "FND. STD. C.M. AT 24" DEEP". RESET 5/8"x±32"L. REBAR w/2" DIA. ALUM. CAP STAMPED "BLACK HAWK CO. LAND CORNER" @ REF. LOCATION. CORNER RETIED UTILIZING PREV. FENCE END POST TO SOUTH PER PREVIOUS RECORD, WITH SAID END POST FOUND "UNSTABLE", AS DENOTED. ALSO ESTABLISHED TWO TIES ON FIELD ENTR. R.C.P.'s LOCATED BOTH N/S OF CORNER. CORNER UTILIZED FOR SECTIONLINE REFERENCE TO CANFIELD ROAD GEOM. THRU N.W.1/4-N.W.1/4 SAID SECTION.

NOTE: ALL DISTANCES PLUMB/HORIZ. (H.D.), "UNLESS DENOTED".
PLAN VIEW
"NOT TO SCALE"
BHco Hist. Ties: BK #1001 p.8-88-11
FIELD BOOK: BHco. #488 p.52
(Show a minimum of three reference ties to durable physical objects, relevant monuments and physical conditions that will enable recovery of the corner.)

- 1.) TIES PER EDM MEASURE IN NON-PRISM MODE, WHILE UTILIZING "INDIRECT" MEASURE.
- 2.) SECTION LINE MEASURE REFERS TO "LOCAL GROUND" PER RTK GPS MEASURE.



FIELD SURVEY: G.T., D.B., & J.Z. 6/1/09
PREPARED BY: G.T. & J.Z. 6/18/09

CERTIFICATION



I hereby certify that this land surveying document was prepared and the related survey work was performed by me or under my direct personal supervision and that I am a duly licensed Land Surveyor under the laws of the State of Iowa.
Geoffrey Allen Tinker 06/18/2009 (date)
Geoffrey Allen Tinker
License Number 15748
My license renewal date is December 31, 2010
Pages or sheets covered by this seal:
This Land Corner Certificate Only.

LIST CORNERS TO BE INDEXED

Corner	Section -	Township -	Range
N. 1/4 Cor.	08	88 N	11 W
S. 1/4 Cor.	05	88 N	11 W

INDEX OF ABBREVIATIONS

(M) = "Measured" Dimension "NP" = Reflectorless EDM Meas.
(P) = "Platted" Dimension "MLM" = Indirect Measure
(R) = "Record" Dimension "CM" = Concrete Monument
(C) = "Calculated" Dimension "SM" = Survey Marker Spike/Tag
"IGS" = Iowa Geodetic Survey
"WPA" = Works Progress Admin. Survey
"G" = per George Miller Survey (BHco Surveyor 1858-1860)
"S" = per John Ball Survey (BHco Surveyor 1866-1891)
"N" = per Nathan Barber Survey (BHco Surveyor 1908-1931)