

UNITED STATES PUBLIC LAND SURVEY CORNER CERTIFICATE

SLSI 9-90

OF

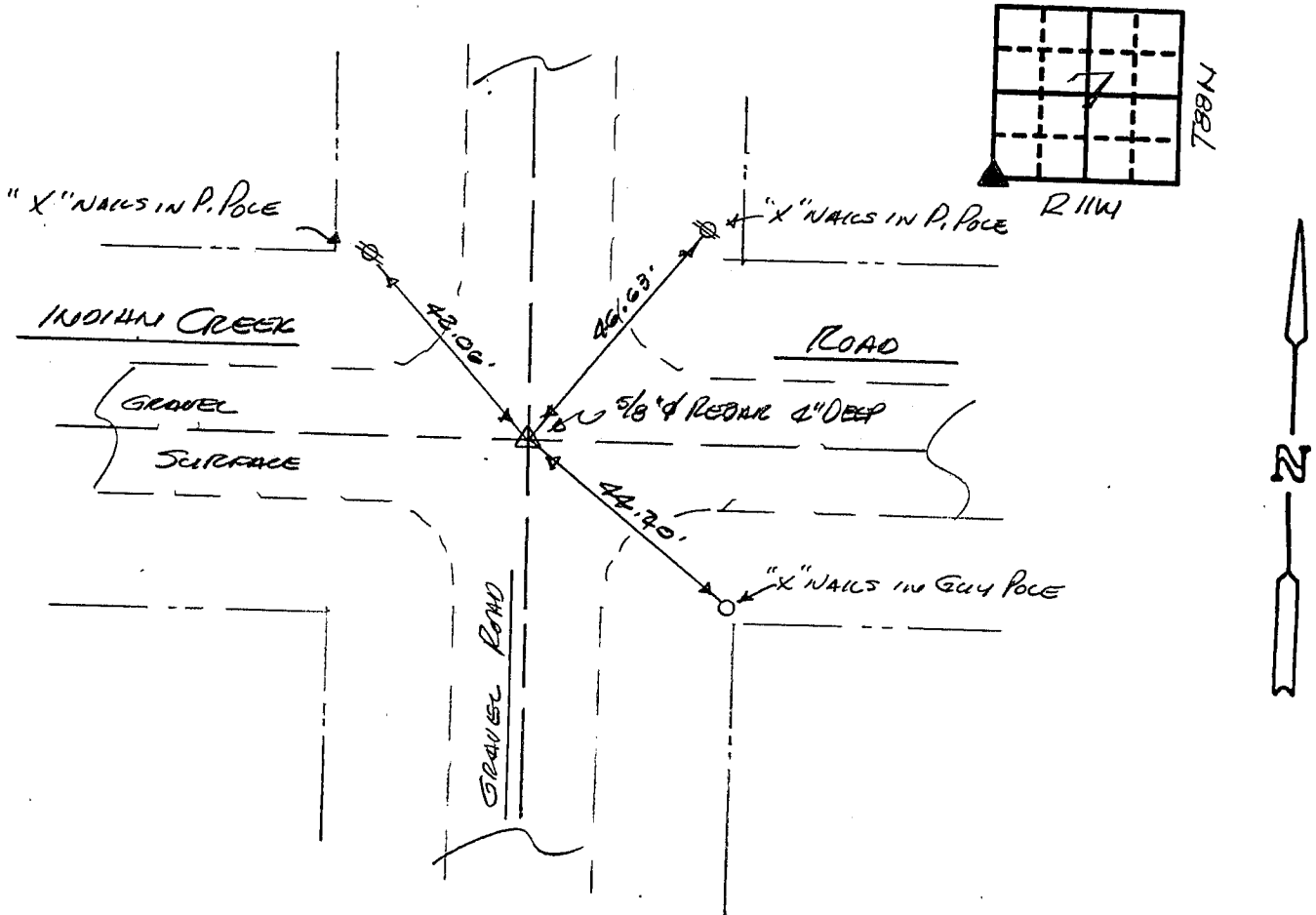
Land Survey Monuments situated in Section 7, Township 58N, Range 11W, of the Fifth Principal Meridian, PLACE HAWK County, Iowa.
Previously recorded in N/A in County Recorder's Office.

(Show reason for preparing this certificate, the evidence and detailed procedures used in establishing the corner positions and monumentation found or placed.)

Monument Description and Remarks: FOUND 5/8" Ø RED OAK 4" DEEP IN GRAVEL ROAD
USING IOWA D.O.T. TIES CORNERSTONE SURVEY PROJ. I-380-7(19)-01-07
10-5-1977.

PLAN - VIEW

(Show a minimum of three reference ties to durable physical objects, relevant monuments and physical conditions that will enable recovery of the corner.)



I hereby certify that the survey work was completed and this certificate was prepared by me or under my direct personal supervision and that I am a duly registered land surveyor under the laws of the state of Iowa.

Signature: F. William King
Name typed or printed: F. William King
Date: 8-30-1991 Reg. No. 8033



SEAL

Corners	List Corners to be Indexed	Section	Twp	Range
500	7	58N	11W	

MISC. BK. 297 p. 575