

REC FEE _____
E FEE _____
TRAN FEE _____
REV FEE _____
GF _____
gm

Doc ID: 005604420001 Type: GEN
Recorded: 10/23/2014 at 02:49:13 PM
Fee Amt: \$0.00 Page 1 of 1
Black Hawk County Iowa
JUDITH A MCCARTHY RECORDER
File **2015-00007072**

PREPARED BY: BLACK HAWK COUNTY ENGINEERS OFFICE
316 E. FIFTH STREET, ROOM 211 WATERLOO, IOWA 50703

PH.# (319) 833-3008
FAX.# (319) 833-3139

SLSI 9-94
BHCO 03-09

UNITED STATES PUBLIC LAND SURVEY CORNER CERTIFICATE OF
Land Survey Monuments situated in Section 7, Township 88 N,
Range 11 W, of the Fifth Principal Meridian, BLACK HAWK County, Iowa.
Previously recorded in Misc. Book N/A, Page N/A, in County Recorder's Office.
(Show reason for preparing this certificate): There is No Certificate for the corner on file with County Recorder, per
Ia. Code 355.11(1)(a).

(Evidence and detailed procedures used in establishing the corner position(s) and monumentation found or placed.)

Monument Description and Remarks: E. 1/4 COR.

FOUND IADOT 3" DIA. ALUMINUM MON. MARKED "IOWA D.O.T. WITH RECORD CORNER
REFERENCED AS "FOUND IDOT" PER PLAT OF SURVEY IN MISC. Bk. 300 p. 411 (1992).
CORNER ALSO REFERENCED PER IADOT CORNER STONE SURVEY (PLS #3513) OF HIGHWAY
520 PROJECT (DATED 1-25-1977), AS "FOUND IRON PIN IN A.C.C. PVMT. (PRIOR TO HWY.
#20). ACCEPTED CORNER AS FND., TIED AND FILED FOR PUBLIC RECORD, AS PART OF
R.O.W. ACQUISITION AND PROJECT SURVEY FOR BHCO. CANFIELD RD. RECONSTRUCTION
PROJECT (DEPT. #534).

PLAN VIEW

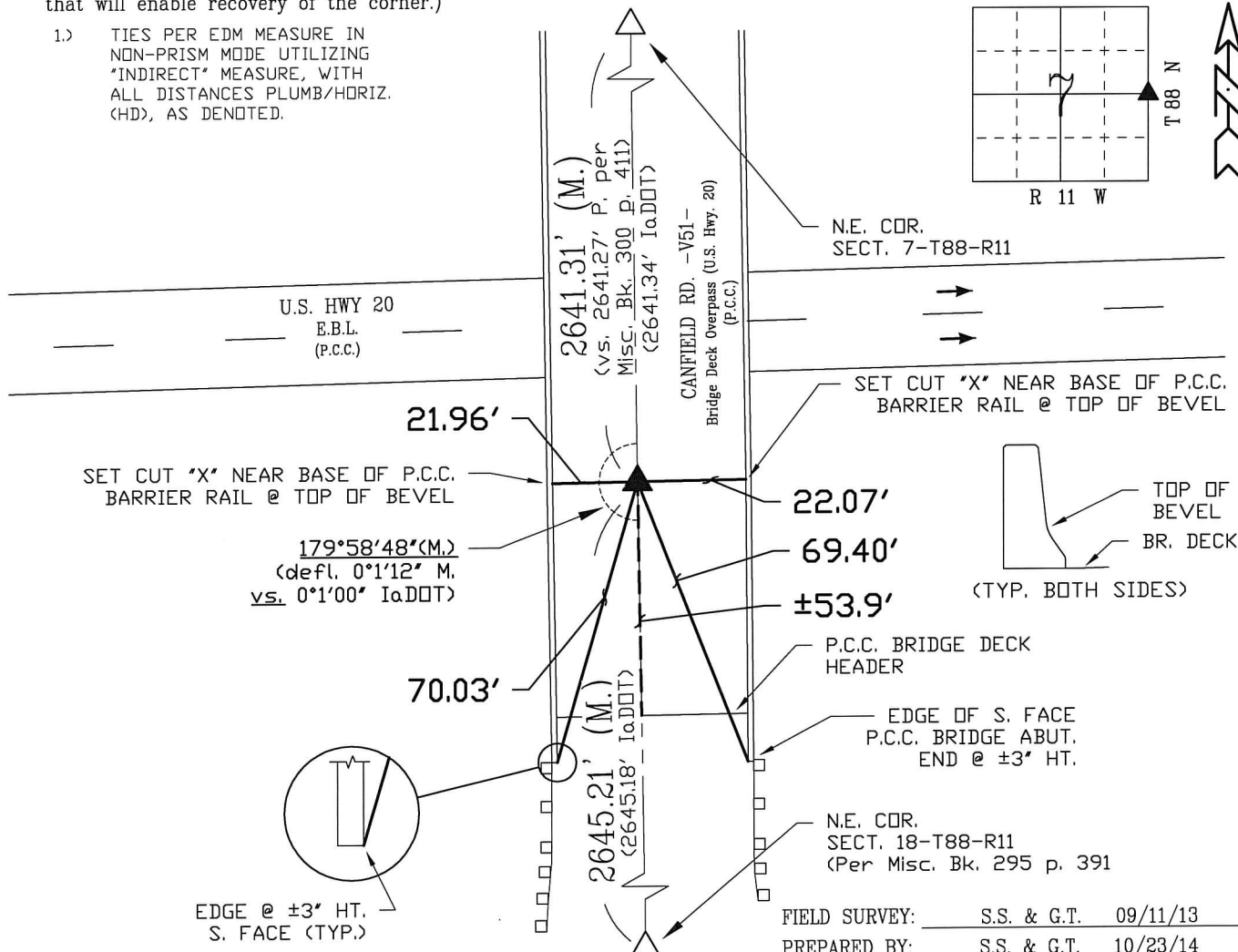
"NOT TO SCALE"

BHco Hist. Ties: BK. #1001 p.7 88-11

FIELD BOOK: Ties per Topcon 7003i #Z0115

(Show a minimum of three reference ties to durable physical objects, relevant monuments and physical conditions
that will enable recovery of the corner.)

- 1.) TIES PER EDM MEASURE IN
NON-PRISM MODE UTILIZING
"INDIRECT" MEASURE, WITH
ALL DISTANCES PLUMB/HORIZ.
(CHD), AS DENOTED.



CERTIFICATION



I hereby certify that this land surveying document was
prepared and the related survey work was performed by me
or under my direct personal supervision and that I am a
duly licensed Land Surveyor under the laws of the State of
Iowa.

Geoffrey Allen Tinker 10/23/2014
Geoffrey Allen Tinker (date)

License Number 15748

My license renewal date is December 31, 2014

Pages or sheets covered by this seal:

This Land Corner Certificate Only.

LIST CORNERS TO BE INDEXED

Corner	Section -	Township -	Range
E. 1/4 Cor.	7	88 N	11 W
W. 1/4 Cor.	8	88 N	11 W

INDEX OF ABBREVIATIONS

(M) = "Measured" Dimension "NP" = Reflectorless EDM Meas.
(P) = "Platted" Dimension "MLM" = Indirect Measure
(R) = "Record" Dimension "CM" = Concrete Monument
(C) = "Calculated" Dimension "SM" = Survey Marker Spike/Tag
"IGS" = Iowa Geodetic Survey "PK" = PK/MAG Nail Brand Style
"WPA" = Works Progress Admin. Survey
"Q" = per George Miller Survey (BHco Surveyor 1858-1860)
"S" = per John Ball Survey (BHco Surveyor 1866-1891)
"N" = per Nathan Barber Survey (BHco Surveyor 1908-1931)