

Kyle J. Helland, 1107 Technology Parkway, Cedar Falls, Iowa 50613-6951, (319)-266-0161

UNITED STATES PUBLIC LAND SURVEY CORNER CERTIFICATE
OF

LAND SURVEY MONUMENTS SITUATED IN SECTION NO. 7, TOWNSHIP NO. 88 NORTH, RANGE NO. 11 WEST OF THE FIFTH PRINCIPAL MERIDIAN, BLACK HAWK COUNTY, IOWA.
PREVIOUSLY RECORDED IN N/A

(SHOW REASON FOR PREPARING THIS CERTIFICATE, THE EVIDENCE AND DETAILED PROCEDURES USED IN ESTABLISHING THE CORNER POSITIONS AND MONUMENTATION FOUND OR PLACED.)

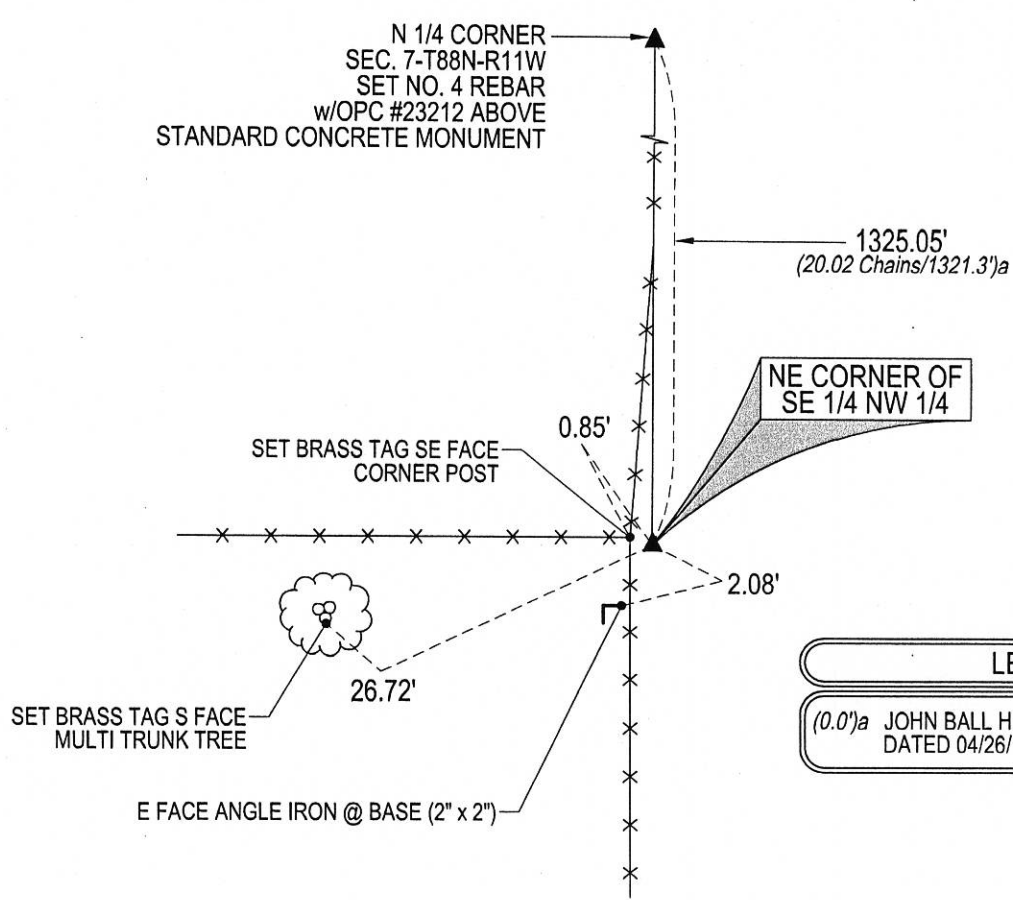
MONUMENT DESCRIPTION AND REMARKS:

NO USPLSCC ON FILE. SURVEY COMPLETED IN THE NE 1/4 OF SEC. 7-T88N-R11W.

NE CORNER SE 1/4 OF THE NW 1/4: JOHN BALL HISTORICAL SURVEY PG 25 DATED 04/26/1866 & 06/21-22/1889 CALLS [STONE & STAKE]. SEARCHED AREA FOUND YELLOW GRANITE BOULDER 10"Ø FLUSH @ SE CORNER OF CORNER POST. SAID STONE IS IN LINE WITH FENCE RUNNING WEST, CUT "X" ON HIGH POINT UTILIZED AS CORNER.

PLAN VIEW

(SHOW A MINIMUM OF THREE REFERENCE TIES TO DURABLE PHYSICAL OBJECTS, RELEVANT MONUMENTS AND PHYSICAL CONDITIONS THAT WILL ENABLE RECOVERY OF THE CORNER.)



(BEARINGS ARE ASSUMED)

HES

HELLAND ENGINEERING & SURVEYING, LTD.
1107 Technology Parkway
Cedar Falls, Iowa 50613-6955
(319)-266-0161

SHINER = 4d. NAIL & 1 5/16"Ø METAL SHINER
BRASS TAG = 4d. NAIL & 13/16"Ø BRASS TAG
OPC = PLASTIC CAP (O=ORANGE, R=RED, Y=YELLOW)
(00') RECORDED AS
DRAWN BY: CDR
FILE NAME: 18-254-34.DWG

PROFESSIONAL LAND SURVEYOR
KYLE J. HELLAND
23212
IOWA

I hereby certify that this land surveying document was prepared and the related survey work was performed by me or under my direct personal supervision and that I am a duly licensed Professional Land Surveyor under the laws of the State of Iowa.
Kyle J. Helland 12/31/2019
Kyle J. Helland
License Number 23212
My license renewal date is December 31, 2019.
All pages or sheets are covered by this seal except:

LIST CORNERS TO BE INDEXED

CORNER	SECTION	TOWNSHIP	RANGE
NE COR. SE 1/4 NW 1/4	7	88N	11W
SE COR. NE 1/4 NW 1/4	7	88N	11W
SW COR. NW 1/4 NE 1/4	7	88N	11W
NW COR. SW 1/4 NE 1/4	7	88N	11W