

Jeffrey P. Helland, 1107 Technology Parkway, Cedar Falls, Iowa 50613-6951, (319)-266-0161

UNITED STATES PUBLIC LAND SURVEY CORNER CERTIFICATE OF

LAND SURVEY MONUMENTS SITUATED IN SECTION NO. 6, TOWNSHIP NO. 88 NORTH, RANGE NO. 11 WEST OF THE FIFTH PRINCIPAL MERIDIAN, BLACK HAWK COUNTY, IOWA.
PREVIOUSLY RECORDED IN N/A

(SHOW REASON FOR PREPARING THIS CERTIFICATE, THE EVIDENCE AND DETAILED PROCEDURES USED IN ESTABLISHING THE CORNER POSITIONS AND MONUMENTATION FOUND OR PLACED.)

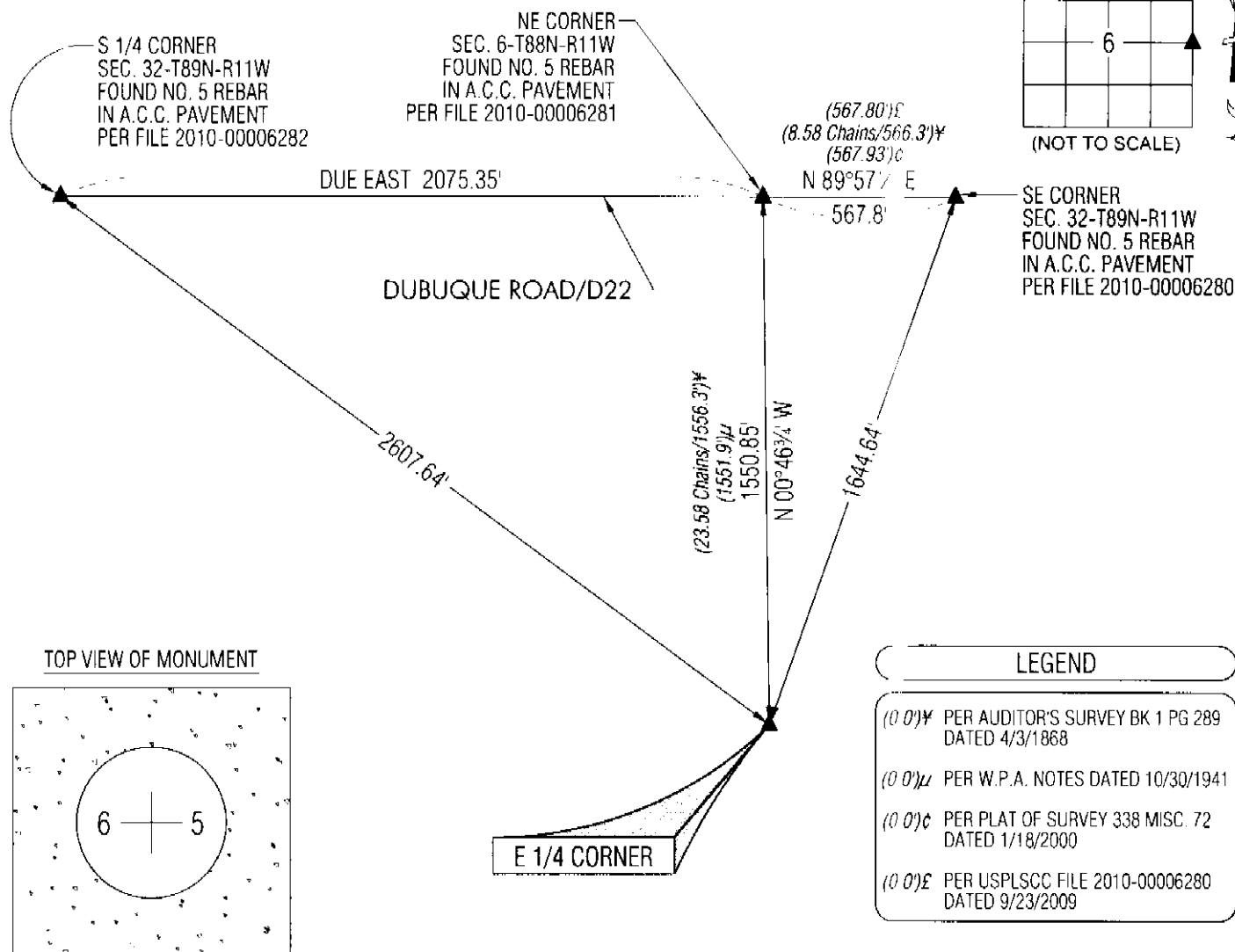
MONUMENT DESCRIPTION AND REMARKS:

NO USPLSCC ON RECORD. SURVEY COMPLETED IN THE NE FRL 1/4 OF SEC. 6-T88N-R11W AND NW FRL 1/4 OF SEC. 5-T88N-R11W.

E 1/4 CORNER: AUDITOR'S SURVEYOR RECORD BOOK 1 PAGE 289 DATED 4/3/1868 BY J. BALL CALLS FOR [OLD MOUND]. W.P.A. CHAINING NOTES (DATED 10/30/1941) CALLS FOR [EST STONE 13+19.2' N. OF 1/4 1/4 STONE & 252.5' E. OF FC R N. & S.]. CORNER FALLS IN CULTIVATED FIELD, ON RANDOM LINE STARTED EXCAVATION. FOUND STANDARD CONCRETE MONUMENT WITH BRASS CAP (0.7'± DEEP). SET NO. 4 REBAR ON NORTH SIDE 0.1'± BELOW TOP OF SAID CONCRETE MONUMENT FOR MAGNETIC DETECTION. NO GERMANE, DURABLE PHYSICAL OBJECTS TO REFERENCE.

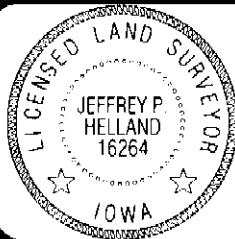
PLAN VIEW

(SHOW A MINIMUM OF THREE REFERENCE TIES TO DURABLE PHYSICAL OBJECTS, RELEVANT MONUMENTS AND PHYSICAL CONDITIONS THAT WILL ENABLE RECOVERY OF THE CORNER.)



HELLAND ENGINEERING & SURVEYING, LTD.
1107 Technology Parkway
Cedar Falls, Iowa 50613-6951
(319)-266-0161

SHINER = 8D NAIL & 1 5/16" Ø METAL SHINER
BRASS TAG = 8D NAIL & 13/16" Ø BRASS TAG
OPC = PLASTIC CAP (O=ORANGE, R=RED, Y=YELLOW)
(00') RECORDED AS FILE NAME: 11-163C1.DWG



I hereby certify that this land surveying document was prepared and the related survey work was performed by me or under my direct personal supervision and that I am a duly licensed Land Surveyor under the laws of the State of Iowa.
Jeffrey P. Helland 5/5/11
Jeffrey P. Helland
License Number 16264
My license renewal date is December 31, 2011.
All pages or sheets are covered by this seal except:

LIST CORNERS TO BE INDEXED			
CORNER	SECTION	TOWNSHIP	RANGE
E 1/4 CORNER	6	88N	11W
W 1/4 CORNER	5	88N	11W

File Number: 2013-00010507 Seq: 1