

Michael R. Fagle, P.L.S.

AECOM, 501 Sycamore St., Suite 222, Waterloo, Iowa 50703

I-319-232-6531

UNITED STATES PUBLIC LAND SURVEY CORNER CERTIFICATE OF

Land Survey Monuments situated in Section 5, Township 88 North,
Range 11 West, of the Fifth Principal Meridian, BLACK HAWK
County, Iowa. Previously recorded in OLD TIE BOOKS IN THE BHC ENGINEER'S OFFICE
in County Recorder's Office. (Book, Page, Document Number, etc.)

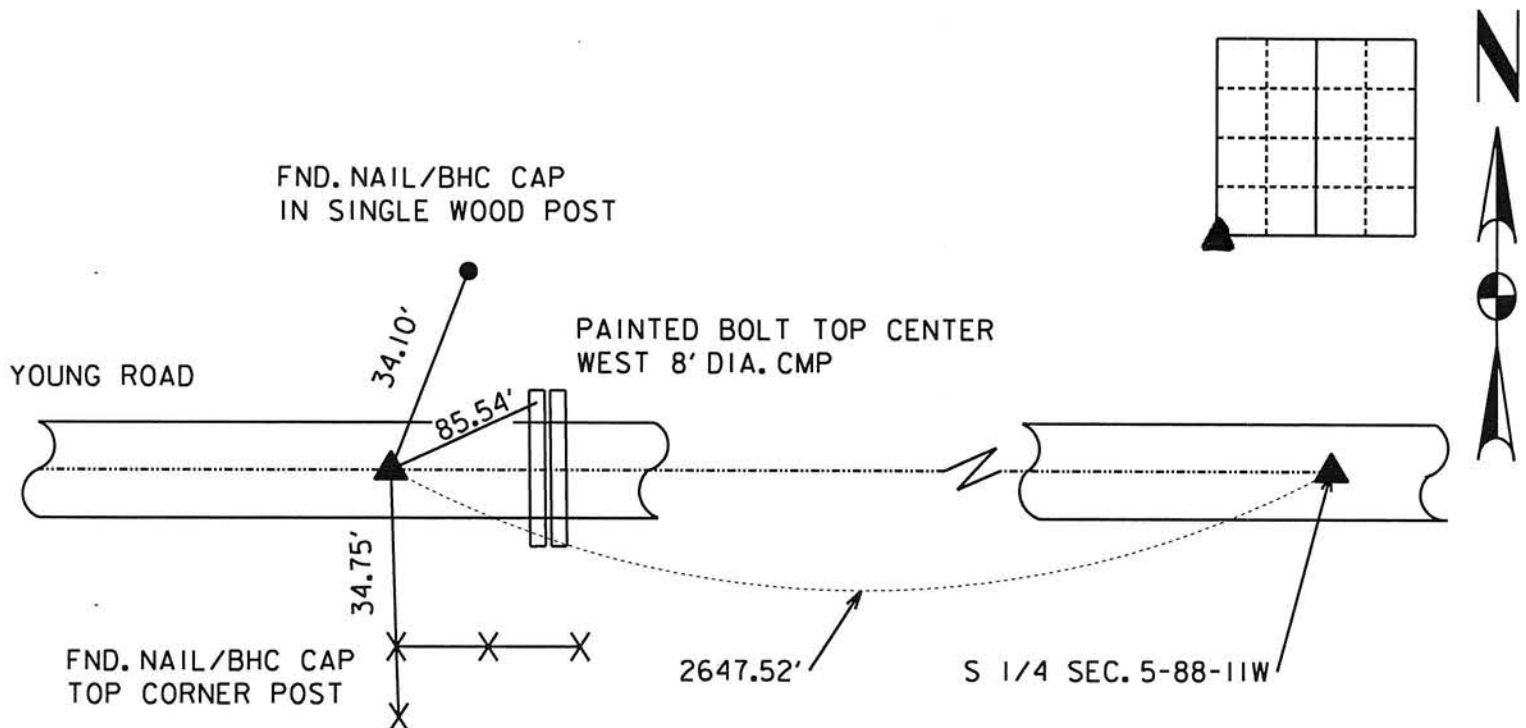
(Show reason for preparing this certificate, the evidence and detailed procedures used in establishing the corner positions and monumentation found or placed.)

Monument Description and Remarks: _____

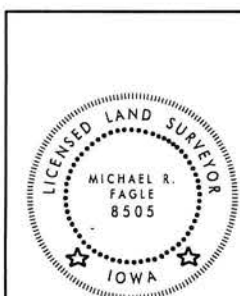
FOUND NO. 4 REBAR 3" DEEP. _____

PLAN - VIEW

(Show a minimum of three reference ties to durable physical objects, relevant monuments and physical conditions that will enable recovery of the corner.)



SOUTHWEST CORNER OF SECTION 5-88-11W FOUND NO. 4 REBAR 3" DEEP.



I hereby certify that this Land Surveying document was prepared by me or under my direct personal supervision and that I am a duly Licensed Land Surveyor under the laws of the State of Iowa.

Michael R. Fagle 8-24-2014
MICHAEL R. FAGLE Date

License number 8505

My license renewal date is December 31, 2014

Pages or sheets covered by this seal:
THIS SHEET

List Corners to be Indexed

Corners	Section	Twp	Range
SOUTHWEST CORNER	5	T 88 N	R 11 W