

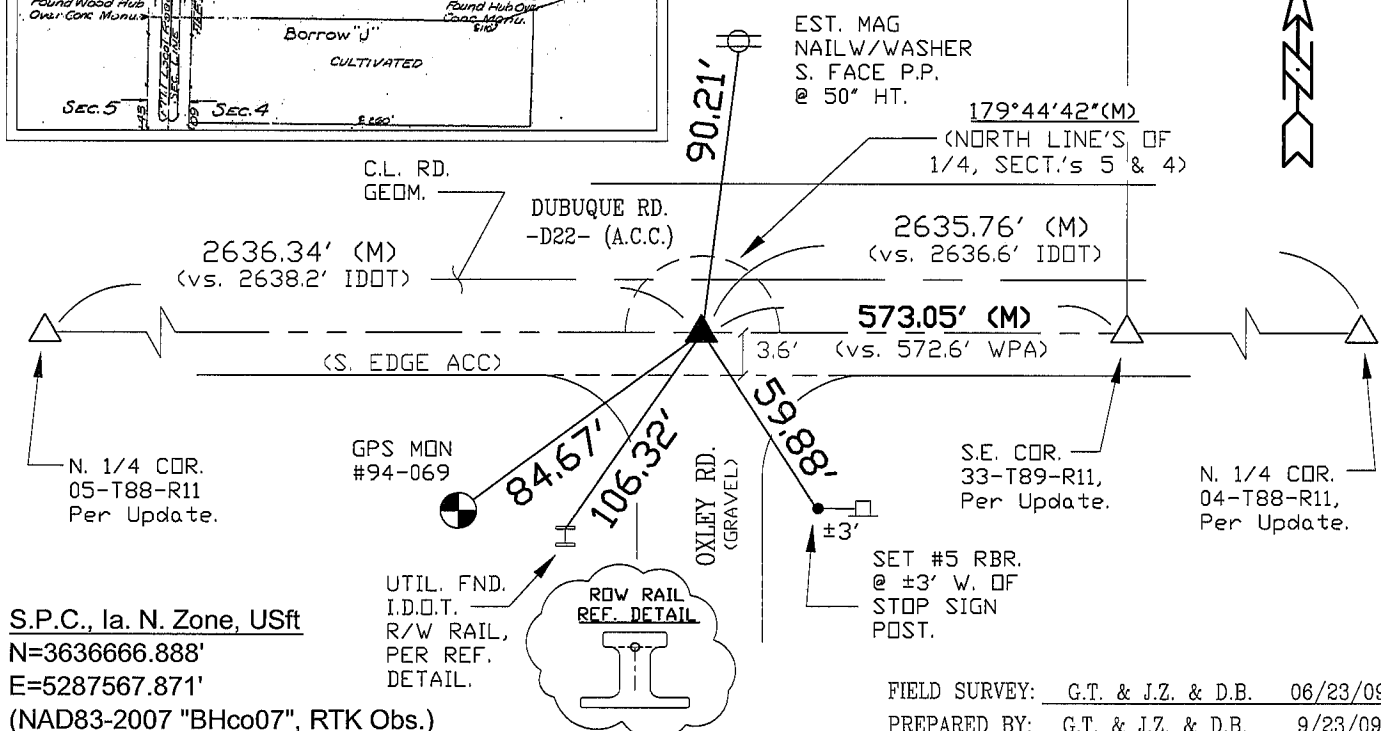
PH.# (319) 833-3008 SLSI 9-94  
FAX.# (319) 833-3139 CERT 03-09

(Show reason for preparing this certificate): The corner monument has been Replaced or Modified, per Ia. Code 355.11(1)(c)

(Evidence and detailed procedures used in establishing the corner position(s) and monumentation found or placed.)  
**Monument Description and Remarks:** **N.E. COR.** FOUND 2½"Ø 1αDOT ALUM. CAP IN ACC CORE HOLE, WITH NO CURRENT CERTIFICATE ON RECORD. CLEANED CORE HOLE DOWN ±5" Dp. THRU EXIST. ACC OVERLAY TO PCC PAVEMENT, AND **FOUND** LEAD PLUG IN PCC PAVEMENT. TEMP. REF. w/RTK GPS (TWO LINE w/WT. AVG.), AND MILLED 2" EXIST. ACC OVERLAY & ADDED 5" H.M.A./A.C.C. OVERLAY. CORNER **RESET** WITH #5 (5/8") x ±7" L. REBAR PER RTK GPS REF., AND RETIED. LAND CORNER IS LOC. @ 3.6' NORTH OF SOUTH EDGE ACC/HMA (FILLET/M.L. PAVING EDGE) & ALIGNED w/± C.L. S.R. SOUTH. CORNER CALC.'S @ "3.24' SOUTH" OF CALC.'ED TRUE CORNER (CLOSING) ONTO SOUTH LINE OF S.E. 1/4 SECTION 33-T89-R11, AS OBSERVED.

BHco Hist. Ties: BK. #1001 p.05 88-11  
FIELD BOOK: BHco. #488 p.46 (#1012)

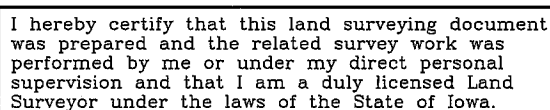
- 



S.P.C., Ia. N. Zone, USft  
N=3636666.888'  
E=5287567.871'  
(NAD83-2007 "BHco07",

FIELD SURVEY: G.T. & J.Z. & D.B. 06/23/09  
PREPARED BY: G.T. & J.Z. & D.B. 9/23/09

## LIST CORNERS TO BE INDEXED



Geoffrey Allen Tinker (date) 09/23/2009

License Number 15748  
My license renewal date is December 31, 2010  
Pages or sheets covered by this seal:  
This Land Corner Certificate On

<u>Corner</u>	<u>Section</u> -	<u>Township</u> -	<u>Range</u>
N.E. Cor.	05	88 N	11 W
N.W. Cor.	04	88 N	11 W

## INDEX OF ABBREVIATIONS

(M) = "Measured" Dimension                      "NP" = Reflectorless EDM Meas.  
(P) = "Platted" Dimension                      "MLM" = Indirect Measure  
(R) = "Recorded" Dimension                      "CM" = Concrete Monument  
(C) = "Calculated" Dimension                      "SM" = Survey Marker Spike/Tag  
  
"IGS" = Iowa Geodetic Survey  
"WPA" = Works Progress Admin. Survey  
"G" = per George Miller Survey (BHC Surveyor 1858-1860)  
"B" = per John Ball Survey (BHC Surveyor 1866-1891)  
"N" = per Nathan Barber Survey (BHC Surveyor 1906-1931)