

MISC  
INDEX *✓*  
MARGIN  
PROOF  
COMPARE

BLACK HAWK COUNTY IOWA:SS  
FILED FOR RECORD Jul 26, 1999 AT  
3:00 P.M. AND RECORDED IN BOOK 335  
OF MISC PAGE 182  
*Patricia J. Lass* RECORDER  
FEE 1-5.00/  
HELLAND ENGINEERING & SURVEYING, LTD.

1965

Paul H. Helland, 1107 Technology Parkway, Cedar Falls, Iowa 50613-6951, (319)-266-0161

UNITED STATES PUBLIC LAND SURVEY CORNER CERTIFICATE  
OF

LAND SURVEY MONUMENTS SITUATED IN SECTION NO. 5, TOWNSHIP NO. 88 NORTH, RANGE  
NO. 11 WEST OF THE FIFTH PRINCIPAL MERIDIAN, BLACK HAWK COUNTY, IOWA.  
PREVIOUSLY RECORDED IN BOOK           , PAGE           .

(SHOW REASON FOR PREPARING THIS CERTIFICATE, THE EVIDENCE AND DETAILED PROCEDURES USED IN ESTABLISHING THE CORNER POSITIONS  
AND MONUMENTATION FOUND OR PLACED.)

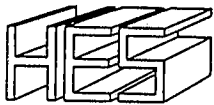
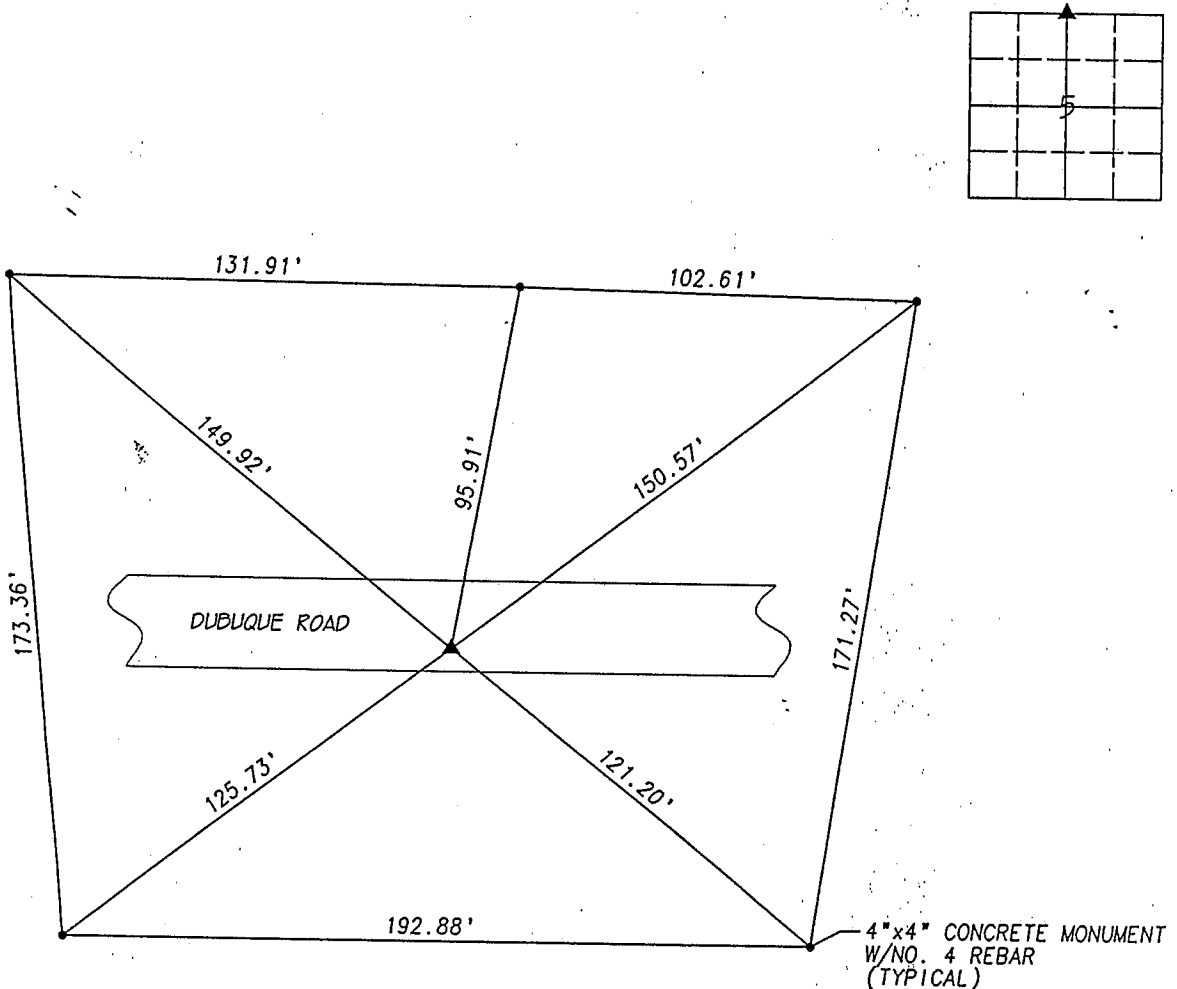
MONUMENT DESCRIPTION AND REMARKS:

SURVEY DONE IN SW 1/4 OF SEC. 32-T89N-R11W

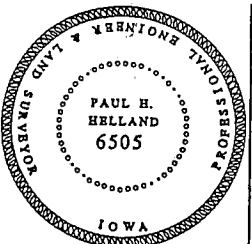
N 1/4 CORNER: FOUND I.D.O.T. MARKER IN A.C.C. PAVEMENT 5.9' SOUTH OF CENTERLINE OF DUBUQUE ROAD.

PLAN VIEW

(SHOW A MINIMUM OF THREE REFERENCE TIES TO DURABLE PHYSICAL OBJECTS, RELEVANT MONUMENTS AND PHYSICAL CONDITIONS THAT WILL  
ENABLE RECOVERY OF THE CORNER.)



HELLAND ENGINEERING & SURVEYING, LTD.  
1107 Technology Parkway  
Cedar Falls, Iowa 50613-6951  
(319)-266-0161



I hereby certify that this land surveying document was prepared  
and the related survey work was performed by me or under my  
direct personal supervision and that I am a duly licensed Land  
Surveyor under the laws of the State of Iowa.  
*Paul H. Helland*  
Paul H. Helland  
License Number 6505  
My license renewal date is December 31, 1999.  
All pages or sheets are covered by this seal except:

FILE NAME: 99-142C2.GCD  
LIST CORNERS TO BE INDEXED  
CORNER SECTION TOWNSHIP RANGE  
N 1/4 CORNER 5 88N 11W

BOOK **335** PAGE **182**