

PREPARED BY: BLACK HAWK COUNTY ENGINEERS OFFICE  
316 E. FIFTH STREET, ROOM 211 WATERLOO, IOWA 50703

PH.# (319) 833-3008  
FAX.# (319) 833-3139  
SLSI 9-94  
CERT 03-09

UNITED STATES PUBLIC LAND SURVEY CORNER CERTIFICATE OF  
Land Survey Monuments situated in Section 04, Township 88 N,  
Range 11 W, of the Fifth Principal Meridian, BLACK HAWK County, Iowa.  
Previously recorded in Misc. Book 323, Page 018, in County Recorder's Office.  
(Show reason for preparing this certificate): The corner monument has been Replaced or Modified, per Ia. Code 355.11(1)(c)

(Evidence and detailed procedures used in establishing the corner position(s) and monumentation found or placed.)  
Monument Description and Remarks: N.E. COR. FOUND 2 1/2" Ø IDOT ALUM. CAP IN  
ACC CORE HOLE (STABLE), PER CURRENT RECORD. CORNER ALSO RECORDED IN MISC. BK.  
325 p.260 AS "FND. IDOT MON. IN ACC PAVEMENT". NO FURTHER SEARCH THRU EXIST. ±5"  
DP. ACC OVERLAY TO PCC PAVEMENT CONDUCTED. TEMP. REF. w/RTK GPS (TWO LINE  
w/WT. AVG.), THEN MILLED 2" EXIST. ACC PAVEMENT & ADDED 5" H.M.A./A.C.C. OVERLAY.  
CORNER RESET WITH #5 (5/8") x ±7" L. REBAR PER RTK GPS REF. AND RETIED. LAND  
CORNER IS LOC. ±2.1' NORTH OF SOUTH EDGE (MAINLINE EXT.) ACC/HMA & ALIGNED ± WITH  
C.L. S.R. SOUTH. CORNER CALC.'S @ "0.20' SOUTH" OF CALC.'ED TRUE CORNER (CLOSING)  
ONTO SOUTH LINE OF S.E. 1/4 SECTION 34-T89-R11, AS OBSERVED.

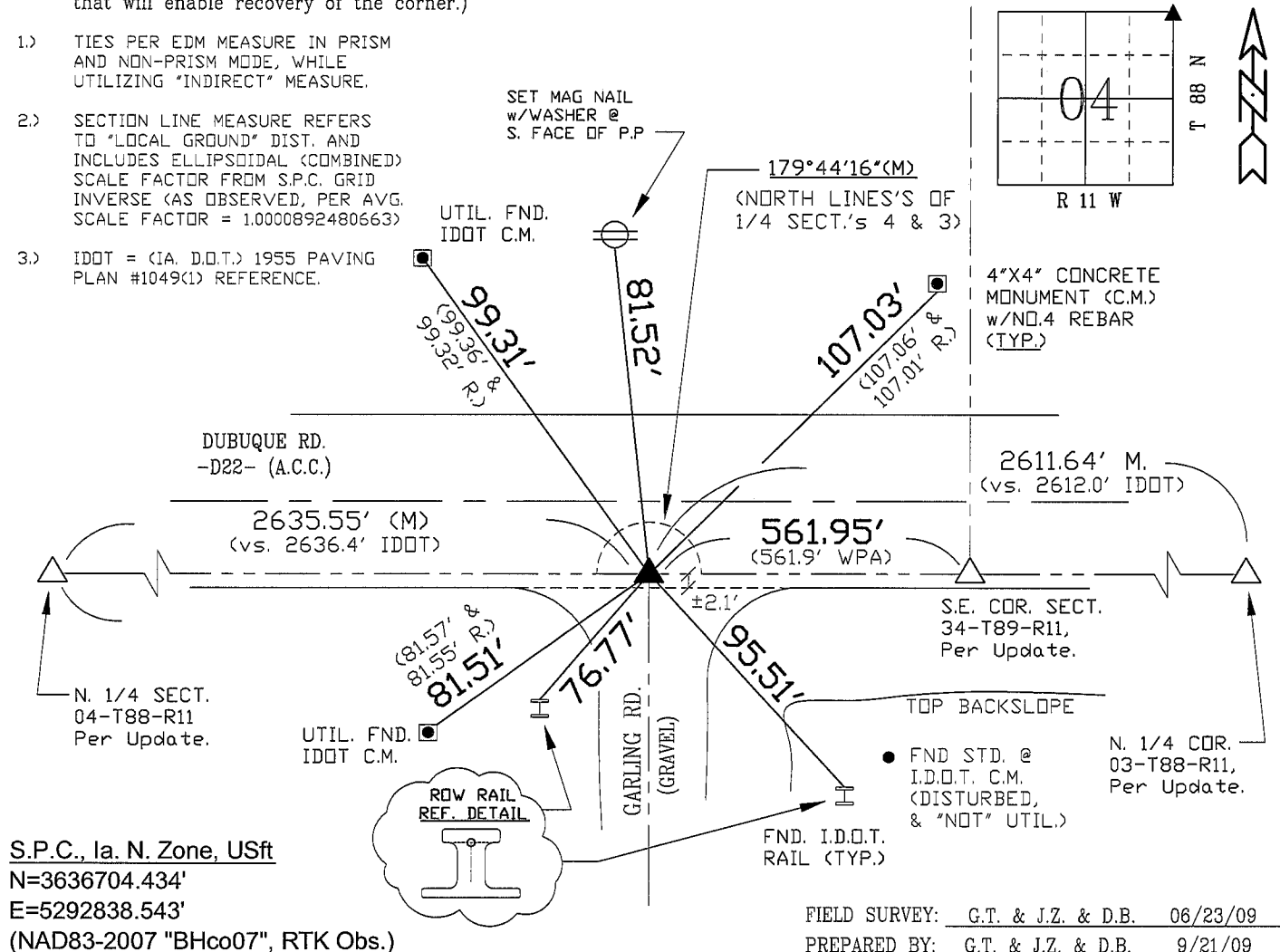
NOTE: ALL DISTANCES PLUMB/HORIZ.  
(H.D.), "UNLESS DENOTED".

### PLAN VIEW

BHco Hist. Ties: BK. #1001 p.04 88-11  
FIELD BOOK: BHco. #488 p.47 (#1016)

(Show a minimum of three reference ties to durable physical objects, relevant monuments and physical conditions  
that will enable recovery of the corner.)

- 1.) TIES PER EDM MEASURE IN PRISM  
AND NON-PRISM MODE, WHILE  
UTILIZING "INDIRECT" MEASURE.
- 2.) SECTION LINE MEASURE REFERS  
TO "LOCAL GROUND" DIST. AND  
INCLUDES ELLIPSOIDAL (COMBINED)  
SCALE FACTOR FROM S.P.C. GRID  
INVERSE (AS OBSERVED, PER AVG.  
SCALE FACTOR = 1.0000892480663)
- 3.) IDOT = (IA. D.O.T.) 1955 PAVING  
PLAN #1049(1) REFERENCE.



S.P.C., Ia. N. Zone, USft  
N=3636704.434'  
E=5292838.543'  
(NAD83-2007 "BHco07", RTK Obs.)

FIELD SURVEY: G.T. & J.Z. & D.B. 06/23/09  
PREPARED BY: G.T. & J.Z. & D.B. 9/21/09

### CERTIFICATION



I hereby certify that this land surveying document  
was prepared and the related survey work was  
performed by me or under my direct personal  
supervision and that I am a duly licensed Land  
Surveyor under the laws of the State of Iowa.  
*Geoffrey Allen Tinker* 09/23/2009  
Geoffrey Allen Tinker (date)  
License Number 15748  
My license renewal date is December 31, 2010  
Pages or sheets covered by this seal:  
This Land Corner Certificate Only.

### LIST CORNERS TO BE INDEXED

Corner	Section -	Township -	Range
N.E. Cor.	04	88 N	11 W
N.W. Cor.	03	88 N	11 W

### INDEX OF ABBREVIATIONS

(M) = "Measured" Dimension  
(P) = "Platted" Dimension  
(R) = "Record" Dimension  
(C) = "Calculated" Dimension  
"IGS" = Iowa Geodetic Survey  
"WPA" = Works Progress Admin. Survey  
"φ" = per George Miller Survey (BHco Surveyor 1858-1860)  
"B" = per John Ball Survey (BHco Surveyor 1866-1891)  
"N" = per Nathan Barber Survey (BHco Surveyor 1908-1931)  
"NP" = Reflectorless EDM Meas.  
"MLM" = Indirect Measure  
"CM" = Concrete Monument  
"SM" = Survey Marker Spike/Tag