

UNITED STATES PUBLIC LAND SURVEY CORNER CERTIFICATE

OF

Land Survey Monuments situated in Section 3, Township 88N, Range 11 W, of the Fifth Principal Meridian, BLACK HAWK County, Iowa.

~~Previously recorded in~~ \_\_\_\_\_ ~~in County Recorder's Office.~~

(book, page, document number, etc.)

(Show reason for preparing this certificate, the evidence and detailed procedures used in establishing the corner positions and monumentation found or placed.)

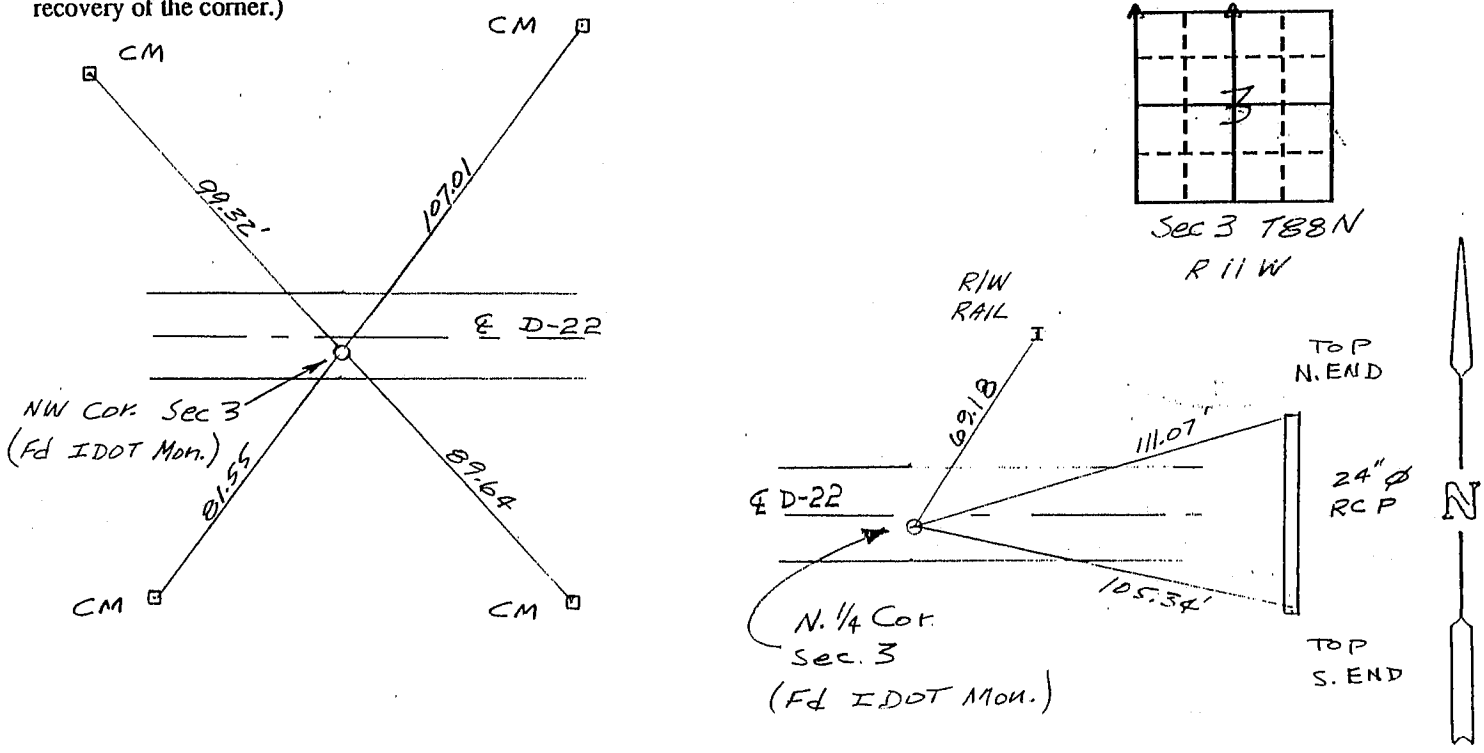
Monument Description and Remarks: No corner certificate on file.

NW Corner Section 3 - Fd IDOT Mon. in ACC pavement

N 1/4 Corner Section 3 - Fd IDOT Mon. in ACC pavement

PLAN - VIEW

(Show a minimum of three reference ties to durable physical objects, relevant monuments and physical conditions that will enable recovery of the corner.)



I hereby certify that the survey work was completed and this land surveying document was prepared by me or under my direct personal supervision and that I am a duly registered land surveyor under the laws of the state of Iowa.

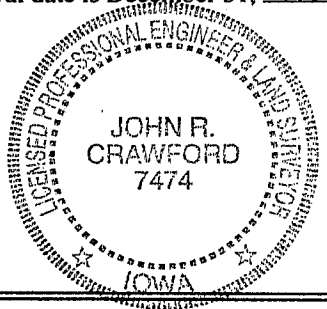
Signature: John R. Crawford

Name typed or printed: John R. Crawford, R.L.S.

Date: 4/29/97 Reg. No. 7474

My registration renewal date is December 31, 1997

SEAL



Corners	List Corners to be Indexed		
	Section	Twp	Range
NW	3	88N	11 W
N 1/4	3	88N	11 W