

File **2010-00006271**

PH.# (319) 833-3008  
FAX.# (319) 833-3139

SLSI 9-94  
CERT 03-09

Land Survey Monuments situated in Section 03 , Township 88 N ,  
Range 11 W , of the Fifth Principal Meridian, BLACK HAWK County, Iowa.  
Previously recorded in MISC. Book 325 , Page 260 , in County Recorder's Office.

(Show reason for preparing this certificate): The corner monument has been Replaced or Modified, per Ia. Code 355.11(1)(c)

(Evidence and detailed procedures used in establishing the corner position(s) and monumentation found or placed.)

Monument Description and Remarks: N. 1/4 COR. FOUND DATED PK™ NAIL WITH ORANGE RIBBON IN ACC CORE HOLE, PER CURRENT RECORD. NO FURTHER SEARCH THROUGH EXIST. ±5" Dp. ACC OVERLAY TO PCC PAVEMENT CONDUCTED. TEMP. REF. w/RTK GPS (TWO LINE w/WT. AVG.), THEN MILLED 2" EXIST. ACC PAVEMENT & ADDED 5" H.M.A./A.C.C. OVERLAY. CORNER RESET WITH #5 (5/8") x ±7" L. REBAR PER RTK GPS REF., AND RETIED. LAND CORNER IS LOC. ±8.2' SOUTH OF NEW C.L. ACC/HMA PAVING JOINT, AND CORNER CALC.'S @ "0.19' SOUTH" OF CALC.'ED TRUE CORNER (CLOSING) ONTO SOUTH LINE OF S.W. 1/4 SECTION 35-T89-R11, AS OBSERVED.

NOTE: ALL DISTANCES PLUMB/HORIZ.  
(H.D.), "UNLESS DENOTED".

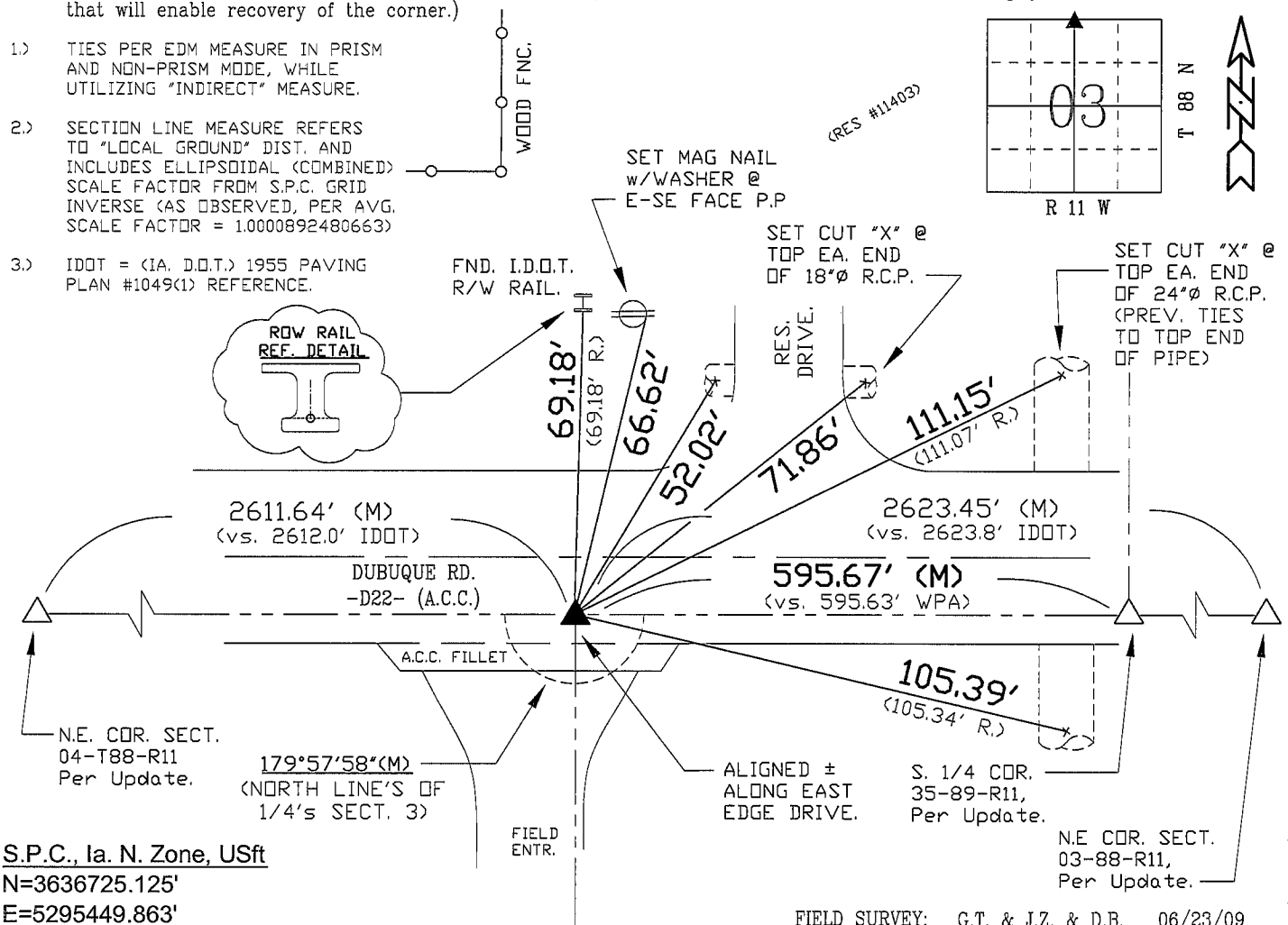
"NOT TO SCALE"

BHco Hist. Ties: BK. #1001 p.03 88-11

FIELD BOOK: BHco. #488 p.47 (#1018)

(Show a minimum of three reference ties to durable physical objects, relevant monuments and physical conditions that will enable recovery of the corner.)

- 1.) TIES PER EDM MEASURE IN PRISM AND NON-PRISM MODE, WHILE UTILIZING 'INDIRECT' MEASURE.
- 2.) SECTION LINE MEASURE REFERS TO "LOCAL GROUND" DIST. AND INCLUDES ELLIPSOIDAL (COMBINED) SCALE FACTOR FROM S.P.C. GRID INVERSE (AS OBSERVED, PER AVG. SCALE FACTOR = 1.0000892480663)
- 3.) IDOT = (IA. D.O.T.) 1955 PAVING PLAN #1049(1) REFERENCE.



S.P.C., Ia. N. Zone, USft

N=3636725.125'

E=5295449.863'

(NAD83-2007 "BHco07", RTK Obs.)

FIELD SURVEY: G.T. & J.Z. & D.B. 06/23/09

PREPARED BY: G.T. & J.Z. & D.B. 9/21/09

I hereby certify that this land surveying document was prepared and the related survey work was performed by me or under my direct personal supervision and that I am a duly licensed Land Surveyor under the laws of the State of Iowa.



*Geoffrey C Tinker* 09/23/2009  
Geoffrey Allen Tinker (date)

License Number 15748

My license renewal date is December 31, 2010

Pages or sheets covered by this seal:

This Land Corner Certificate Only.

LIST CORNERS TO BE INDEXED

<u>Corner</u>	<u>Section</u>	<u>Township</u>	<u>Range</u>
N. 1/4 Cor.	03	88 N	11 W

## INDEX OF ABBREVIATIONS

INDEX OF ABBREVIATIONS

(M) = "Measured" Dimension	"NP" = Reflectless EDM Meas.
(P) = "Platted" Dimension	"MLM" = Indirect Measure
(R) = "Record" Dimension	"CM" = Concrete Monument
(C) = "Calculated" Dimension	"SM" = Survey Marker Spike/Tag
"IGS" = Iowa Geodetic Survey	
"WPA" = Works Progress Admin. Survey	
"φ" = per George Miller Survey (BHco Surveyor 1858-1860)	
"ts" = per John Ball Survey (BHco Surveyor 1866-1891)	
"N" = per Nathan Barber Survey (BHco Surveyor 1908-1931)	