

*Patricia L. Liss*

BLACK HAWK COUNTY RECORDER

HELLAND ENGINEERING &amp; SURVEYING LTD

Jeffrey P. Helland, 1107 Technology Parkway, Cedar Falls, Iowa 50613-6951, (319)-266-0161

UNITED STATES PUBLIC LAND SURVEY CORNER CERTIFICATE  
OFLAND SURVEY MONUMENTS SITUATED IN SECTION NO. 1, TOWNSHIP NO. 88 NORTH, RANGE  
NO. 11 WEST OF THE FIFTH PRINCIPAL MERIDIAN, BLACK HAWK COUNTY, IOWA.

PREVIOUSLY RECORDED IN \_\_\_\_\_.

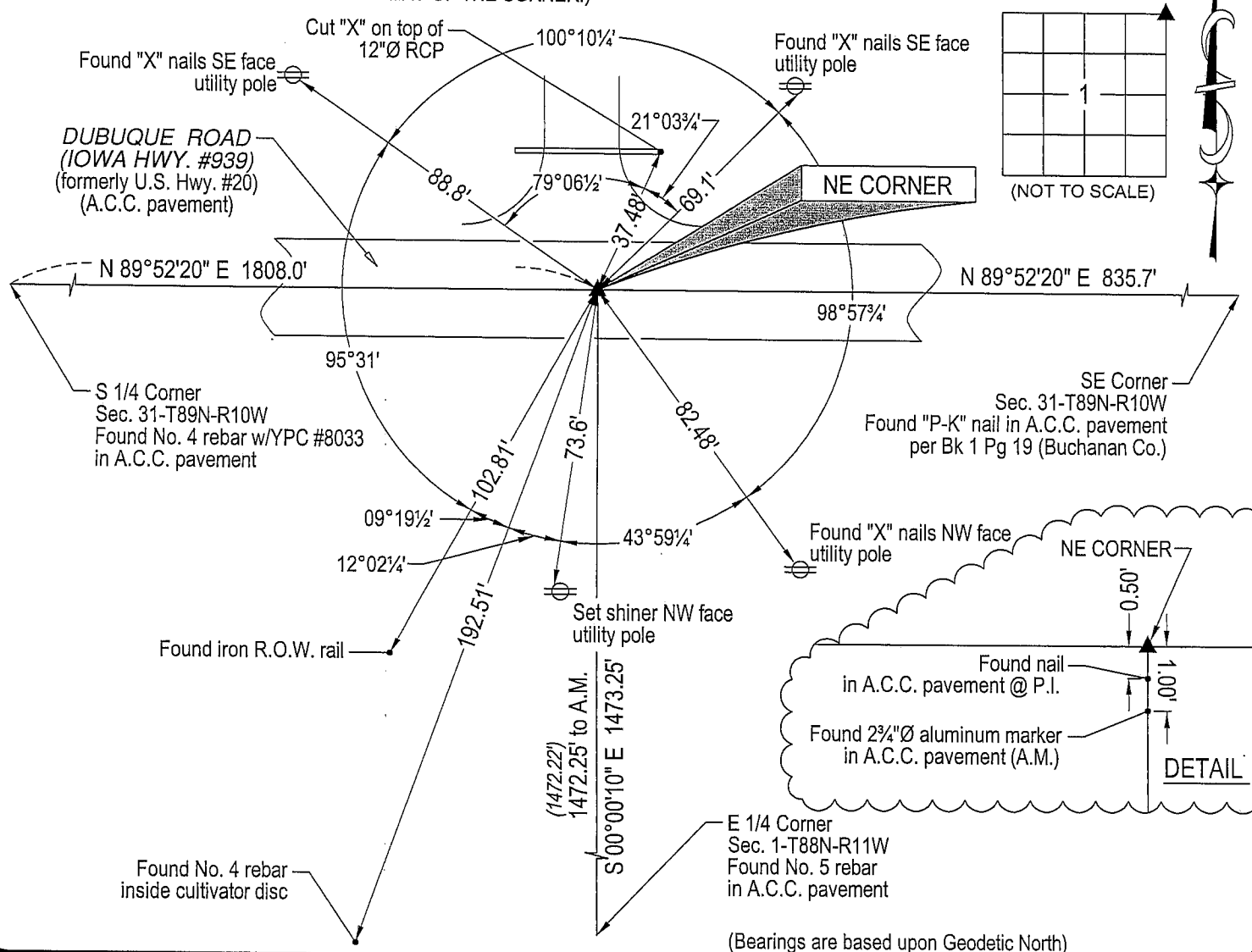
(SHOW REASON FOR PREPARING THIS CERTIFICATE, THE EVIDENCE AND DETAILED PROCEDURES USED IN ESTABLISHING THE  
CORNER POSITIONS AND MONUMENTATION FOUND OR PLACED.)

## MONUMENT DESCRIPTION AND REMARKS:

No USPLSCC on file. Survey completed in the NEFRL 1/4 of Sec. 1-T88N-R11W.

→ NE CORNER: Found  $2\frac{3}{4}$ "Ø aluminum marker (no markings) in A.C.C. pavement set by Iowa Highway Commission. Corner as found in not on the line closed upon. Set "cotton gin spike" in A.C.C. pavement at true point of intersection (Section 5-41 *Manual of Surveying Instructions* 1973) on line between the S 1/4 Corner of Sec. 31-T89N-R10W and the SE Corner of Sec. 31-T89N-R10W. Said  $2\frac{3}{4}$ "Ø aluminum marker is now known as AM (for amended monument).

## PLAN VIEW

(SHOW A MINIMUM OF THREE REFERENCE TIES TO DURABLE PHYSICAL OBJECTS, RELEVANT MONUMENTS AND PHYSICAL  
CONDITIONS THAT WILL ENABLE RECOVERY OF THE CORNER.)

(Bearings are based upon Geodetic North)



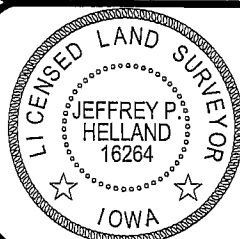
HELLAND ENGINEERING &amp; SURVEYING, LTD.

1107 Technology Parkway  
Cedar Falls, Iowa 50613-6951  
(319)-266-0161

shiner = 8d nail &amp; 1 15/16"Ø metal shiner

(00') Recorded As

File Name: 05-259c1.dwg

I hereby certify that this land surveying document was prepared  
and the related survey work was performed by me or under my  
direct personal supervision and that I am a duly licensed Land  
Surveyor under the laws of the State of Iowa.*Jeffrey P. Helland 9/19/05*Jeffrey P. Helland  
License Number 16264

My license renewal date is December 31, 2005.

All pages or sheets are covered by this seal except:

## LIST CORNERS TO BE INDEXED

CORNER	SECTION	TOWNSHIP	RANGE
NE CORNER	1	88N	11W