

File **2010-00006291**

PREPARED BY: BLACK HAWK COUNTY ENGINEERS OFFICE  
316 E. FIFTH STREET, ROOM 211 WATERLOO, IOWA 50703

PH.# (319) 833-3008  
FAX.# (319) 833-3139

SLSI 9-94  
CERT 03-09

## UNITED STATES PUBLIC LAND SURVEY CORNER CERTIFICATE OF

Land Survey Monuments situated in Section 01 , Township 88 N ,  
Range 11 W , of the Fifth Principal Meridian, BLACK HAWK County, Iowa.  
Previously recorded in FEE Book 2006 , Page 09272 , in County Recorder's Office.

P. #1  
OF 2

(Show reason for preparing this certificate): The corner monument has been Replaced or Modified, per Ia. Code 355.11(1)(c)

(Evidence and detailed procedures used in establishing the corner position(s) and monumentation found or placed.)

Monument Description and Remarks: N. 1/4 COR. FOUND 2½"Ø 10DOT ALUM. CAP IN ACC CORE HOLE & COTTON GIN SPIKE @ ±1' N. OF ALUM. CAP, BOTH PER CURRENT RECORD. CLEANED CORE HOLE TO ±4" Dp THRU ACC OVERLAY TO PCC PAVEMENT, w/NO FURTHER MONUMENTATION FOUND IN PCC. TEMP. REF. BOTH w/RTK GPS (TWO LINE w/WT. AVG.), THEN MILLED 2" EXIST. ACC PAVEMENT & ADDED 5" H.M.A./A.C.C. OVERLAY. TRUE CORNER (CLOSING) HEREIN TIED FOR RECORD, WITH "BOTH" CORNER'S BEING **RESET** WITH #5 (5/8") x ±7" L. REBAR PER RTK GPS REF.'S, AND RETIED. TRUE CORNER (T.C.) IS LOC. @ 0.6' N. OF C.L. ACC/HMA PAVING JOINT, WITH AMENDED CORNER (A.M.) LOC. 1.01' SOUTH OF TRUE CORNER & 0.41' SOUTH OF C.L. ACC/HMA PAVING JOINT. "TRUE CORNER" VERIFIED ON-LINE (CLOSING) ONTO S. LINE OF S.W. 1/4 SECT. 31-T89-R10, AS OBSERVED & PER CUR. RECORD.

NOTE: ALL DISTANCES PLUMB/HORIZ.  
(H.D.), "UNLESS DENOTED".

### PLAN VIEW

"NOT TO SCALE"

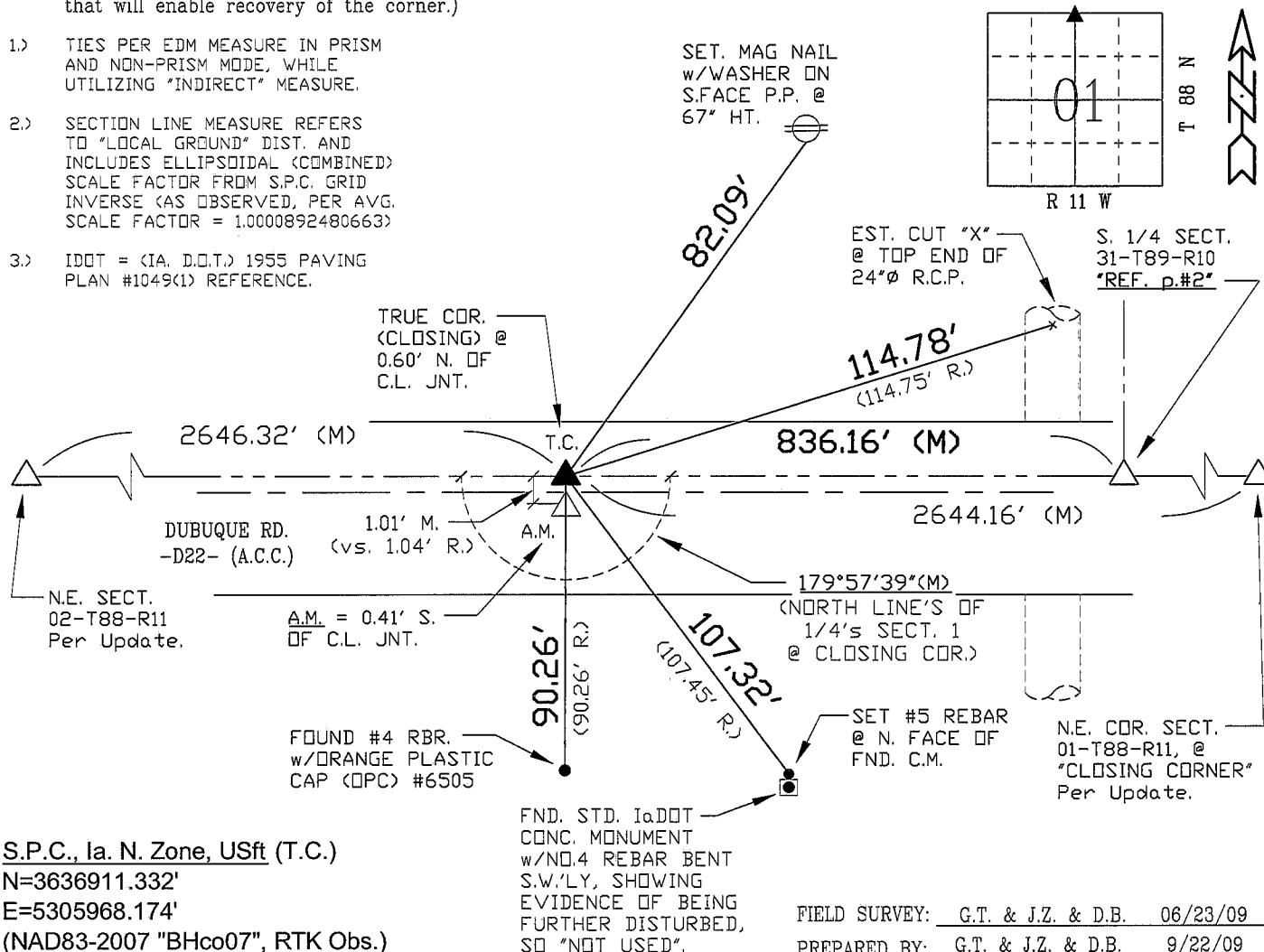
BHco Hist. Ties: BK. #1001 p.01 88-11

FIELD BOOK: BHco. #488 p.48 (#1026B)

(Show a minimum of three reference ties to durable physical objects, relevant monuments and physical conditions that will enable recovery of the corner.)

- 1.) TIES PER EDM MEASURE IN PRISM AND NON-PRISM MODE, WHILE UTILIZING "INDIRECT" MEASURE.
- 2.) SECTION LINE MEASURE REFERS TO "LOCAL GROUND" DIST. AND INCLUDES ELLIPSOIDAL (COMBINED) SCALE FACTOR FROM S.P.C. GRID INVERSE (AS OBSERVED, PER AVG. SCALE FACTOR = 1.0000892480663)
- 3.) IDOT = (IA, D.O.T.) 1955 PAVING PLAN #1049(1) REFERENCE.

SET. MAG NAIL  
w/WASHER ON  
S.FACE P.P. @  
67" HT.



S.P.C., Ia. N. Zone, USft (T.C.)  
N=3636911.332'  
E=5305968.174'  
(NAD83-2007 "BHco07", RTK Obs.)

FIELD SURVEY: G.T. & J.Z. & D.B. 06/23/09  
PREPARED BY: G.T. & J.Z. & D.B. 9/22/09

## CERTIFICATION



I hereby certify that this land surveying document was prepared and the related survey work was performed by me or under my direct personal supervision and that I am a duly licensed Land Surveyor under the laws of the State of Iowa.

Geoffrey Allen Tinker 09/23/2009  
(date)

License Number 15748

My license renewal date is December 31, 2010

Pages or sheets covered by this seal:

p. 1 & 2 (with S. 1/4 Cor. 31-89-10)

### LIST CORNERS TO BE INDEXED

<u>Corner</u>	<u>Section</u> -	<u>Township</u> -	<u>Range</u>
N. 1/4 Cor.	01	88 N	11 W

P. #1, SEE P. #2 for  
S. 1/4 SECT. 31-T89N-R10W)

## INDEX OF ABBREVIATIONS

(M) = "Measured" Dimension	"NP" = Reflectorless EDM Meas.
(P) = "Platted" Dimension	"MLM" = Indirect Measure
(R) = "Record" Dimension	"CM" = Concrete Monument
(C) = "Calculated" Dimension	"SM" = Survey Marker Spike/Tag
"IGS" = Iowa Geodetic Survey	
"WPA" = Works Progress Admin. Survey	
"Φ" = per George Miller Survey (Bfco Surveyor 1858-1860)	
"S" = per John Ball Survey (Bfco Surveyor 1866-1891)	
"N" = per Nathan Barber Survey (Bfco Surveyor 1906-1931)	

PREPARED BY:

BLACK HAWK COUNTY ENGINEERS OFFICE  
316 E. FIFTH STREET, ROOM 211 WATERLOO, IOWA 50703

PH.# (319) 833-3008  
FAX.# (319) 833-3139

SLSI 9-94  
CERT 03-09

# UNITED STATES PUBLIC LAND SURVEY CORNER CERTIFICATE OF

Land Survey Monuments situated in Section 31, Township 89 N,  
Range 10 W, of the Fifth Principal Meridian, BUCHANAN County, Iowa.  
Previously recorded in DOC. #1996-R02382, of Buchanan Co. Recorder's Office.

P. #2  
OF 2

(Show reason for preparing this certificate): The corner monument has been Replaced or Modified, per Ia. Code 355.11(1)(c)  
(Evidence and detailed procedures used in establishing the corner position(s) and monumentation found or placed.)

Monument Description and Remarks: S. 1/4 COR. FOUND #5 REBAR SIZED YELLOW PLASTIC CAP (PLS #8033) IN C.L. EXISTING ACC PAVEMENT, PRIOR TO RESURFACING PROJECT. CORNER LOCATED ON COUNTY/TOWNSHIP (CORRECTION) LINE. EXISTING ACC OVERLAY ±5" Dp. TO PCC PAVEMENT, w/"NO" FURTHER SEARCH FOR MONUMENTATION IN PCC DONE. TEMP. REF. w/RTK GPS (TWO LINE w/WT. AVG.), THEN MILLED 2" EXIST. ACC PAVEMENT & ADDED 5" H.M.A./A.C.C. OVERLAY. CORNER RESET WITH #5 (5/8") x ±7" L. REBAR PER RTK GPS REF.'S, AND RETIED. CORNER LOCATED @ ± C.L. NEW H.M.A./A.C.C. PAVING JOINT. NOTE THAT CORNER ANGLE SHOWN REFER'S TO "TRUE CORNER" (CLOSING) OF RECORD ON SOUTH LINE OF S.E. 1/4 SECTION 31 FOR THE N.E. COR. SECTION 1-T88-R11, AS SHOWN.

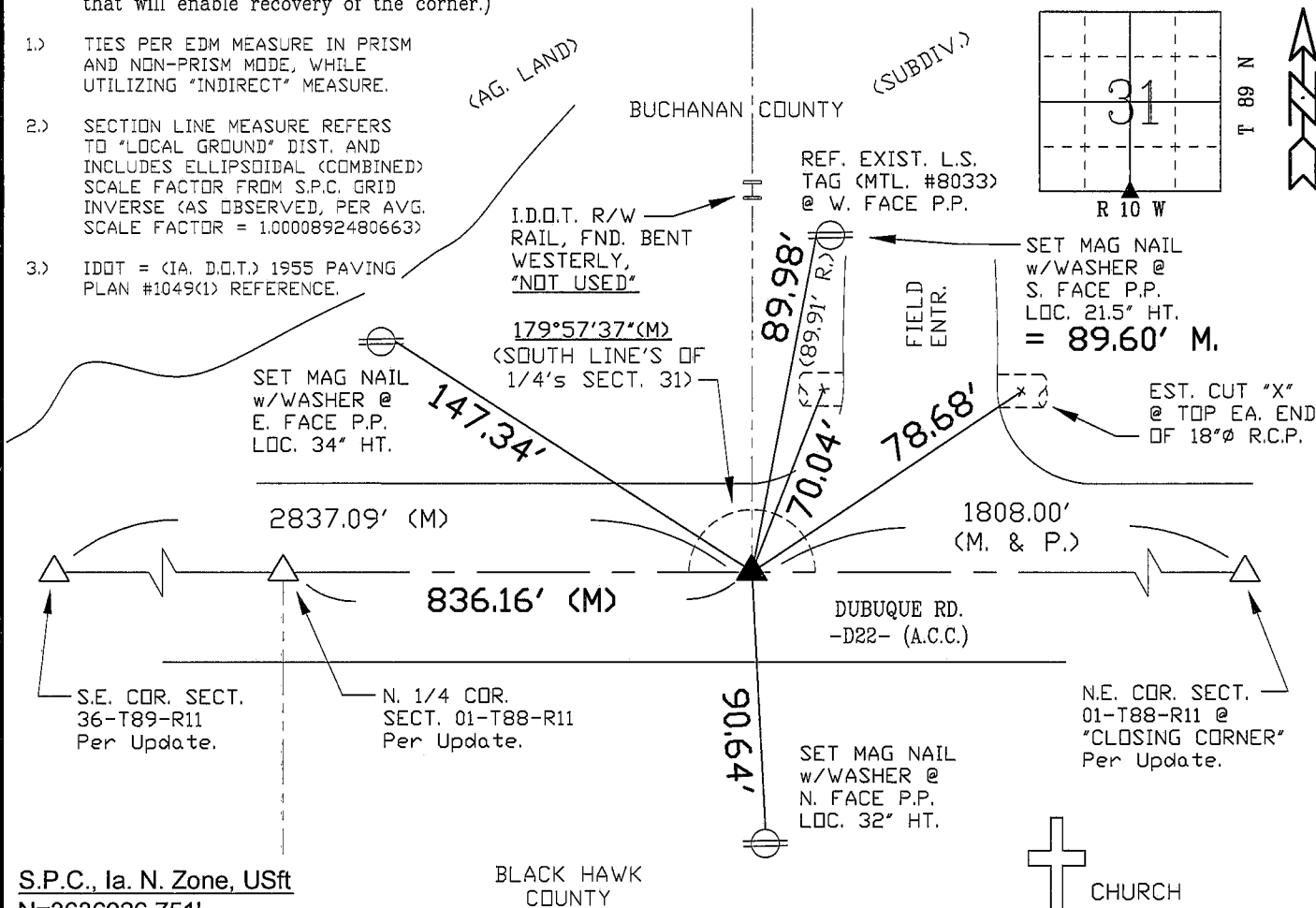
NOTE: ALL DISTANCES PLUMB/HORIZ.  
(H.D.), "UNLESS DENOTED".

## PLAN VIEW

BHco Hist. Ties: -N/A-  
FIELD BOOK: BHco. #488 p.48 (#1027)

(Show a minimum of three reference ties to durable physical objects, relevant monuments and physical conditions that will enable recovery of the corner.)

- 1.) TIES PER EDM MEASURE IN PRISM AND NON-PRISM MODE, WHILE UTILIZING "INDIRECT" MEASURE.
- 2.) SECTION LINE MEASURE REFERS TO "LOCAL GROUND" DIST. AND INCLUDES ELLIPSOIDAL (COMBINED) SCALE FACTOR FROM S.P.C. GRID INVERSE (AS OBSERVED), PER AVG. SCALE FACTOR = 1.0000892480663
- 3.) IDOT = (IA. D.O.T.) 1955 PAVING PLAN #1049(1) REFERENCE.

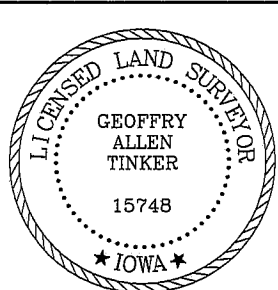


S.P.C., Ia. N. Zone, USft  
N=3636926.751'  
E=5306804.119'  
(NAD83-2007 "BHco07", RTK Obs.)

BLACK HAWK  
COUNTY

FIELD SURVEY: G.T. & J.Z. & D.B. 06/23/09  
PREPARED BY: G.T. & J.Z. & D.B. 9/23/09

## CERTIFICATION



I hereby certify that this land surveying document was prepared and the related survey work was performed by me or under my direct personal supervision and that I am a duly licensed Land Surveyor under the laws of the State of Iowa.  
Geoffrey Allen Tinker 09/23/2009 (date)  
License Number 15748  
My license renewal date is December 31, 2010  
Pages or sheets covered by this seal:  
p. 1 & 2, (with N. 1/4 Cor. 01-88-11)

## LIST CORNERS TO BE INDEXED

Corner S. 1/4 Cor. Section - 31 Township - 89 N Range 10 W

**P. #2, FILED WITH N. 1/4  
SECTION 01-T88N-R11W)**

## INDEX OF ABBREVIATIONS

(M) = "Measured" Dimension "NP" = Reflectorless EDM Meas.  
(P) = "Platted" Dimension "MLM" = Indirect Measure  
(R) = "Record" Dimension "CM" = Concrete Monument  
(C) = "Calculated" Dimension "SM" = Survey Marker Spike/Tag  
"IGS" = Iowa Geodetic Survey  
"WPA" = Works Progress Admin. Survey  
"G" = per George Miller Survey (BHco Surveyor 1858-1860)  
"B" = per John Ball Survey (BHco Surveyor 1866-1891)  
"N" = per Nathan Barber Survey (BHco Surveyor 1908-1931)