

BLACK HAWK COUNTY ENGINEER

PREPARED BY: BLACK HAWK COUNTY ENGINEERS OFFICE  
316 E. FIFTH STREET, ROOM 211 WATERLOO, IOWA 50703PH.# (319) 833-3008  
FAX.# (319) 833-3139SLSI 9-94  
CERT 12-96

UNITED STATES PUBLIC LAND SURVEY CORNER CERTIFICATE OF  
Land Survey Monuments situated in Section 01, Township 88 N,  
Range 11 W, of the Fifth Principal Meridian, BLACK HAWK County, Iowa.  
Previously recorded in Misc. Book 298, Page 781, in County Recorder's Office.

(Show reason for preparing this certificate, the evidence and detailed procedures used in establishing the corner positions and monumentation found or placed.)

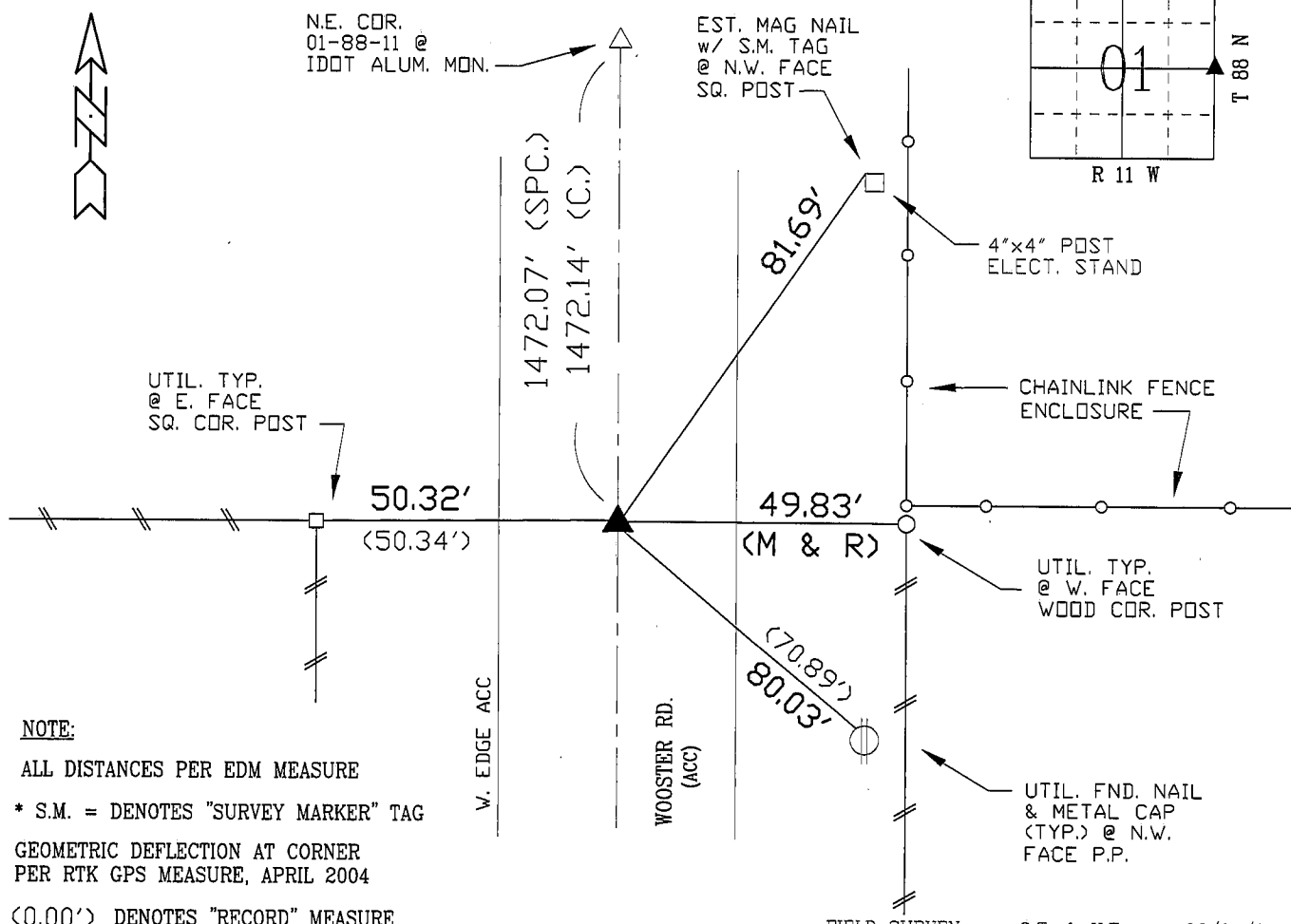
Monument Description and Remarks: FND. #3 PIN PRIOR TO RESURFACING.  
RE-EST. #5 REBAR x 5" L. FLUSH w/ ACC SURFACE, ALIGNED WITH FENCE  
TO WEST AND LOCATED +/- 0.40' E. OF C.L. ACC JOINT.

CORNER UPDATED DUE TO ACC RESURFACING PROJECT, MAY 2004.

## PLAN - VIEW

(Show a minimum of three reference ties to durable physical objects, relevant monuments and physical conditions that will enable recovery of the corner.)

NOT TO SCALE



## NOTE:

ALL DISTANCES PER EDM MEASURE

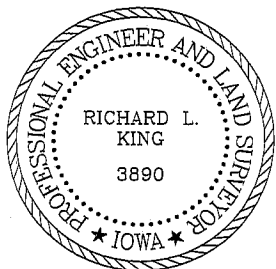
\* S.M. = DENOTES "SURVEY MARKER" TAG

GEOMETRIC DEFLECTION AT CORNER  
PER RTK GPS MEASURE, APRIL 2004

(0.00') DENOTES "RECORD" MEASURE

FIELD SURVEY: G.T. & K.E. 06/07/04  
PREPARED BY: G. TINKER 07/09/04

## CERTIFICATION



I hereby certify that this land surveying document was prepared and the related survey work was performed by me or under my direct personal supervision and that I am a duly licensed Land Surveyor under the laws of the State of Iowa.

*Richard L. King* 7/12/04  
Richard L. King (date)

License Number 3890

My license renewal date is December 31, 2005

Pages or sheets covered by this seal:

This Land Corner Certificate Only.

## LIST CORNERS TO BE INDEXED

Corner	Section	Township	Range
E. 1/4	01	88 N	11 W