

Recorded Misc. Bk. 553 p. 381

"TAMA" County Recorder

PAUL H. HELLAND, 2322 W. 1ST ST., SUITE B, CEDAR FALLS, IOWA 50613, (319)-266-0161

UNITED STATES PUBLIC LAND SURVEY CORNER CERTIFICATE OF

Land Survey Monuments situated in Section 23, Township 86, Range 14, of the Fifth Principal Meridian, BLACK HAWK County, Iowa.
Previously recorded in Book _____, Page _____.

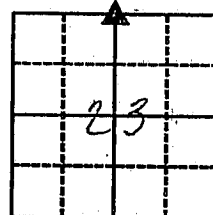
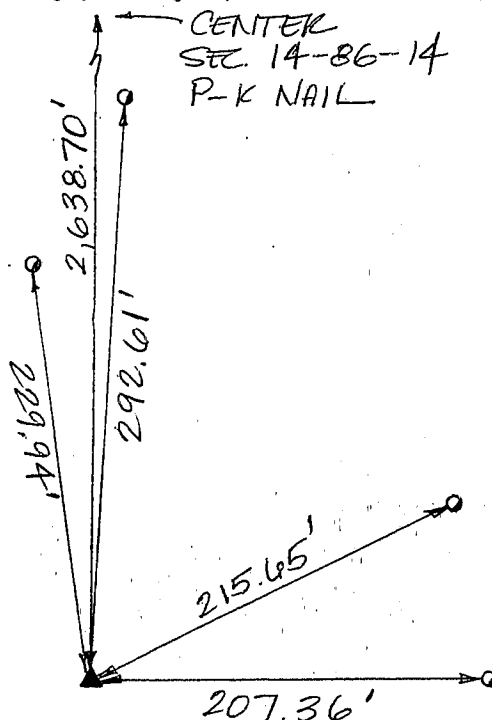
(Show reason for preparing this certificate, the evidence and detailed procedures used in establishing the corner positions and monumentation found or placed.)

Monument Description and Remarks: SURVEY DONE IN S 1/2 SEC. 14-86-14
N 1/4 CORNER -> FOUND NO. 4 REBAR W/CAP #6505.

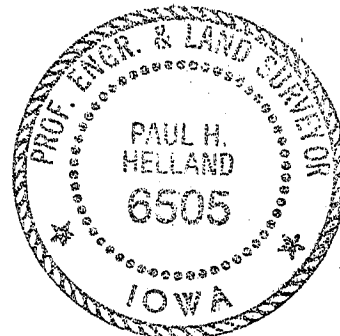
PLAN - VIEW

(Show a minimum of three reference ties to durable physical objects, relevant monuments and physical conditions that will enable recovery of the corner.)

ALL TIES, EXCEPT
CENTER SEC. 14,
ARE NO. 4 REBAR
W/CAP #6505



N 1/4 CORNER



96-313

I HEREBY CERTIFY THAT THIS PLAT, MAP, SURVEY OR REPORT WAS MADE BY ME OR UNDER MY DIRECT PERSONAL SUPERVISION AND THAT I AM A DULY REGISTERED LAND SURVEYOR UNDER THE LAWS OF THE STATE OF IOWA

Paul H. Helland DATE 12/28/96

PAUL H. HELLAND, P.E. & R.L.S. IOWA REGISTRATION NO. 6505.

MY REGISTRATION EXPIRES DECEMBER 31, 1997

HES

THUNDER RIDGE BANK BUILDING
2322 WEST 1ST ST., SUITE B
CEDAR FALLS, IOWA 50613
319-266-0161

HELLAND ENGINEERING & SURVEYING, LTD.

List Corners to be Indexed

Corners	Section	Twp	Range
N 1/4	23	86	14