

Recorded MISC. # 553 p.380

"TAMA" County Recorder

PAUL H. HELLAND, 2322 W. 1ST ST., SUITE B, CEDAR FALLS, IOWA 50613, (319)-266-0161

UNITED STATES PUBLIC LAND SURVEY CORNER CERTIFICATE OF

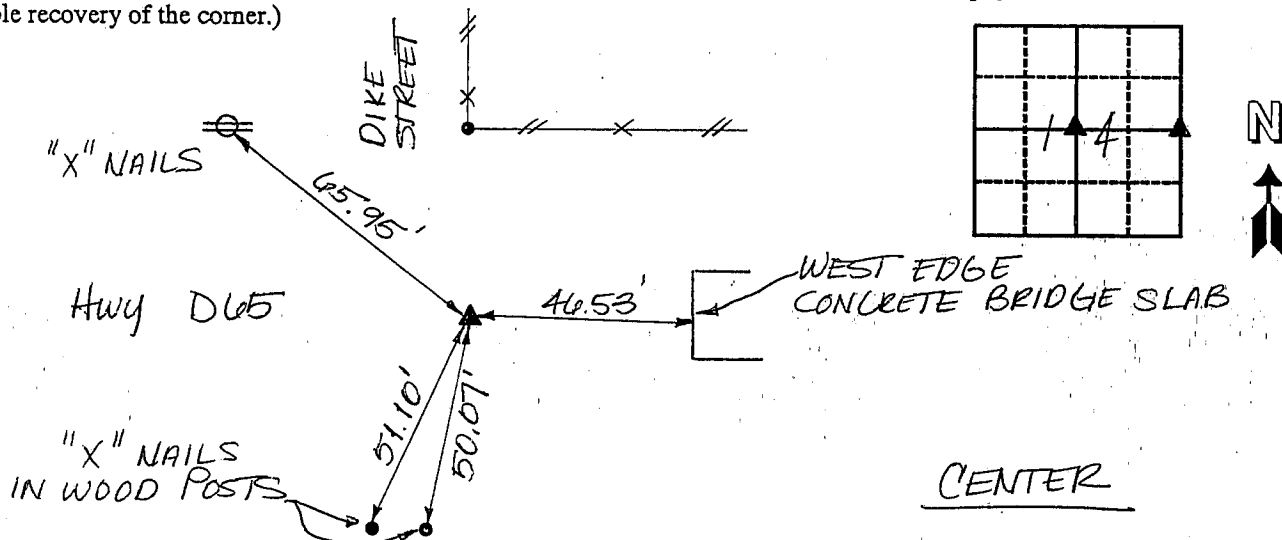
Land Survey Monuments situated in Section 14, Township 86, Range 14, of the Fifth Principal Meridian, BLACK HAWK County, Iowa.
Previously recorded in Book _____, Page _____.

(Show reason for preparing this certificate, the evidence and detailed procedures used in establishing the corner positions and monumentation found or placed.)

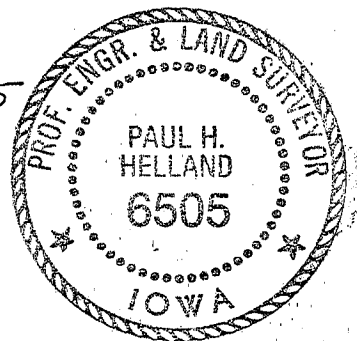
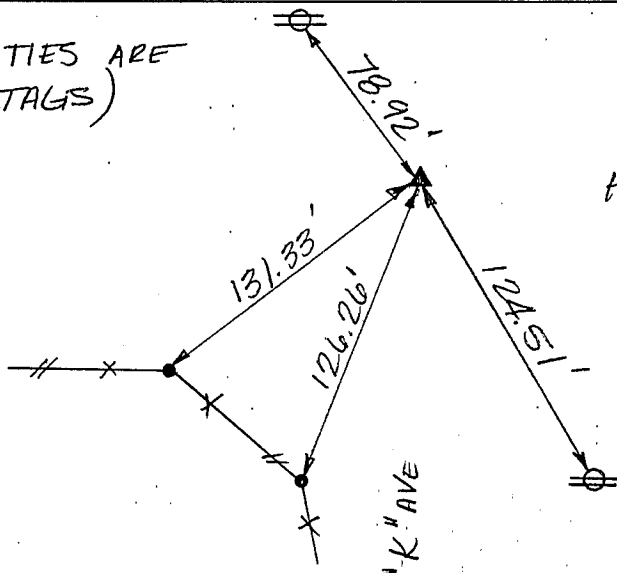
Monument Description and Remarks: SURVEY DONE IN S¹/₂ SEC. 14-86-14
CENTER → FOUND P-K NAIL IN A.C. MAT
E¹/₄ COR. → FOUND P-K NAIL IN A.C. MAT

PLAN - VIEW

(Show a minimum of three reference ties to durable physical objects, relevant monuments and physical conditions that will enable recovery of the corner.)



(ALL TIES ARE RED TAGS)



E¹/₄ CORNER

96-313

I HEREBY CERTIFY THAT THIS PLAT, MAP, SURVEY OR REPORT WAS MADE BY ME OR UNDER MY DIRECT PERSONAL SUPERVISION AND THAT I AM A DULY REGISTERED LAND SURVEYOR UNDER THE LAWS OF THE STATE OF IOWA.
PAUL H. HELLAND, P.E. & R.L.S. IOWA REGISTRATION NO. 6505
MY REGISTRATION EXPIRES DECEMBER 31, 1997

HES

THUNDER RIDGE BANK BUILDING
2322 WEST 1ST ST., SUITE B
CEDAR FALLS, IOWA 50613
319-266-0161

HELLAND ENGINEERING & SURVEYING, LTD.

List Corners to be Indexed

| Corners | Section | Twp | Range |
|-------------------------------|---------|-----|-------|
| CENTER | 14 | 86 | 14 |
| E ¹ / ₄ | 14 | 86 | 14 |