

SC
MISC.

BLACK HAWK COUNTY IOWA:SS
FILED FOR RECORD Apr 10 1998 AT 20:21
4:00P M., AND RECORDED IN BOOK 329
OF MISC PAGE 670
RECORDER
FEE 1-5.00/
PAUL HELLAND

PAUL H. HELLAND, 1107 TECHNOLOGY PARKWAY, CEDAR FALLS IOWA 50613, (319) 268-0161

UNITED STATES PUBLIC LAND SURVEY CORNER CERTIFICATE
OF

LAND SURVEY MONUMENTS SITUATED IN SECTION NO. 36, TOWNSHIP NO. 87N, RANGE
NO. 14W, OF THE FIFTH PRINCIPAL MERIDIAN, BLACK HAWK COUNTY, IOWA.
PREVIOUSLY RECORDED IN BOOK 300, PAGE 935

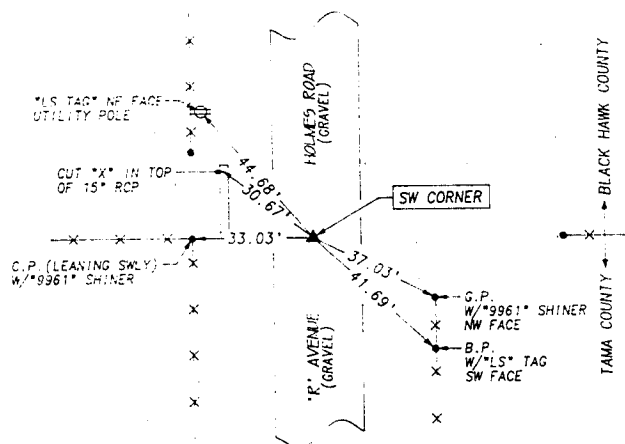
(SHOW REASON FOR PREPARING THIS CERTIFICATE, THE EVIDENCE AND DETAILED PROCEDURES USED IN ESTABLISHING THE CORNER POSITIONS
AND MONUMENTATION FOUND OR PLACED.)

MONUMENT DESCRIPTION AND REMARKS:

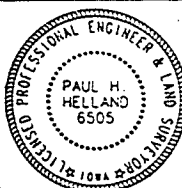
SW CORNER - FOUND 60d NAIL ABOVE CONCRETE MONUMENT W/BRASS CAP MARKED: $\frac{35}{2} \frac{36}{1}$ 1.8' DEEP, SET NO. 4 REBAR
W/REG. CAP #6505 ABOVE, 0.2' DEEP.

PLAN VIEW

(SHOW A MINIMUM OF THREE REFERENCE TIES TO DURABLE PHYSICAL OBJECTS, RELEVANT MONUMENTS AND PHYSICAL CONDITIONS THAT WILL
ENABLE RECOVERY OF THE CORNER.)



HELLAND ENGINEERING & SURVEYING, LTD.
1107 Technology Parkway
Cedar Falls, Iowa 50613
(319) 268-0161



I hereby certify that this land surveying document was prepared and
the related survey work was performed by me or under my direct
personal supervision and that I am a duly licensed Land Surveyor
under the laws of the State of Iowa.

Paul H. Helland 4/27/98
Paul H. Helland
License number 6505
My license renewal date is December 31, 1998
All pages or sheets are covered by this seal except:

LIST CORNERS TO BE INDEXED			
CORNER	SECTION	TOWNSHIP	RANGE
SW	36	87N	14W

329 PAGE 670