

Misc/SC  
INDEX  
MARGIN  
PROOF  
COMPARE

BLACK HAWK COUNTY IOWA:SS  
Filed for record Nov 16, 1998 at  
4:00 P.M. and recorded in Book 332  
of Misc Page 302

11602

*Richard L. King* Recorder  
Fee N/C  
BLACK HAWK COUNTY ENGINEER

PREPARED BY: BLACK HAWK COUNTY ENGINEERS OFFICE  
316 E. FIFTH STREET, ROOM 211 WATERLOO, IOWA 50703  
PH# (319) 291-2419  
FAX# (319) 291-2461  
SLSI 9-94  
CERT 12-96

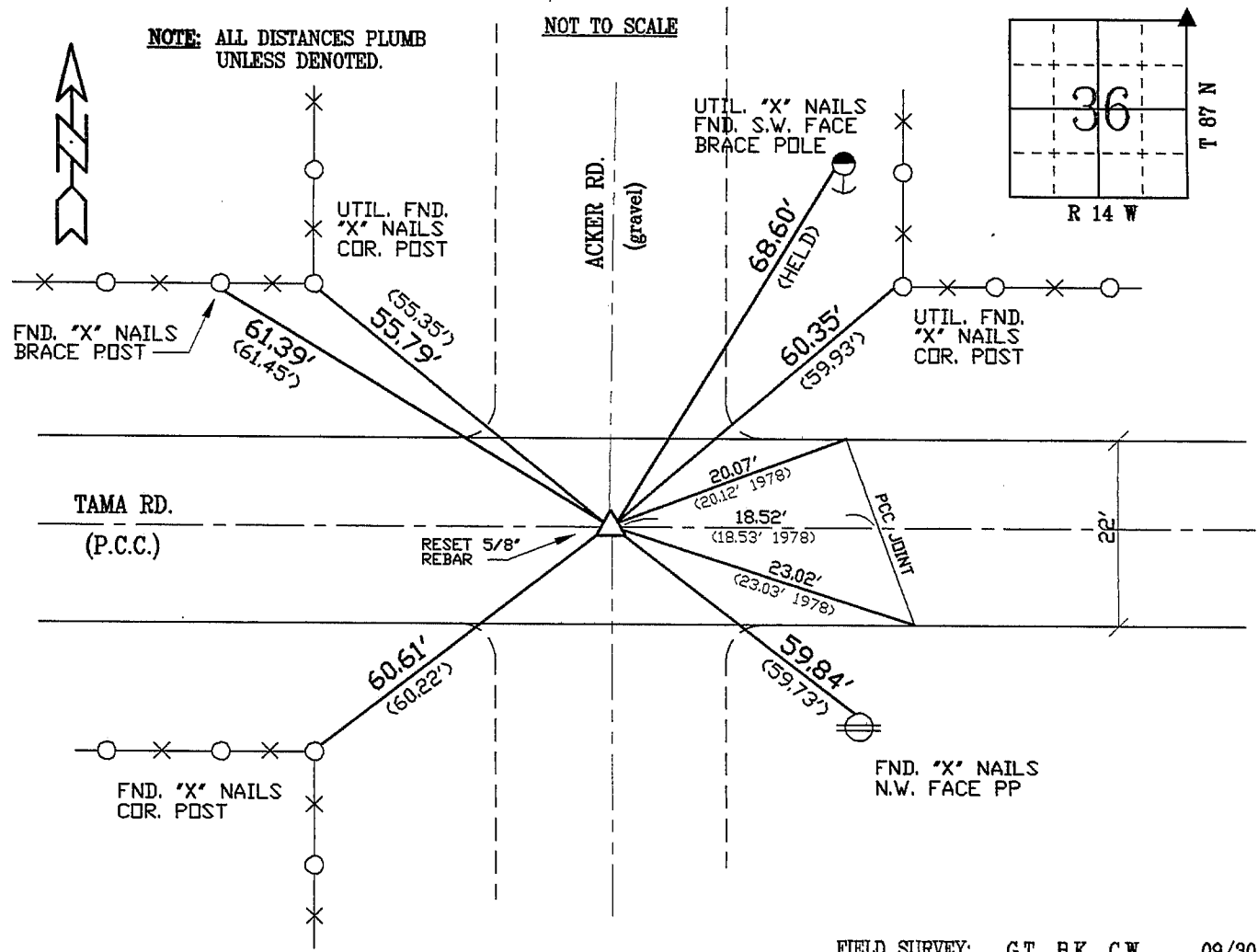
UNITED STATES PUBLIC LAND SURVEY CORNER CERTIFICATE OF  
Land Survey Monuments situated in Section 36, Township 87 N,  
Range 14 W, of the Fifth Principal Meridian, BLACK HAWK County, Iowa.  
Previously recorded in Misc. Book N/A, Page N/A, in County Recorder's Office.

(Show reason for preparing this certificate, the evidence and detailed procedures used in establishing the corner positions and monumentation found or placed.)

Monument Description and Remarks: CORNER OBLITERATED BY COUNTY FOR  
PCC REMOVAL/REPL. @ INTERSECTION. COUNTY TIES FOUND DERIVED  
NUMEROUS SOLUTIONS. DECIDED TO UTIL. 1978 TIES HOLDING EAST JOINT  
W/ THE ONLY TIE HELD FROM OCT. 1974, TO THAT OF N.E. UTILITY BRACE  
POLE. RE-EST. 5/8" RBR. (DRILLED) LOC. 0.07' N. CL. JOINT (PATCH).  
RECORD COUNTY TIES DENOTED BY ( ), AS SHOWN FOR COMPARISON.

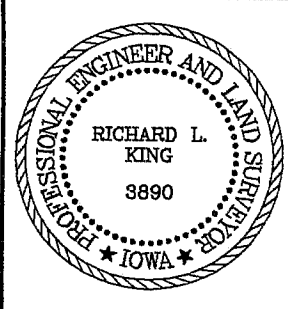
PLAN - VIEW

(Show a minimum of three reference ties to durable physical objects, relevant monuments and physical conditions that will enable recovery of the corner.)



FIELD SURVEY: G.T., B.K., C.W. 09/30/98  
PREPARED BY: G.T. 10/27/98

CERTIFICATION



I hereby certify that this land surveying document was prepared and the related survey work was performed by me or under my direct personal supervision and that I am a duly licensed Land Surveyor under the laws of the State of Iowa.

*Richard L. King* 11/16/98  
Richard L. King (date)  
License Number 3890  
My license renewal date is December 31, 1999  
Pages or sheets covered by this seal:  
This Land Corner Certificate Only.

LIST CORNERS TO BE INDEXED

Corner	Section	Township	Range
N.E. COR.	36	87 N	14 W