



Doc ID: 003747330001 Type: GEN
Recorded: 04/22/2009 at 01:24:57 PM
Fee Amt: \$0.00 Page 1 of 1
Instr# 200800024484
Black Hawk County Iowa
JUDITH A MCCARTHY RECORDER
Book 1080 Page 34576 - 34576
File **2009-00019923**

PREPARED BY: *BLACK HAWK COUNTY ENGINEERS OFFICE
316 E. FIFTH STREET, ROOM 211 WATERLOO, IOWA 50703

PH.# (319) 833-3008
FAX.# (319) 833-3139

SLSI 9-94
BHCO 03-09

UNITED STATES PUBLIC LAND SURVEY CORNER CERTIFICATE OF
Land Survey Monuments situated in Section 36, Township 87 N,
Range 14 W, of the Fifth Principal Meridian, BLACK HAWK County, Iowa.
Previously recorded in Misc. Book N/A, Page N/A, in County Recorder's Office.

(Show reason for preparing this certificate): The corner monument has been Replaced or Modified, per Ia. Code 355.11(1)(c)
(Evidence and detailed procedures used in establishing the corner position(s) and monumentation found or placed.)

Monument Description and Remarks: N. 1/4 COR. FND. STEEL PIN (ROUND HEAD)
IN LEAD PLUG WITHIN PCC PVM'T. PRIOR TO RUBBLIZATION. TEMP. REFERENCED CORNER
TO TEMP. CONSTRUCTION TIES & PERM. TIES, AS SHOWN. HMA RESURFACING 22' WIDE
HMA PVM'T. @ 7" DEEP. CORNER RESET WITH ±7"L. x 5/8" REBAR FLUSH WITH HMA
PAVEMENT, AND LOCATED @ ±0.55' NORTH OF C.L. HMA PAVING JOINT.

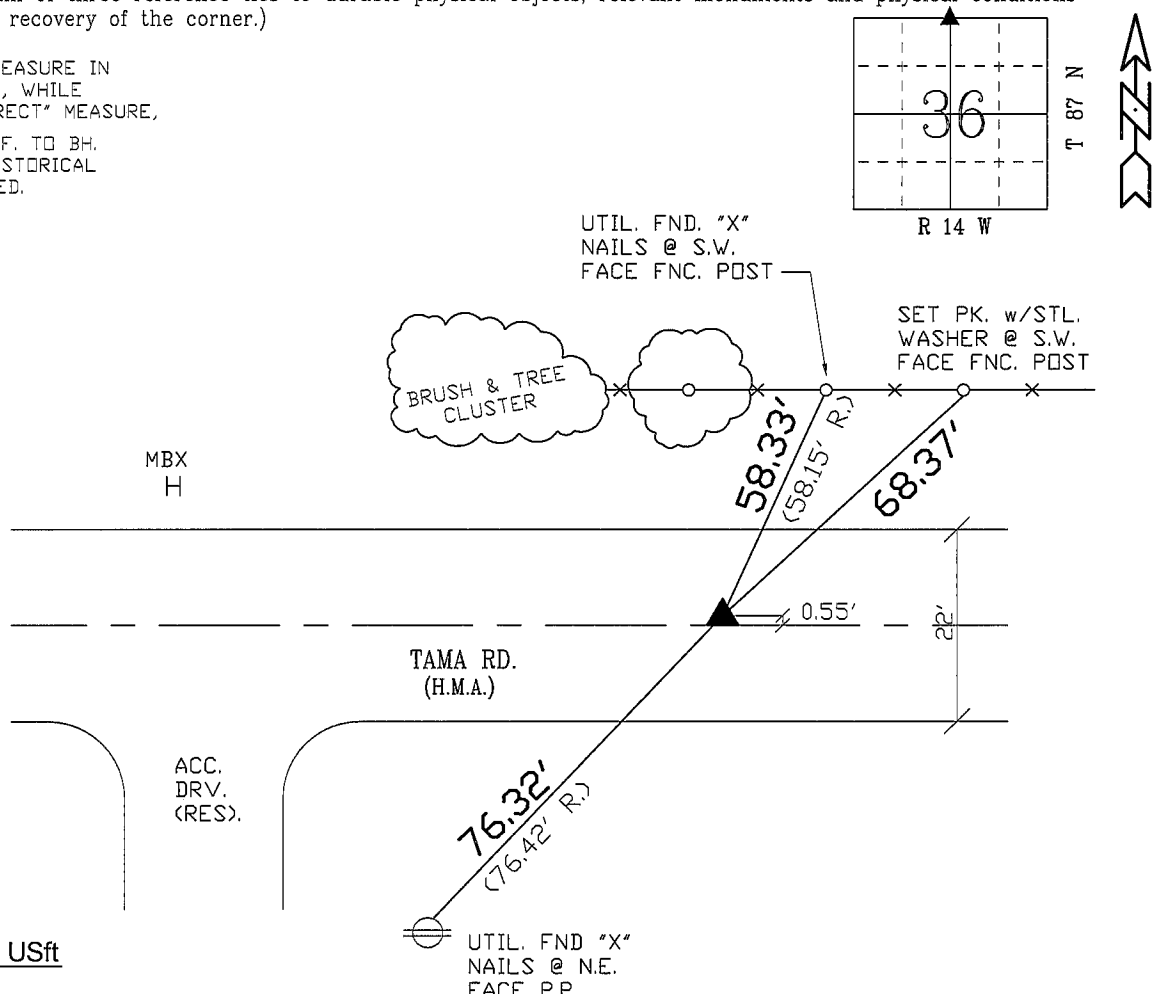
NOTE: ALL DISTANCES PLUMB/HORIZ.
(H.D.), "UNLESS DENOTED".

PLAN VIEW

BHco Hist. Ties: BK #1000 (36) 87-14
FIELD BOOK: BHco. #488 p.14

(Show a minimum of three reference ties to durable physical objects, relevant monuments and physical conditions
that will enable recovery of the corner.)

- 1.) TIES PER EDM MEASURE IN
NON-PRISM MODE, WHILE
UTILIZING "INDIRECT" MEASURE,
- 2.) RECORD TIES REF. TO BH.
CO. ENGINEER HISTORICAL
TIES, AS DENOTED.



S.P.C., Ia. N. Zone, USft

N=3578491.82

E=5211534.94

(NAD83-2007 "BHco07", RTK Obs.)

RES.
#3501

FIELD SURVEY: G.T. & J.Z. 07/29/08

PREPARED BY: G.T. & J.Z. 4/13/09

CERTIFICATION



I hereby certify that this land surveying document
was prepared and the related survey work was
performed by me or under my direct personal
supervision and that I am a duly licensed Land
Surveyor under the laws of the State of Iowa.

Geoffrey Allen Tinker 04/22/09
Geoffrey Allen Tinker (date)

License Number 15748

My license renewal date is December 31, 2010

Pages or sheets covered by this seal:

This Land Corner Certificate Only.

LIST CORNERS TO BE INDEXED

Corner	Section -	Township -	Range
N. 1/4 Cor.	36	87 N	14 W
S. 1/4 Cor.	25	87 N	14 W

INDEX OF ABBREVIATIONS

(M) = "Measured" Dimension "NP" = Reflectorless EDM Meas.
(P) = "Platted" Dimension "MLM" = Indirect Measure
(R) = "Record" Dimension "CM" = Concrete Monument
(C) = "Calculated" Dimension "SM" = Survey Marker Spike/Tag
"IGS" = Iowa Geodetic Survey
"WPA" = Works Progress Admin. Survey
"G" = per George Miller Survey (BHco Surveyor 1858-1860)
"B" = per John Ball Survey (BHco Surveyor 1866-1891)
"N" = per Nathan Barber Survey (BHco Surveyor 1908-1931)