

# UNITED STATES PUBLIC LAND SURVEY CORNER CERTIFICATE

OF

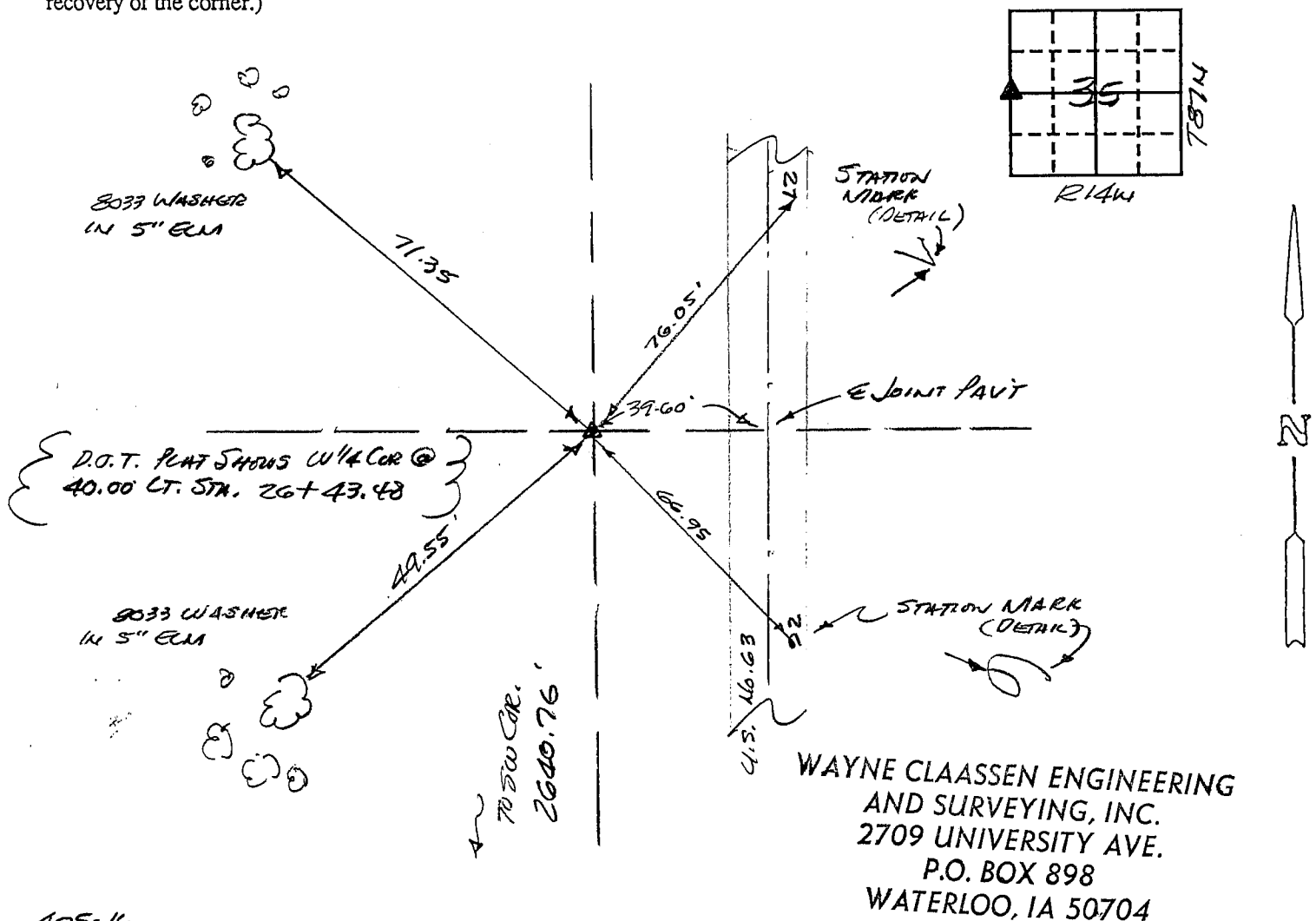
Land Survey Monuments situated in Section 35, Township 87N, Range 14W, of the Fifth Principal Meridian, \_\_\_\_\_ County, Iowa.  
Previously recorded in N/A in County Recorder's Office.

(book, page, document number, etc.)  
(Show reason for preparing this certificate, the evidence and detailed procedures used in establishing the corner positions and monumentation found or placed.)

Monument Description and Remarks: FOUND 4"x4" CONC. MAN. w/1/2" Ø REBAR IN CENTER PER  
LOWA D.O.T. AS BLT PERMITS & RLW PLAT OF PARCEL NO.1, PROJECT FID-63-9(16)--21-7  
DATED 11-1-71 BY C. BABBITT.

### PLAN - VIEW

(Show a minimum of three reference ties to durable physical objects, relevant monuments and physical conditions that will enable recovery of the corner.)



405-16

I hereby certify that the survey work was completed and this certificate was prepared by me or under my direct personal supervision and that I am a duly registered land surveyor under the laws of the state of Iowa.

Signature: \_\_\_\_\_

Name typed or printed: F. Williams King

Date: 2-23-84

Reg. No.

8033

### List Corners to be Indexed

Corners	Section	Twp	Range
W 1/4	35	87N	14W
E 1/4	34	87N	14W

SEAL



MISC. BK. 310 p. 81