

# UNITED STATES PUBLIC LAND SURVEY CORNER CERTIFICATE

OF

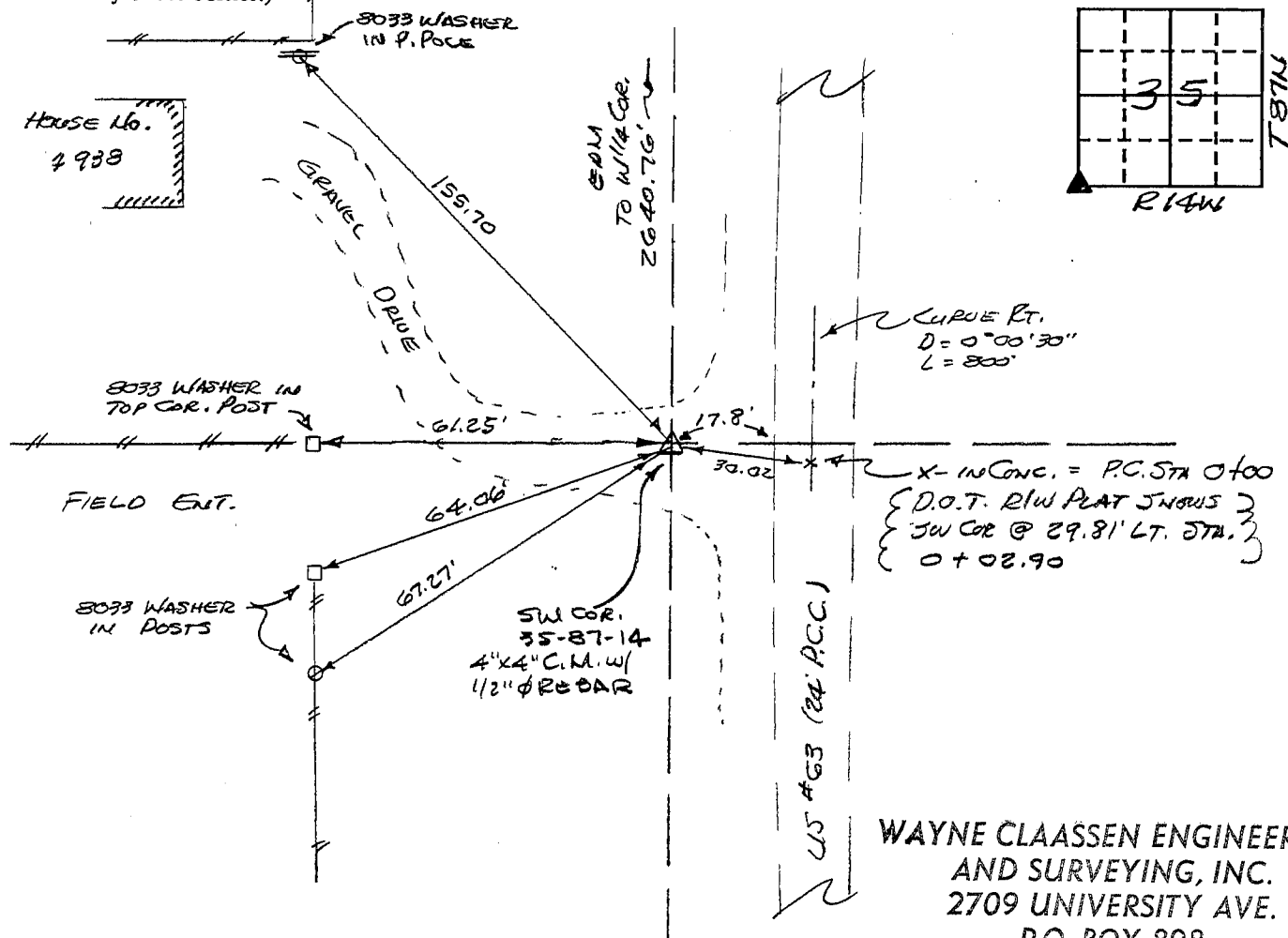
Land Survey Monuments situated in Section 35, Township 87N, Range 14W, of the Fifth Principal Meridian, BLACK HAWK County, Iowa.  
Previously recorded in N/A in County Recorder's Office.

(book, page, document number, etc.)  
(Show reason for preparing this certificate, the evidence and detailed procedures used in establishing the corner positions and monumentation found or placed.)

Monument Description and Remarks: FOUND 4"x4" CONC. MON. W/ 1/2" Ø REBAR IN CENTER PER IOWA D.O.T. AS B.T. PLANS & RLW PLAT OF PARCEL No. 1, PROJECT FN-63-9-9(16)--21-7, DATED 11-1-1971 BY C. BABBITT.

## PLAN - VIEW

(Show a minimum of three reference ties to durable physical objects, relevant monuments and physical conditions that will enable recovery of the corner.)



WAYNE CLAASSEN ENGINEERING  
AND SURVEYING, INC.  
2709 UNIVERSITY AVE.  
P.O. BOX 898  
WATERLOO, IA 50701

405-16

I hereby certify that the survey work was completed and this certificate was prepared by me or under my direct personal supervision and that I am a duly registered land surveyor under the laws of the state of Iowa.

Signature: F. William King

Name typed or printed: F. WILLIAM KING

Date: 2-23-1994 Reg. No. 8033

Corners	List Corners to be Indexed	Section	Twp	Range
SW	35	87N	14W	
SE	34	87N	14W	

MISC. BK. 310 p. 79

SEAL

