



PREPARED BY
AND RETURN THIS ORIGINAL DOCUMENT TO:
JON MYERS PLS
IOWA DEPARTMENT OF TRANSPORTATION
DISTRICT 1 OFFICE
1020 SOUTH 4TH STREET
AMES, IOWA 50010
PHONE 515-239-1593

[RESERVED FOR COUNTY RECORDER'S USE]

Number: 202400006579
Recorded: 11/17/2023 at 1:40:24.0 PM
County Recording Fee: \$7.00
Iowa E-Filing Fee: \$3.00
Combined Fee: \$10.00
Revenue Tax:
Sandie L. Smith, RECORDER
Black Hawk County, Iowa

UNITED STATES PUBLIC LAND SURVEY CORNER CERTIFICATE

Land Survey Monument(s) situated in Section 35, Township 87 North, Range 14 West, of the Fifth Principal Meridian, BLACKHAWK County, Iowa. IDOT Project NHSN-063-5(64)--2R-86
Previously recorded in MISC BK 300 PG 937 in the
County Recorder's Office.

E 1/4 CORNER 35-87-14:

CORNER CERTIFICATE OF RECORD CALLS FOR THIS CORNER TO BE A FOUND 1/2" ROUND HEADED PIPE. SEARCHED FOR THE CORNER REFERENCES SHOWN ON THE CERTIFICATE BUT WAS UNABLE TO FIND ANY - THE FENCES WERE REMOVED ON WEST SIDE OF ROAD AND WAS UNABLE TO FIND X NAILS IN WOOD POSTS ON EAST SIDE. SEARCHED WITH LOCATOR AND FOUND A 1/2" SQUARE BAR - 4" DEEP. BECAUSE I DID NOT HAVE RECORD OF A SQUARE BAR BEING SET OVER MONUMENT - I REMOVED THE SQUARE BAR - EXPANDED THE HOLE AND CONTINUED TO DIG DOWN UNTIL I FOUND THE 4" x 4' WPA CONCRETE MONUMENT WITH BRASS CAP - 13" DEEP. FOUND CONCRETE MONUMENT MATCHES THE MONUMENT CALLED FOR ON BLACKHAWK COUNTY ENGINEERING TIES AS THE SECTION CORNER AND ACCEPTED IT AS THE E 1/4 CORNER. FILLED IN HOLE AND RAISED MONUMENT WITH A 3/4" PIPE WITH RED CAP #22875 TO 3" FROM TOP OF GRAVEL ROAD.

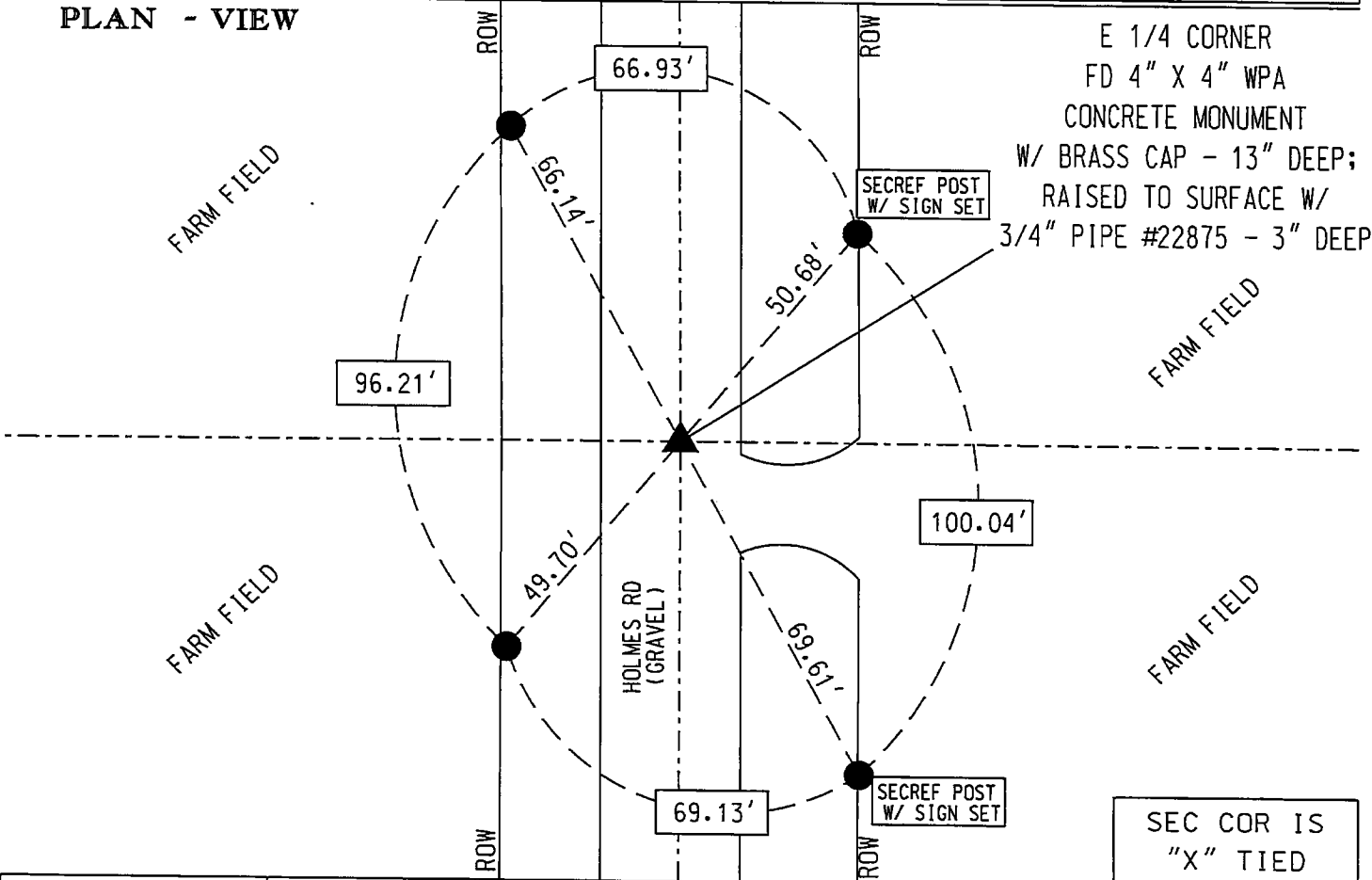
A NEW CORNER CERTIFICATE IS CREATED BECAUSE THE MONUMENT HAS CHANGED AND NEW TIES WERE SET.

SECTION 35 N
T-87-N
R-14-W
NOT TO SCALE
(N.T.S.)

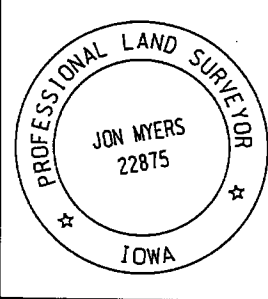
COORDINATE VALUE WAS
ESTABLISHED UTILIZING
NAD83 (2011)(EPOCH 2010)
DATUM USING THE IOWA
REGIONAL COORDINATE
SYSTEM ZONE 5
PROJECTION
IN U.S. SURVEY FEET

E 1/4 CORNER - #LW8046
N - 8774117.7160
E - 15449571.5710

PLAN - VIEW



E 1/4 CORNER
FD 4" X 4" WPA
CONCRETE MONUMENT
W/ BRASS CAP - 13" DEEP;
RAISED TO SURFACE W/
3/4" PIPE #22875 - 3" DEEP



I hereby certify that this Land Surveying document was prepared by me or under my direct personal supervision and that I am a duly licensed Professional Land Surveyor under the laws of the State of Iowa.

Signature: _____
Date: November 8, 2023 Jon Myers Lic. No. 22875
My license renewal date is December 31, 2024.
Pages or sheets covered by this seal. 1

- = FND CORNER
- = SET 5/8 REROD
- ◻ = FND CONC. MON.
- ⚓ = FD IDOT RAIL
- ⦿ = FD/SET IDOT PI

SEC COR IS "X" TIED		
Corner to be Indexed		
E 1/4 COR		
Sec.	Twp.	Range
35	87	14
Drawn by: JMM		