

Recorded

SLSI9-90

UNITED STATES PUBLIC LAND SURVEY CORNER CERTIFICATE
OF

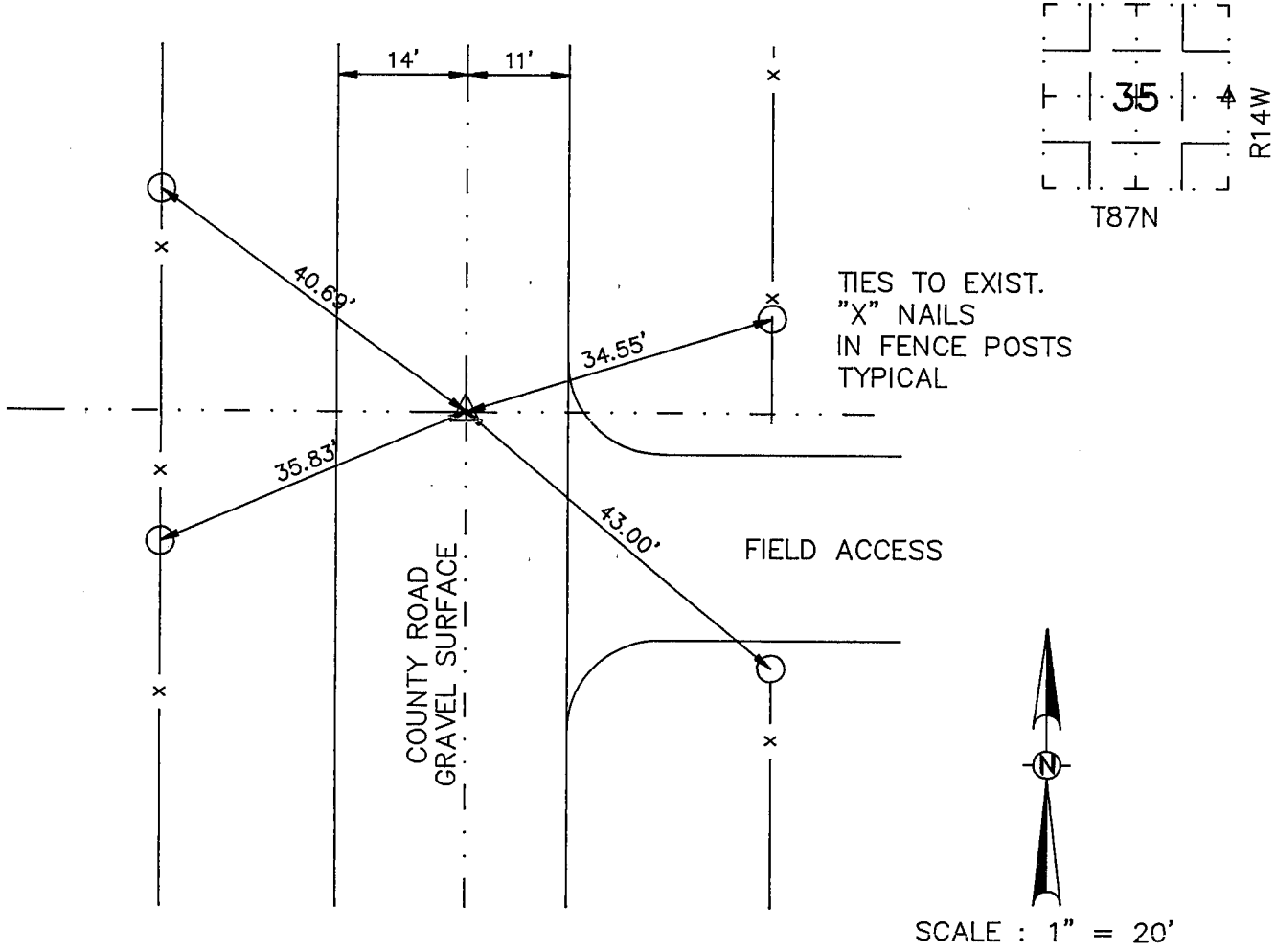
Land Survey Monuments situated in Section 35, Township T87N, Range R14W, of the Fifth Principal Meridian, BLACKHAWK County, Iowa.
Previously recorded in _____ in County Recorder's Office.
(book, page, document number, etc.)

(Show reason for preparing this certificate, the evidence and detailed procedures used in establishing the corner positions and monumentation found or placed.)

Monument Description and Remarks: FOUND 1/2" ROUND HEADED IRON PIPE @ CENTER OF INTERSECTION

PLAN - VIEW

(Show a minimum of three reference ties to durable physical objects, relevant monuments and physical conditions that will enable recovery of the corner.)



I hereby certify that the survey work was completed and this certificate was prepared by me or under my direct personal supervision and that I am a duly registered land surveyor under the laws of the state of Iowa.

Signature: Kirk D. Eschliman
Name typed or printed: Kirk D. Eschliman

Date: 04-24-92 Reg. No. Ia, R.L.S. 9961

Corners	List Corners to be Indexed	Section	Twp	Range
E1/4	35	87	14	

SEAL



MISC. BK. 300 p. 937