

UNITED STATES PUBLIC LAND SURVEY CORNER CERTIFICATE
OF

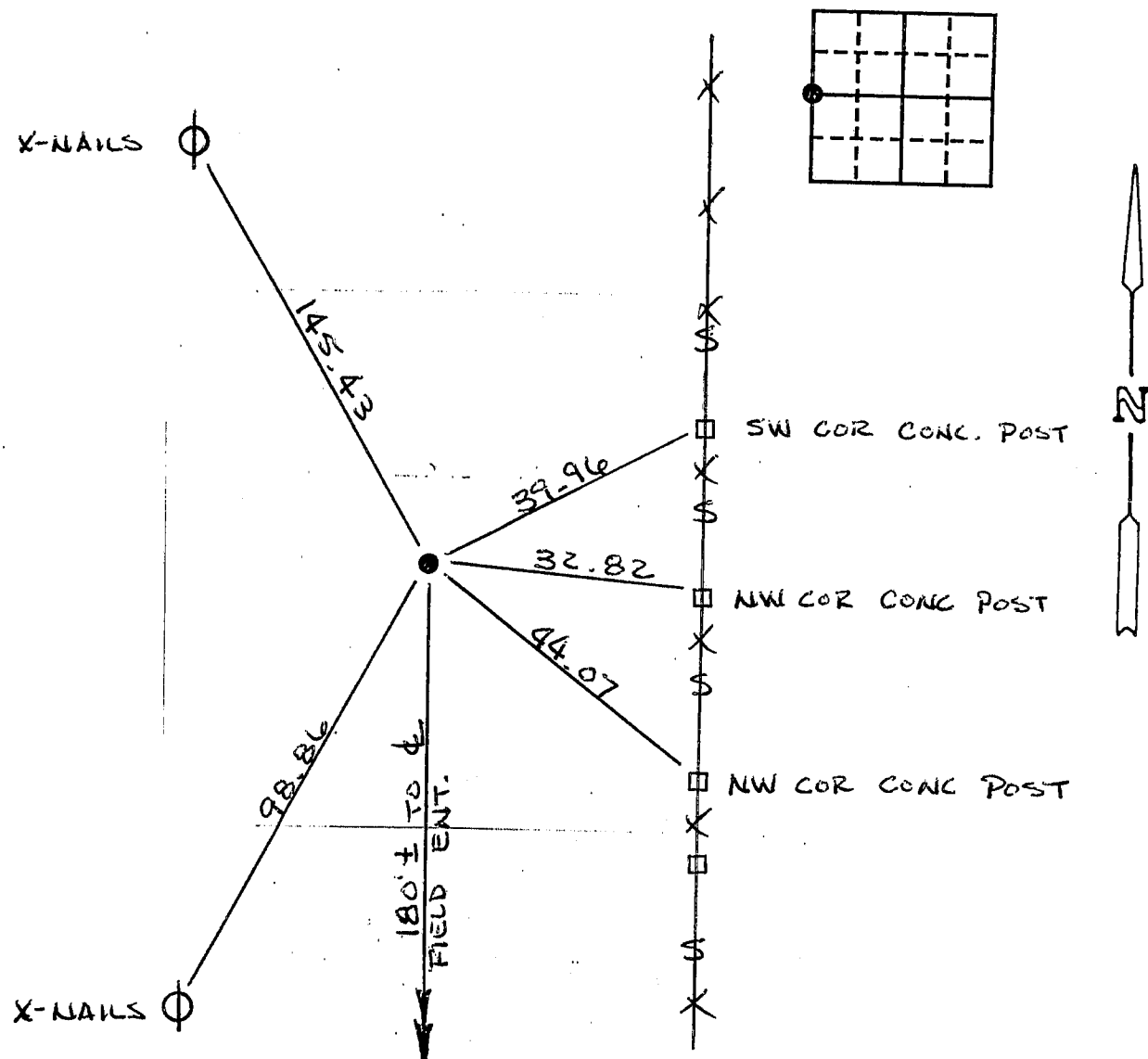
Land Survey Monuments situated in Section 34, Township 87N, Range 14 W, of the Fifth Principal Meridian, BLACK HAWK County, Iowa.
Previously recorded in Book _____, Page _____.

(Show reason for preparing this certificate, the evidence and detailed procedures used in establishing the corner positions and monumentation found or placed.)

Monument Description and Remarks: FOUND PIN WITH IOWA REGISTRATION
CAP #3362 3" DEEP IN ROCK ROAD.
CLAASSEN ENGINEERING & SURVEYING SET PIN & CAP OVER
A FOUND STANDARD MONUMENT 2'-9" DEEP IN 1979.

PLAN - VIEW

(Show a minimum of three reference ties to durable physical objects, relevant monuments and physical conditions that will enable recovery of the corner.)



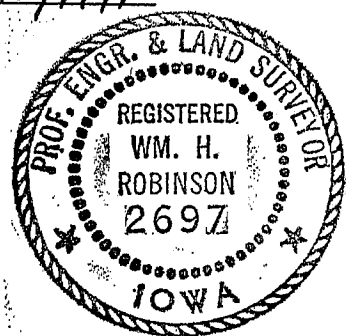
I hereby certify that the survey work was completed and this certificate was prepared by me or under my direct personal supervision and that I am a duly registered land surveyor under the laws of the state of Iowa.

Wm H. Robinson

REGISTERED LAND SURVEYOR NO. 2697

DATE 3/12/1991

SEAL



List Corners to be Indexed

Corners	Section	Twp	Range
W 1/4	34	87N	14W

MISC. BK. 294 p. 946