



PREPARED BY
AND RETURN THIS ORIGINAL DOCUMENT TO:
JON MYERS PLS
IOWA DEPARTMENT OF TRANSPORTATION
DISTRICT 1 OFFICE
1020 SOUTH 4TH STREET
AMES, IOWA 50010
PHONE 515-239-1593

[RESERVED FOR COUNTY RECORDER'S USE]

Number: 202400006577
Recorded: 11/17/2023 at 1:40:23.0 PM
County Recording Fee: \$7.00
Iowa E-Filing Fee: \$3.00
Combined Fee: \$10.00
Revenue Tax:
Sandie L. Smith, RECORDER
Black Hawk County, Iowa

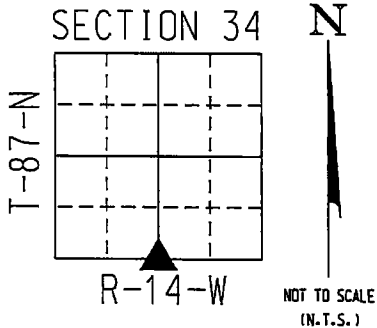
UNITED STATES PUBLIC LAND SURVEY CORNER CERTIFICATE

Land Survey Monument(s) situated in Section 34, Township 87 North, Range 14 West, of the Fifth Principal Meridian, BLACKHAWK County, Iowa. IDOT Project NHSN-063-5(64)--2R-86
Previously recorded in N/A in the County Recorder's Office.

S 1/4 CORNER 34-87-14:

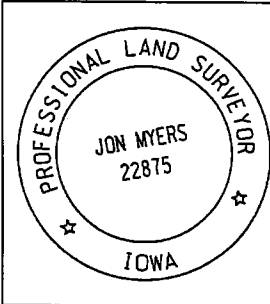
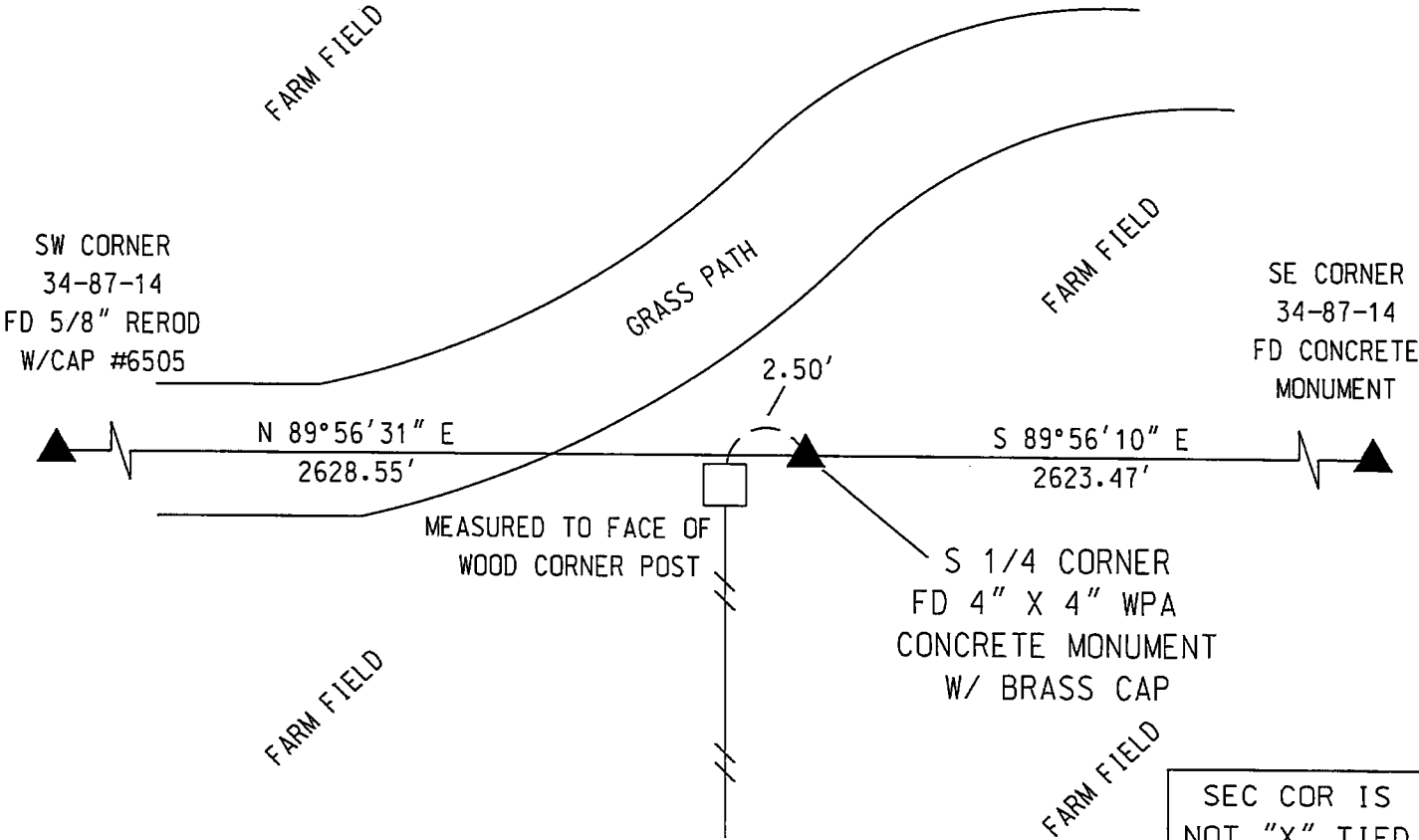
NO CORNER CERTIFICATE OF RECORD FOUND FOR THIS CORNER. BOTH IDOT AND BLACKHAWK COUNTY ENGINEERING TIES SHOW THIS CORNER TO BE A 4" x 4" WPA CONCRETE MONUMENT WITH BRASS DISC IN CENTER. USED INFORMATION FROM A LAND CORNER SURVEY BY MARION L. MILLER DATED JANUARY 12, 1970 (IDOT PROJECT FN-63-6(2)--21-07) IN BLACK HAWK COUNTY TO CREATE A SEARCH POINT - SEARCHED AREA AND FOUND SAID CONCRETE MONUMENT - 12" DEEP. MONUMENT IS 2.79' NORTH OF A STRAIGHT LINE FROM SW CORNER TO SE CORNER. SET A 5' LONG GREEN POST WITH SECTION CORNER SIGN NEXT TO MONUMENT. FOUND CONCRETE MONUMENT MATCHES THE MONUMENT CALLED FOR ON SAID LAND CORNER STONE SURVEY AND COUNTY ENGINEERING TIES AND ACCEPTED IT AS THE S 1/4 CORNER.

A NEW CORNER CERTIFICATE IS CREATED BECAUSE THERE IS NONE ON FILE WITH THE BLACKHAWK COUNTY RECORDER'S OFFICE.



COORDINATE VALUE WAS ESTABLISHED UTILIZING NAD83 (2011)(EPOCH 2010) DATUM USING THE IOWA REGIONAL COORDINATE SYSTEM ZONE 5 PROJECTION IN U.S. SURVEY FEET
S 1/4 CORNER - #LW8041
N - 8771475.0510
E - 15441686.5050

PLAN - VIEW



I hereby certify that this Land Surveying document was prepared by me or under my direct personal supervision and that I am a duly licensed Professional Land Surveyor under the laws of the State of Iowa.
Signature: Jon Myers
Date: November 8, 2023 Lic. No. 22875
My license renewal date is December 31, 2024.
Pages or sheets covered by this seal. 1

- = FND CORNER
- = SET 5/8 REROD
- ◻ = FND CONC. MON.
- ⌵ = FD IDOT RAIL
- ⦿ = FD/SET IDOT PI

SEC COR IS NOT "X" TIED		
Corner to be Indexed		
S 1/4 COR		
Sec.	Twp.	Range
34	87	14
Drawn by: JMM		