

WAYNE CLAASSEN ENGINEERING AND SURVEYING, INC.
P.O. BOX 898 WATERLOO, IOWA 50704-0898

PHONE: (VOICE) 319-235-6294
(FAX) 319-235-0028

UNITED STATES PUBLIC LAND SURVEY CORNER CERTIFICATE

Land Survey Monuments situated in Section 34, Township 87 North, Range 14 West, of the Fifth Principal Meridian, Black Hawk County, Iowa.

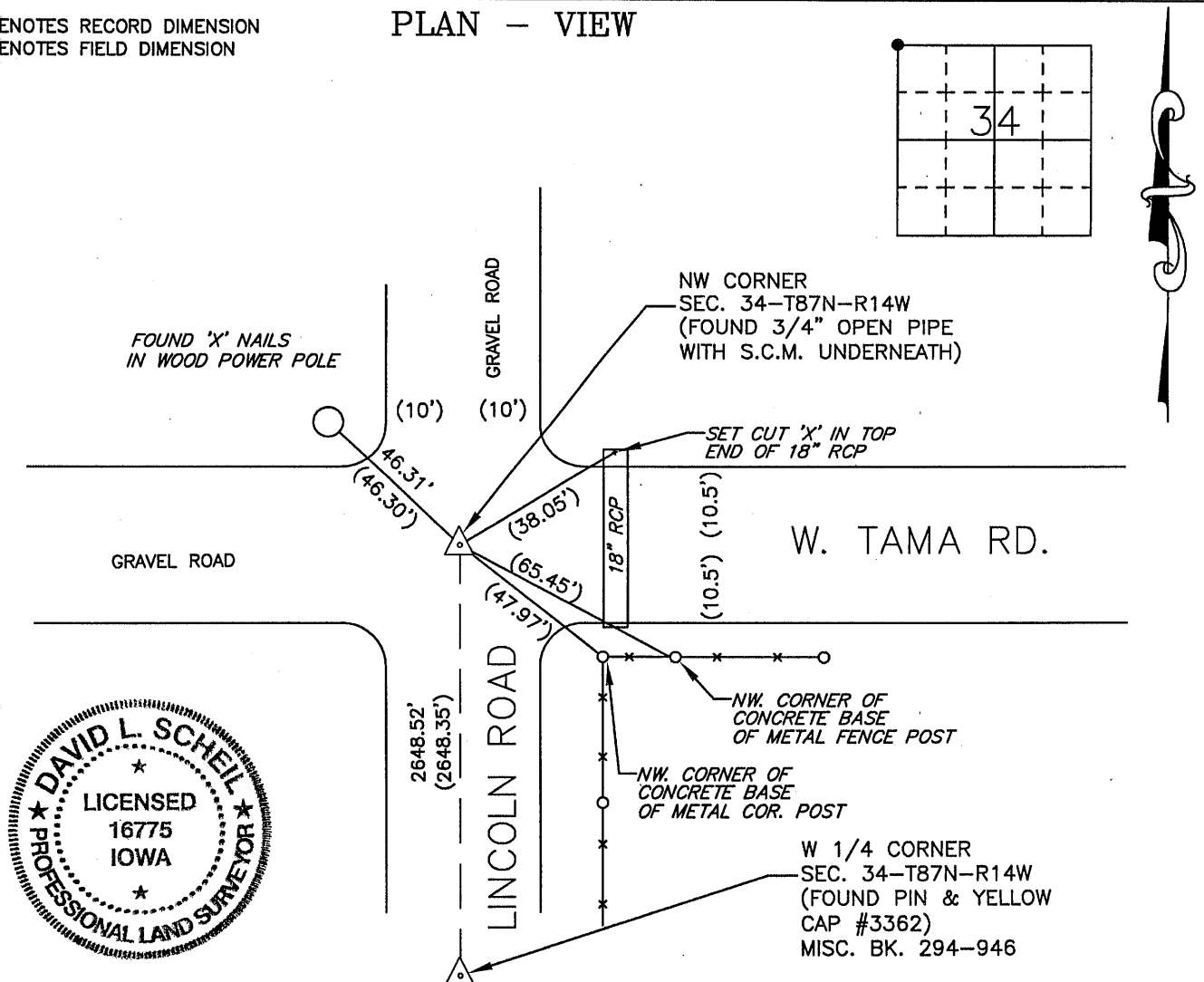
Previously recorded in MISC. BK. 294-948 in County Recorder's Office.
(book, page, document number, etc.)

Monument Description and Remarks

From WPA field notes in the Black Hawk County Engineer's Office, dated Sept. 21, 1938: "found niggerhead 18"x9"x9" and iron bar 3/4"x27" and pine stake 1"x4"x16" C.M. set 3 1/2" East of double. lowered same and set C.M. on top 12" under ground." Robinson Engineering on survey, dated 3-12-1991 "Found gas pipe 1/2" deep". Found 3/4" open pipe and dug below it. Found S.C.M. directly below said 3/4" open pipe. Returned said pipe to original position and retied. This certificate was filed because ties from previous certificate were missing.

000.00 DENOTES RECORD DIMENSION
(000.00) DENOTES FIELD DIMENSION

PLAN - VIEW



720-16

I hereby certify that this land surveying document was prepared and the related survey work was performed by me or under my direct personal supervision and that I am a duly Licensed Land Surveyor under the laws of the State of Iowa.

Signature: David L. Scheil

David L. Scheil, L.S.

Date: SEPT. 12, 2013 Lic. No. 16775

Pages or Sheets Covered by this Seal: THIS SHEET ONLY.

My license renewal date is December 31, 2014

SEAL

List Corners to be Indexed

Corners	Section	Twp	Range
NW CORNER,	34	87 N	14 W
NE CORNER,	33	87 N	14 W
SE CORNER,	28	87 N	14 W
SW CORNER,	27	87 N	14 W

(700)