

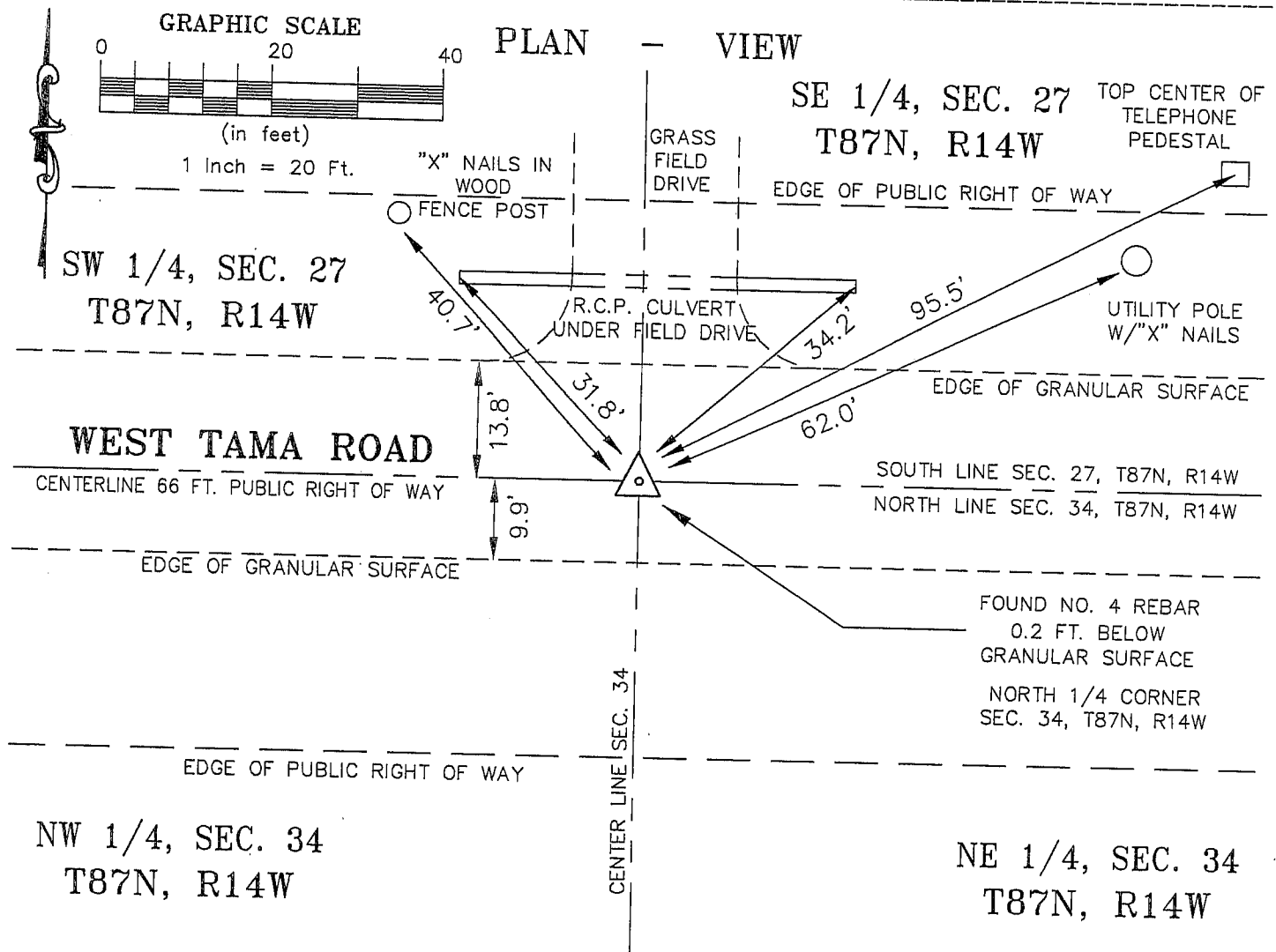
Kirk D. Eschliman, P.L.S. Iowa Lic. No. 9961, 723 Broadway Street, Waterloo, Iowa 50703 - Phone: 319-234-0509

UNITED STATES PUBLIC LAND SURVEY CORNER CERTIFICATE  
OF

LAND SURVEY MONUMENTS SITUATED IN SECTION THIRTY-FOUR (34), TOWNSHIP EIGHTY-SEVEN (87) NORTH  
RANGE FOURTEEN (14) WEST, OF THE FIFTH PRINCIPAL MERIDIAN, BLACK HAWK COUNTY, IOWA.  
PREVIOUSLY RECORDED IN (NOT PREVIOUSLY RECORDED) (BOOK, PAGE, DOCUMENT NUMBER, ETC.) IN THE COUNTY RECORDER'S OFFICE.  
(SHOW REASON FOR PREPARING THIS CERTIFICATE, THE EVIDENCE AND DETAILED PROCEDURES USED IN ESTABLISHING THE CORNER POSITIONS AND MONUMENTATION FOUND OR PLACED.)

## MONUMENT DESCRIPTION AND REMARKS:

CURRENT SECTION CORNER CERTIFICATE NOT ON FILE IN THE BLACK HAWK COUNTY ENGINEER'S OFFICE  
FOUND NUMBER 4 REBAR, 0.2 FEET BELOW GRANULAR SURFACE OF WEST TAMA ROAD. MONUMENT USED  
IN REFERENCED FIELD SURVEY IN THE NORTHEAST CORNER OF SECTION 34.



I HEREBY CERTIFY THAT THIS LAND SURVEYING DOCUMENT  
WAS PREPARED AND RELATED SURVEY WORK WAS  
PERFORMED BY ME OR UNDER MY DIRECT PERSONAL  
SUPERVISION AND THAT I AM A DULY LICENSED LAND  
SURVEYOR UNDER THE LAWS OF THE STATE OF IOWA.

*Kirk D. Eschliman*  
DATE: 07/28/2006  
KIRK D. ESCHLIMAN, P.L.S. IOWA LIC. NO. 9961  
MY LICENSE RENEWAL DATE IS DECEMBER 31, 2007  
PAGES OR SHEETS COVERED BY THIS SIGNATURE & SEAL: SHEET 1 OF 1

FOR: IMMACULATE CONCEPTION CHURCH  
14004 SOUTH HUDSON ROAD  
HUDSON, IOWA 50643

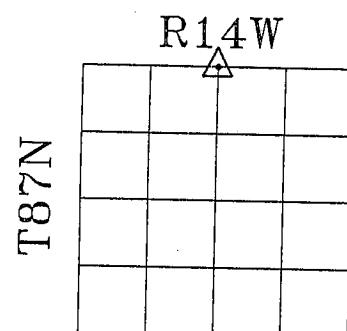
REQ. BY: RENO RODEGHIERO  
HUDSON, IOWA 50643



KESS & ASSOCIATES, INC.  
PROFESSIONAL LAND SURVEYORS: 723 BROADWAY, WATERLOO, IOWA 50703-5811  
DATE: 07/21/2006 C.A.D.D. FILE: 06B42SCC1.DWG PROJECT NO.: 06B42

## List of corners to be indexed:

Corner	Section	Township	Range
N 1/4	34	T87N	R14W



SECTION 34