



Doc ID: 004382680001 Type: GEN  
Kind: CORNER  
Recorded: 01/28/2011 at 02:02:53 PM  
Fee Amt: \$9.00 Page 1 of 1  
Black Hawk County Iowa  
JUDITH A MCCARTHY RECORDER

File 2011-00015344



Jeffrey P. Helland, 1107 Technology Parkway, Cedar Falls, Iowa 50613-6951, (319)-266-0161

## UNITED STATES PUBLIC LAND SURVEY CORNER CERTIFICATE OF

LAND SURVEY MONUMENTS SITUATED IN SECTION NO. 33, TOWNSHIP NO. 87 NORTH, RANGE  
NO. 14 WEST OF THE FIFTH PRINCIPAL MERIDIAN, BLACK HAWK COUNTY, IOWA.  
PREVIOUSLY RECORDED IN N/A

(SHOW REASON FOR PREPARING THIS CERTIFICATE, THE EVIDENCE AND DETAILED PROCEDURES USED IN ESTABLISHING THE  
CORNER POSITIONS AND MONUMENTATION FOUND OR PLACED.)

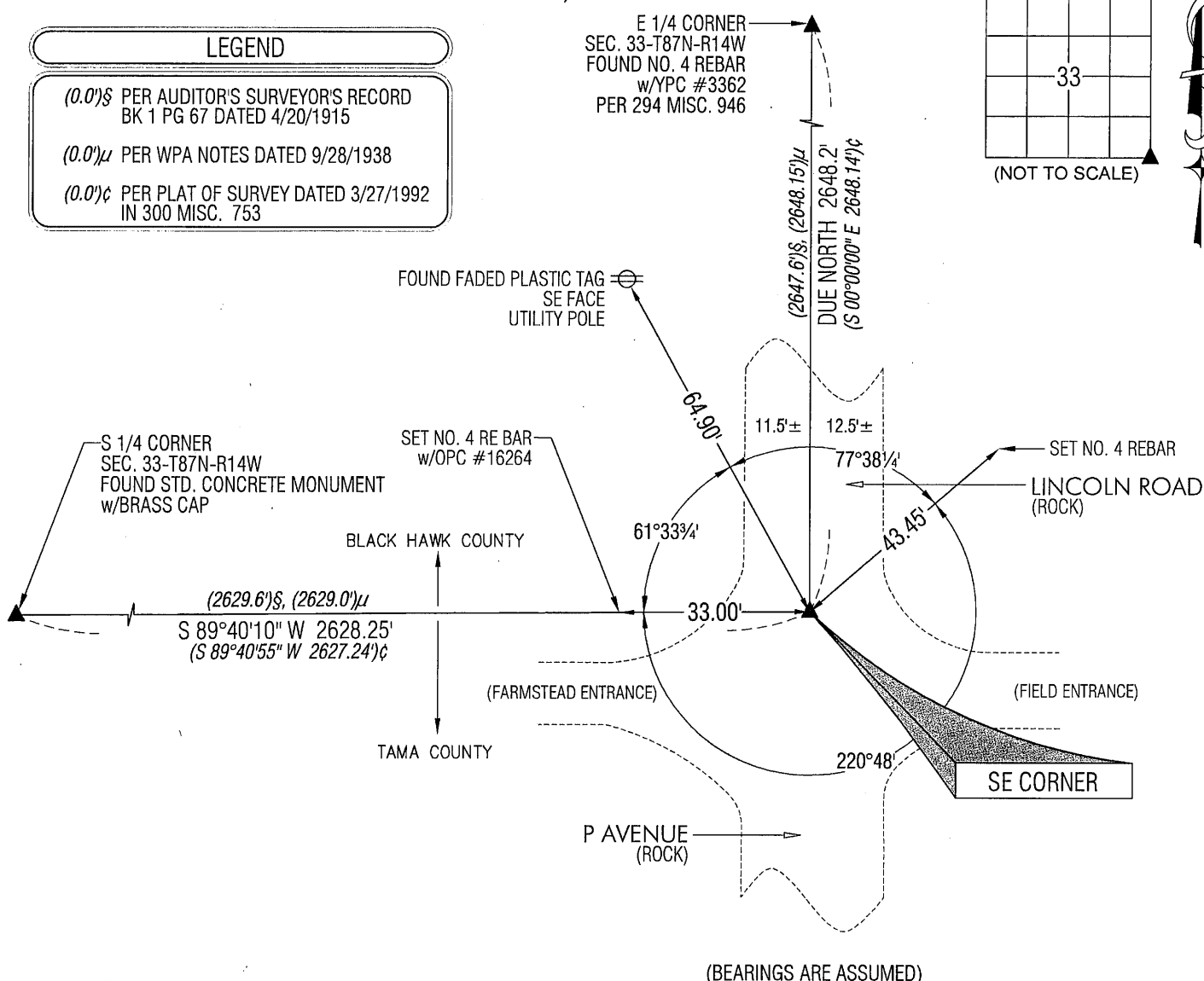
### MONUMENT DESCRIPTION AND REMARKS:

NO USPLSCC ON RECORD. SURVEY COMPLETED IN THE SE 1/4 OF SEC. 33-T87N-R14W.

→ SE CORNER: AUDITOR'S SURVEYOR'S RECORD BOOK 1 (LARGE) PAGE 67 DATED 4/20/1915 STATES CORNER WAS FOUND  
BUT DOES NOT STATE WHAT THE MONUMENT WAS. WPA NOTES DATED 9/28/1938 CALLS FOR [FOUND \*\*\*\*\*HEAD  
15"x12"x6" AND WOODEN STAKE 2"x9 1/2" LOWERED EVIDENCE AND SET C.M. ON TOP 12" UNDERGROUND.] PLAT OF SURVEY  
300 MISC. 753 DATED 3/21/1992 CALLS FOR [SET PIN FROM DISTANCE]. FOUND NO. 4 REBAR w/OPC #6505 (0.2'± DEEP).

### PLAN VIEW

(SHOW A MINIMUM OF THREE REFERENCE TIES TO DURABLE PHYSICAL OBJECTS, RELEVANT MONUMENTS AND PHYSICAL  
CONDITIONS THAT WILL ENABLE RECOVERY OF THE CORNER.)

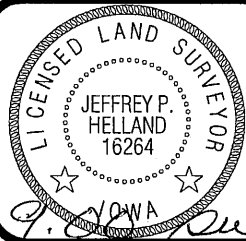


(BEARINGS ARE ASSUMED)



HELLAND ENGINEERING & SURVEYING, LTD.  
1107 Technology Parkway  
Cedar Falls, Iowa 50613-6951  
(319)-266-0161

SHINER = 8D NAIL & 1 5/16"Ø METAL SHINER  
BRASS TAG = 8D NAIL & 13/16"Ø BRASS TAG  
OPC = PLASTIC CAP (O=ORANGE, R=RED, Y=YELLOW)  
(00') RECORDED AS FILE NAME: 11-110C1.DWG



I hereby certify that this land surveying document was prepared  
and the related survey work was performed by me or under my  
direct personal supervision and that I am a duly licensed Land  
Surveyor under the laws of the State of Iowa.  
*Jeffrey P. Helland 1/25/11*  
Jeffrey P. Helland  
License Number 16264  
My license renewal date is December 31, 2011.  
All pages or sheets are covered by this seal except:

LIST CORNERS TO BE INDEXED			
CORNER	SECTION	TOWNSHIP	RANGE
SE CORNER	33	87N	14W
SW CORNER	34	87N	14W

1

Rec.