

Reserved for County Recorder's use

2024-18182

RECORDED: 08/02/2024 11:07:44 AM

RECORDING FEE: \$7.00

REVENUE TAX: \$

COMBINED FEE: \$7.00

SANDIE L. SMITH, RECORDER
BLACK HAWK COUNTY, IOWA

* Kyle J Helland, 6109 Chancellor Drive, Cedar Falls, Iowa 50613-6916, (319)-266-0161

UNITED STATES PUBLIC LAND SURVEY CORNER CERTIFICATE OF

LAND SURVEY MONUMENTS SITUATED IN SECTION NO 33, TOWNSHIP NO 87 NORTH, RANGE
NO 14 WEST OF THE FIFTH PRINCIPAL MERIDIAN, BLACK HAWK COUNTY, IOWA
PREVIOUSLY RECORDED IN #2011-00015345

(SHOW REASON FOR PREPARING THIS CERTIFICATE, THE EVIDENCE AND DETAILED PROCEDURES USED IN ESTABLISHING THE
CORNER POSITIONS AND MONUMENTATION FOUND OR PLACED)

MONUMENT DESCRIPTION AND REMARKS

NO REFERENCE TIES REMAIN SURVEY COMPLETED IN THE NE FRL 1/4 OF SEC 4-T86N-R14W

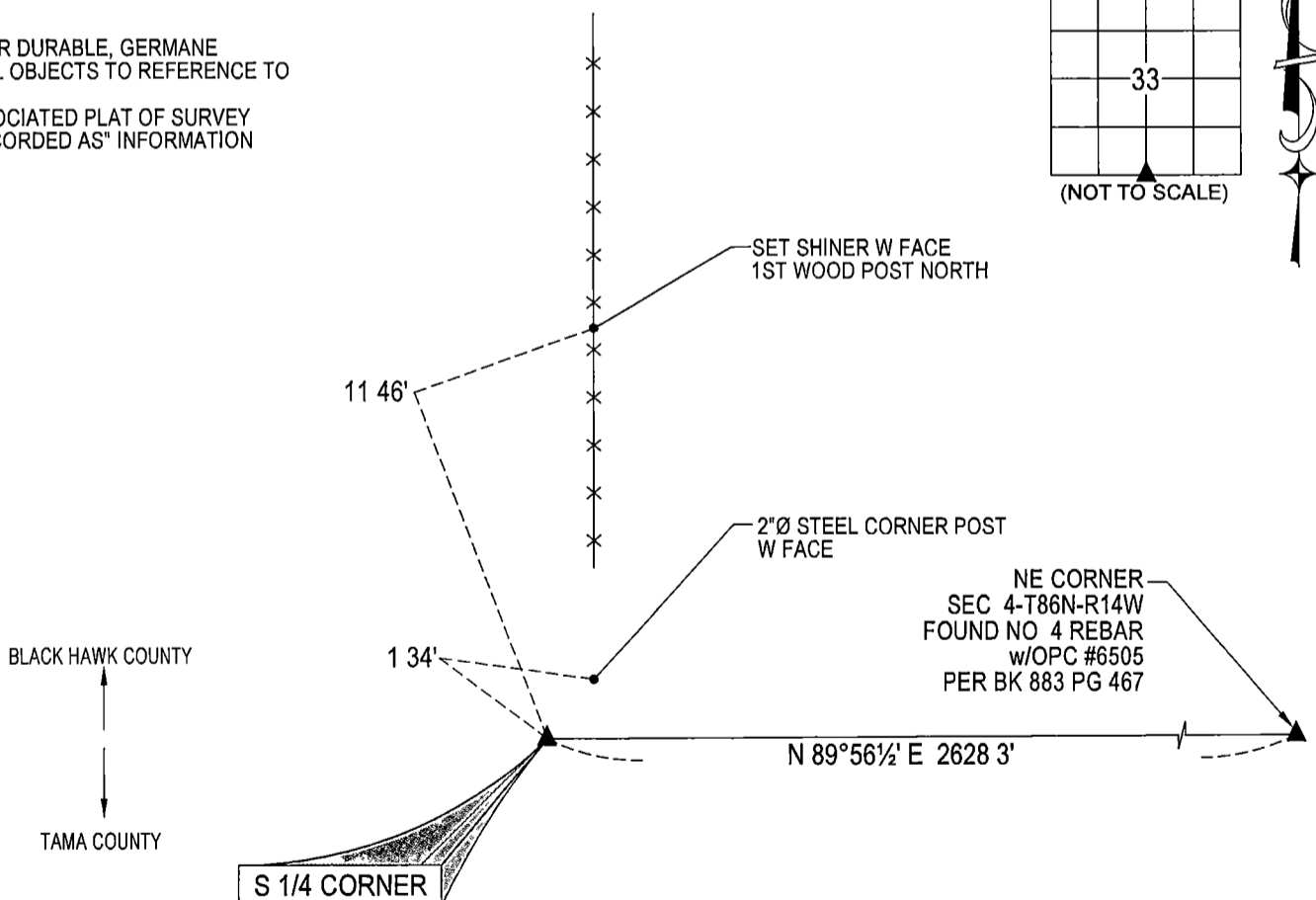
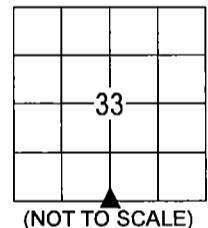
→ **S 1/4 CORNER:** USPSLCC RECORDED IN #2011-00015345 DATED 01/25/2011 CALLS FOR [AUDITOR'S SURVEYOR'S
RECORD BOOK 1 PAGE 615 DATED 4/12/1884 CALLS FOR [STONE & STAKE] AUDITOR'S SURVEYOR'S RECORD BOOK 1
(LARGE) PAGE 67 DATED 4/20/1915 STATES CORNER WAS FOUND BUT DOES NOT STATE WHAT THE MONUMENT WAS
WPA NOTES DATED 9/28/1938 CALLS FOR [FOUND LIMESTONE 17"x13"x10" STONE BROKEN LOWERED EVIDENCE AND
SET C M ON TOP 12" UNDER GROUND] PLAT OF SURVEY 300 MISC 753 DATED 3/21/1992 CALLS FOR [SET PIN AT
CORNER POST] FOUND STANDARD CONCRETE MONUMENT w/BRASS CAP (0 1'± DEEP) ALSO FOUND NO 4 REBAR
1 07' EAST AND 0 60' NORTH (BASED UPON BEARING SHOWN) SET NO 4 REBAR ON NORTH SIDE OF SAID CONCRETE
MONUMENT FOR MAGNETIC DETECTION UTILIZED CONCRETE MONUMENT AS CORNER] SEARCHED AREA WITH
MAGNETIC DETECTOR AND FOUND STANDARD CONCRETE MONUMENT w/BRASS CAP AND NO. 4 REBAR ON NORTH SIDE
FOR MAGNETIC DETECTION FLUSH THEREFOR UTILIZED FOUND STANDARD CONCRETE MONUMENT w/BRASS CAP AS
CORRECT CORNER

PLAN VIEW

(SHOW A MINIMUM OF THREE REFERENCE TIES TO DURABLE PHYSICAL OBJECTS, RELEVANT MONUMENTS AND PHYSICAL
CONDITIONS THAT WILL ENABLE RECOVERY OF THE CORNER)

NO OTHER DURABLE, GERMANE
PHYSICAL OBJECTS TO REFERENCE TO

SEE ASSOCIATED PLAT OF SURVEY
FOR "RECORDED AS" INFORMATION



(BEARINGS ARE ASSUMED)



HELLAND ENGINEERING & SURVEYING, LTD.
6109 Chancellor Drive
Cedar Falls, Iowa 50613-6916
(319)-266-0161

BRASS TAG = 4d NAIL & 13/16" Ø BRASS TAG DRAWN BY CDR
SHINER = 1" Ø STEEL SHINER w/MASONRY NAIL
OPC = PLASTIC CAP (O=ORANGE, R=RED, Y=YELLOW)
(00') RECORDED AS FILE NAME 24-183-24 DWG



I hereby certify that this land surveying document was prepared
and the related survey work was performed by me or under my
direct, personal supervision and that I am a duly licensed
Professional Land Surveyor under the laws of the State of Iowa.
Kyle J Helland 07/16/2024
Kyle J Helland
License Number 23212
My license renewal date is December 31, 2025
All pages or sheets are covered by this seal except

LIST CORNERS TO BE INDEXED

CORNER	SECTION / TOWNSHIP / RANGE
S 1/4 CORNER	33 87N 14W