

Jeffrey P. Helland, 1107 Technology Parkway, Cedar Falls, Iowa 50613-6951, (319)-266-0161

UNITED STATES PUBLIC LAND SURVEY CORNER CERTIFICATE OF

LAND SURVEY MONUMENTS SITUATED IN SECTION NO. 33, TOWNSHIP NO. 87 NORTH, RANGE
NO. 14 WEST OF THE FIFTH PRINCIPAL MERIDIAN, BLACK HAWK COUNTY, IOWA.
PREVIOUSLY RECORDED IN N/A.

(SHOW REASON FOR PREPARING THIS CERTIFICATE, THE EVIDENCE AND DETAILED PROCEDURES USED IN ESTABLISHING THE
CORNER POSITIONS AND MONUMENTATION FOUND OR PLACED.)

MONUMENT DESCRIPTION AND REMARKS:

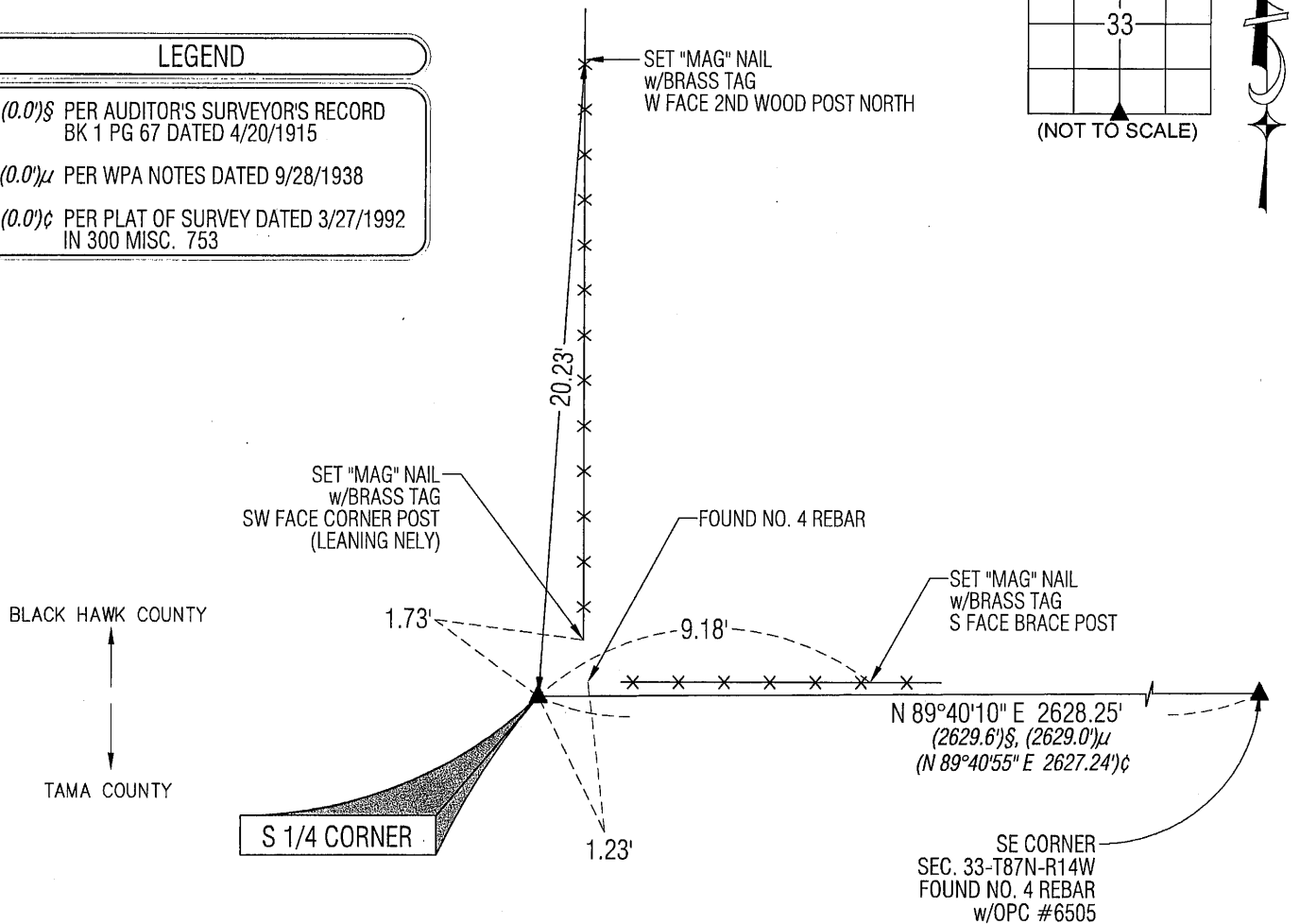
NO USPLSCC ON RECORD. SURVEY COMPLETED IN THE SE 1/4 OF SEC. 33-T87N-R14W.

→ S 1/4 CORNER: AUDITOR'S SURVEYOR'S RECORD BOOK 1 PAGE 615 DATED 4/12/1884 CALLS FOR [STONE & STAKE].
AUDITOR'S SURVEYOR'S RECORD BOOK 1 (LARGE) PAGE 67 DATED 4/20/1915 STATES CORNER WAS FOUND BUT DOES NOT
STATE WHAT THE MONUMENT WAS. WPA NOTES DATED 9/28/1938 CALLS FOR [FOUND LIMESTONE 17"x13"x10" STONE
BROKEN LOWERED EVIDENCE AND SET C.M. ON TOP 12" UNDER GROUND.] PLAT OF SURVEY 300 MISC. 753 DATED
3/21/1992 CALLS FOR [SET PIN AT CORNER POST]. FOUND STANDARD CONCRETE MONUMENT w/BRASS CAP (0.1'± DEEP).
ALSO FOUND NO. 4 REBAR 1.07' EAST AND 0.60' NORTH (BASED UPON BEARING SHOWN). SET NO. 4 REBAR ON NORTH SIDE
OF SAID CONCRETE MONUMENT FOR MAGNETIC DETECTION. UTILIZED CONCRETE MONUMENT AS CORNER.

PLAN VIEW

(SHOW A MINIMUM OF THREE REFERENCE TIES TO DURABLE PHYSICAL OBJECTS, RELEVANT MONUMENTS AND PHYSICAL
CONDITIONS THAT WILL ENABLE RECOVERY OF THE CORNER.)

LEGEND
(0.0')§ PER AUDITOR'S SURVEYOR'S RECORD BK 1 PG 67 DATED 4/20/1915
(0.0')μ PER WPA NOTES DATED 9/28/1938
(0.0')¢ PER PLAT OF SURVEY DATED 3/27/1992 IN 300 MISC. 753



(BEARINGS ARE ASSUMED)



HELLAND ENGINEERING & SURVEYING, LTD.
1107 Technology Parkway
Cedar Falls, Iowa 50613-6951
(319)-266-0161

SHINER = 8D NAIL & 1 5/16"Ø METAL SHINER
BRASS TAG = 8D NAIL & 13/16"Ø BRASS TAG
OPC = PLASTIC CAP (O=ORANGE, R=RED, Y=YELLOW)
(00') RECORDED AS FILE NAME: 11-110C2.DWG



I hereby certify that this land surveying document was prepared
and the related survey work was performed by me or under my
direct personal supervision and that I am a duly licensed Land
Surveyor under the laws of the State of Iowa.

Jeffrey P. Helland 1/25/11
Jeffrey P. Helland
License Number 16264
My license renewal date is December 31, 2011.
All pages or sheets are covered by this seal except:

LIST CORNERS TO BE INDEXED

CORNER	SECTION	TOWNSHIP	RANGE
S 1/4 CORNER	33	87N	14W