

INDEX

BLACK HAWK COUNTY, IOWA:ss

FEE BOOK # 2005 06426

PROOF

FILED FOR RECORD SEP 9 2004 AT 10:00 A.M. FEE 1-5.00-1.00X

COMPARED

Jeffrey P. Helland

BLACK HAWK COUNTY RECORDER

PAUL HELLAND

Jeffrey P. Helland, 1107 Technology Parkway, Cedar Falls, Iowa 50613-6951, (319)-266-0161

UNITED STATES PUBLIC LAND SURVEY CORNER CERTIFICATE
OFLAND SURVEY MONUMENTS SITUATED IN SECTION NO. 31, TOWNSHIP NO. 87 NORTH, RANGE
NO. 14 WEST OF THE FIFTH PRINCIPAL MERIDIAN, BLACK HAWK COUNTY, IOWA.

PREVIOUSLY RECORDED IN BOOK _____, PAGE _____.

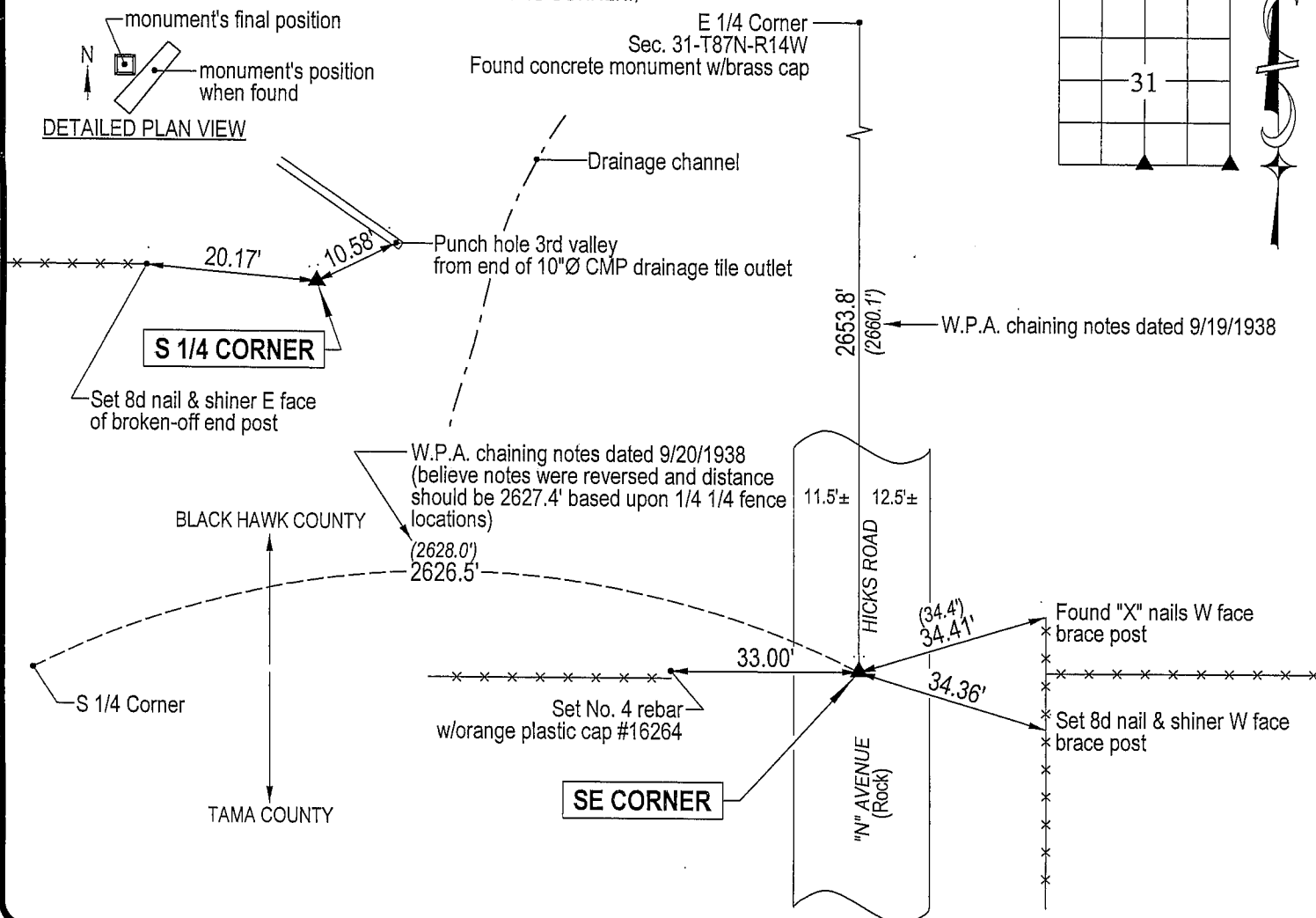
(SHOW REASON FOR PREPARING THIS CERTIFICATE, THE EVIDENCE AND DETAILED PROCEDURES USED IN ESTABLISHING THE
CORNER POSITIONS AND MONUMENTATION FOUND OR PLACED.)

MONUMENT DESCRIPTION AND REMARKS:

No corner certificates on file. Survey completed in the SE 1/4 of Sec. 31-T87N-R14W.

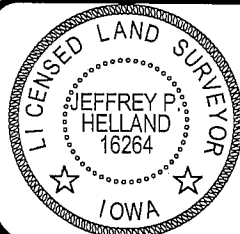
- SE CORNER: Black Hawk County Engineer reference ties dated 10/6/1938 calls for (concrete monument w/brass cap). All reference ties obliterated. Of additional Black Hawk County Engineer reference ties (no date), one tie remains: Brace post to the NE. Found $\frac{3}{4}$ " \emptyset x 1' long iron pin, continued excavation and found concrete monument w/brass cap 1.4' deep. Replaced $\frac{3}{4}$ " \emptyset x 1' long iron pin above said concrete monument.
- S 1/4 CORNER: Black Hawk County Engineer reference ties dated 9/20/1938 calls for (concrete monument w/brass cap). All reference ties obliterated. Started excavation using W.P.A. chaining distance from SE corner. Excavated 4' \emptyset \pm hole x 3.5' deep. Found broken-off base (0.37" x 0.47" x 1.9") of concrete monument on it's side. Suspect monument disturbed during installation of drainage tile in vicinity or during drainage ditch construction. Replaced monument in position believed to be the original position. Drilled $\frac{1}{4}$ " \emptyset hole in top center of monument and set "mag" nail. Set No. 4 rebar on North side for magnetic detection. Top of monument is 0.5' deep.

PLAN VIEW

(SHOW A MINIMUM OF THREE REFERENCE TIES TO DURABLE PHYSICAL OBJECTS, RELEVANT MONUMENTS AND PHYSICAL
CONDITIONS THAT WILL ENABLE RECOVERY OF THE CORNER.)HELLAND ENGINEERING & SURVEYING, LTD.
1107 Technology Parkway
Cedar Falls, Iowa 50613-6951
(319)-266-0161

(00.00') - Per Black Hawk County Engineer ties

File Name: 04-287c2.drg

I hereby certify that this land surveying document was prepared
and the related survey work was performed by me or under my
direct personal supervision and that I am a duly licensed Land
Surveyor under the laws of the State of Iowa.*Jeffrey P. Helland* 8/26/04
Jeffrey P. Helland
License Number 16264
My license renewal date is December 31, 2005.
All pages or sheets are covered by this seal except:

LIST CORNERS TO BE INDEXED

CORNER	SECTION	TOWNSHIP	RANGE
SE CORNER	31	87N	14W
S 1/4 CORNER	31	87N	14W

Rec.