



File **2023-00004911**

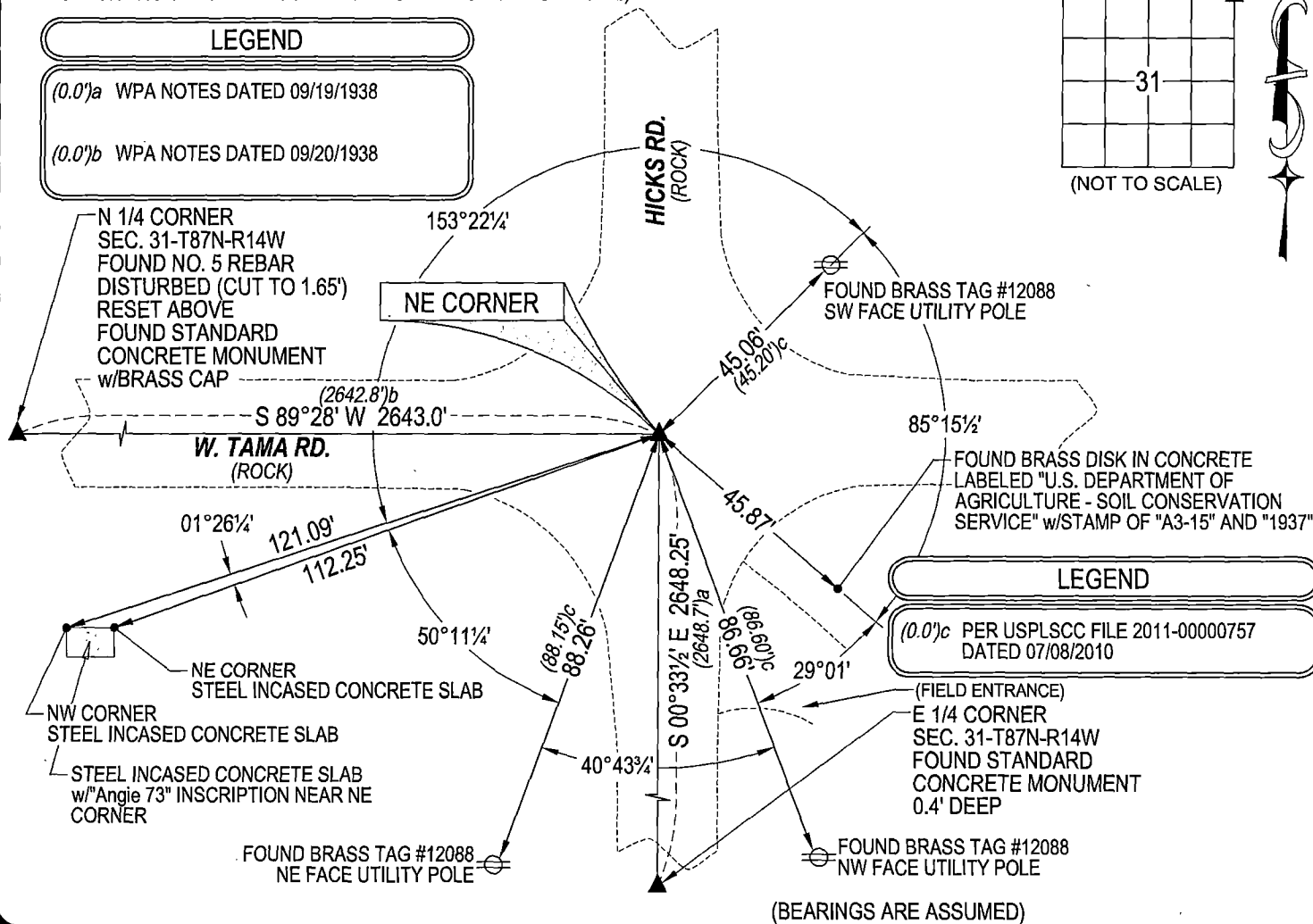
✶ Jeffrey P. Helland, 6109 Chancellor Drive, Cedar Falls, Iowa 50613-6916, (319)-266-0161

LAND SURVEY MONUMENTS SITUATED IN SECTION NO. 31, TOWNSHIP NO. 87 NORTH, RANGE  
NO. 14 WEST OF THE FIFTH PRINCIPAL MERIDIAN, BLACK HAWK COUNTY, IOWA.  
PREVIOUSLY RECORDED IN FILE 2011-00000757

MONUMENTATION HAS CHANGED. SURVEY COMPLETED IN THE NE 1/4 OF SEC. 31-T87N-R14W.

### PLAN VIEW

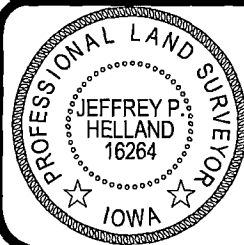
LEGEND	
(0.0')a	WPA NOTES DATED 09/19/1938
(0.0')b	WPA NOTES DATED 09/20/1938



(BEARINGS ARE ASSUMED)



SHINER = 4d. NAIL & 1/5/16"Ø METAL SHINER    DRAWN BY: JPH  
BRASS TAG = 4d. NAIL & 13/16"Ø BRASS TAG  
OPC = PLASTIC CAP (O=ORANGE, R=RED, Y=YELLOW)  
(00') RECORDED AS                      FILE NAME: 22-228-21.DWG



I hereby certify that this land surveying document was prepared and the related survey work was performed by me or under my direct personal supervision and that I am a duly licensed Professional Land Surveyor under the laws of the State of Iowa.

*Jeffrey V. Helland* 9/19/2022  
Jeffrey V. Helland  
License Number 16264  
My license renewal date is December 31, 2023.  
All pages or sheets are covered by this seal except:

LIST CORNERS TO BE INDEXED			
CORNER	SECTION	TOWNSHIP	RANGE
NE CORNER	31	87N	14W
SE CORNER	30	87N	14W
SW CORNER	29	87N	14W
NW CORNER	32	87N	14W