

Reserved for County Recorder's use.

Doc ID: 011836250001 Type: GEN
Recorded: 09/21/2022 at 11:20:48 AM
Fee Amt: \$7.00 Page 1 of 1
Black Hawk County Iowa
SANDIE L. SMITH RECORDER
File **2023-00004912**

Jeffrey P. Helland, 6109 Chancellor Drive, Cedar Falls, Iowa 50613-6916, (319)-266-0161

UNITED STATES PUBLIC LAND SURVEY CORNER CERTIFICATE
OF

LAND SURVEY MONUMENTS SITUATED IN SECTION NO. 31, TOWNSHIP NO. 87 NORTH, RANGE
NO. 14 WEST OF THE FIFTH PRINCIPAL MERIDIAN, BLACK HAWK COUNTY, IOWA.
PREVIOUSLY RECORDED IN N/A

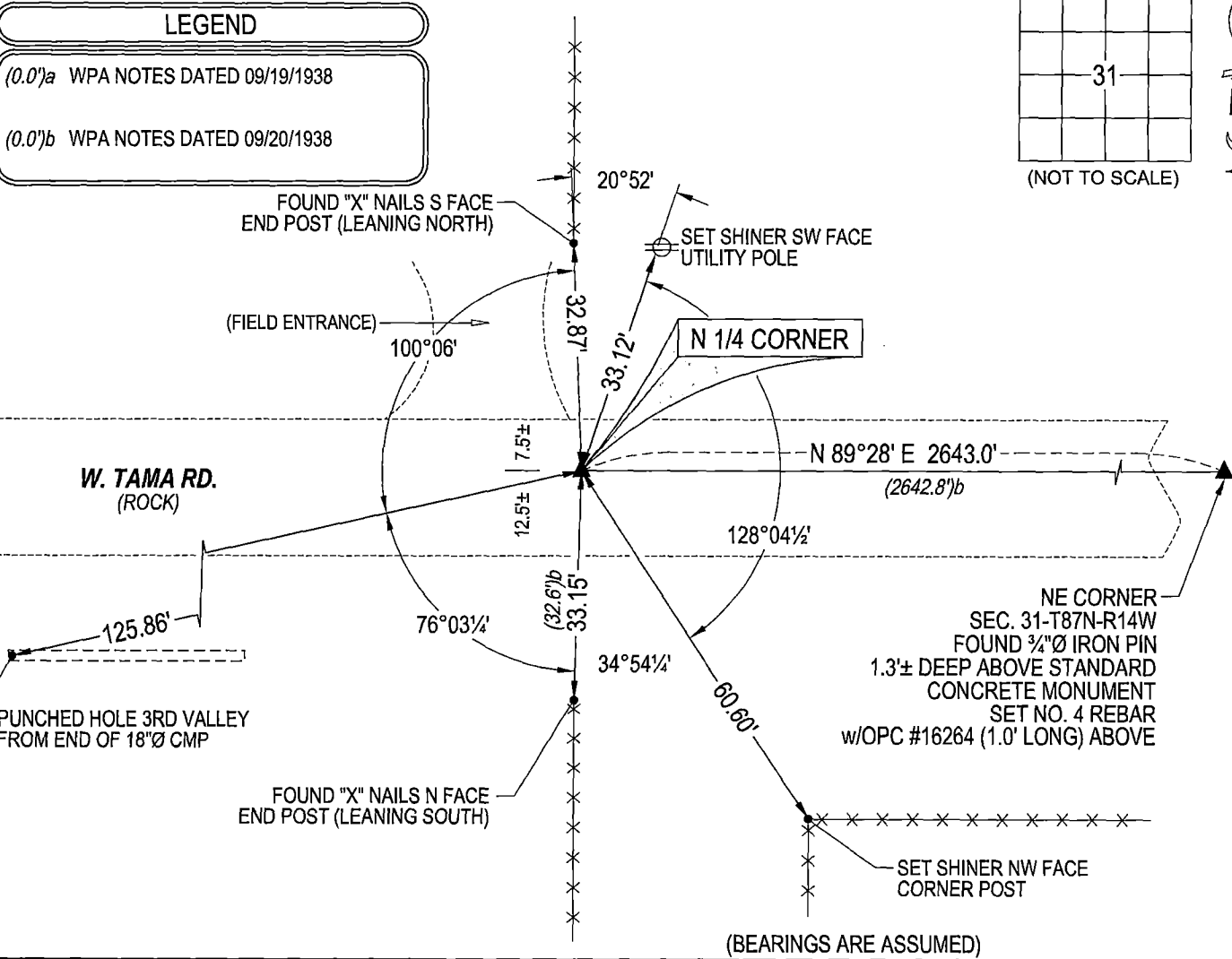
(SHOW REASON FOR PREPARING THIS CERTIFICATE, THE EVIDENCE AND DETAILED PROCEDURES USED IN ESTABLISHING THE
CORNER POSITIONS AND MONUMENTATION FOUND OR PLACED.)

MONUMENT DESCRIPTION AND REMARKS:
NO USPLSCC ON FILE. SURVEY COMPLETED IN THE NE 1/4 OF SEC. 31-T87N-R14W.

N 1/4 CORNER: WPA NOTES DATED 09/20/1938 CALL FOR [FOUND N***ER HEAD 4"x9"x14" STONE WAS LAYING FLAT
LOWERED STONE AND SET C.M. ON TOP 12" BELOW GROUND.]. SEARCHED AREA, EXCAVATED, AND FOUND NO. 5
REBAR (26 1/4" LONG) WITH TOP 3"± BENT WESTERLY. CONTINUED EXCAVATION AND FOUND STANDARD CONCRETE
MONUMENT w/BRASS CAP 2.0± DEEP. CUT SAID FOUND NO. 5 REBAR TO 1.65' LONG AND SET ABOVE SAID FOUND
STANDARD CONCRETE MONUMENT AT A DEPTH OF 0.35±. UTILIZED SAID NO. 5 REBAR AS CORNER.

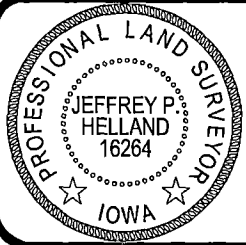
PLAN VIEW

(SHOW A MINIMUM OF THREE REFERENCE TIES TO DURABLE PHYSICAL OBJECTS, RELEVANT MONUMENTS AND PHYSICAL
CONDITIONS THAT WILL ENABLE RECOVERY OF THE CORNER.)



HELLAND ENGINEERING & SURVEYING, LTD.
6109 Chancellor Drive
Cedar Falls, Iowa 50613-6916
(319)-266-0161

SHINER = 4d. NAIL & 1 5/16"Ø METAL SHINER
BRASS TAG = 4d. NAIL & 13/16"Ø BRASS TAG
OPC = PLASTIC CAP (O=ORANGE, R=RED, Y=YELLOW)
(00') RECORDED AS FILE NAME: 22-228-28.DWG



I hereby certify that this land surveying document was prepared
and the related survey work was performed by me or under my
direct personal supervision and that I am a duly licensed
Professional Land Surveyor under the laws of the State of Iowa.
Jeffrey P. Helland
License Number 16264
My license renewal date is December 31, 2023.
All pages or sheets are covered by this seal except:

LIST CORNERS TO BE INDEXED			
CORNER	SECTION	TOWNSHIP	RANGE
N 1/4 CORNER	31	87N	14W
S 1/4 CORNER	30	87N	14W